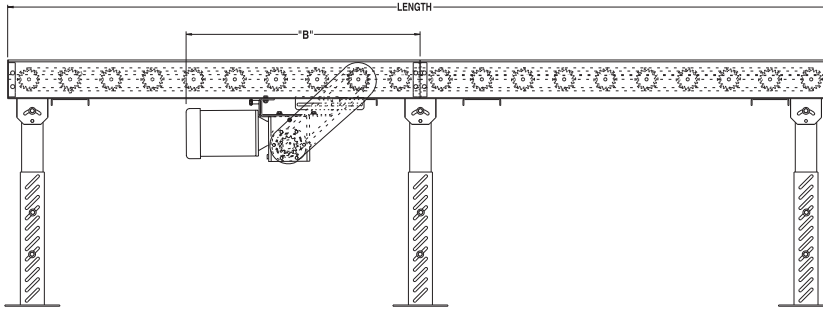
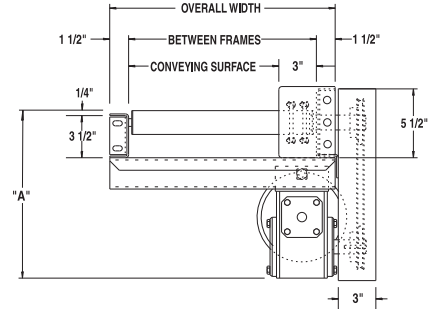


# MODEL 192CDLR MEDIUM DUTY ROLL-TO-ROLL CHAIN DRIVEN LIVE ROLLER



Conveyor shown with optional supports

Roach model 192CDLR is a medium duty chain driven live roller conveyor. This conveyor is designed to transport loads such as tote pans, castings, drums or pallet loads.



| HP @ 45FPM | "A"     | "B" MAX  |
|------------|---------|----------|
| 1/3        | 13-1/8" | 49-1/2"  |
| 1/2        | 13-1/8" | 49-1/2"  |
| 3/4        | 13-1/2" | 49-1/2"  |
| 1          | 13-3/4" | 50-1/16" |
| 1-1/2      | 14-5/8" | 50-3/8"  |
| 2          | 15-1/2" | 52-1/16" |

## SPECIFICATIONS

**TREAD ROLLERS:** 1.9" dia. x 12 ga. steel, model 192S with sprockets.

**CHAIN DRIVE:** Roll-to-roll no. 40 roller chain.

**CENTER DRIVE:** Reversible drive either side mounted or underside mounted (specify). Main drive roller is supported by precision, heavy duty, lubricated, ball bearing units.

**CHAIN GUARD:** The chain drive is completely enclosed along the entire length of the conveyor.

**ROLLER CENTERS:** 4", 6", 8" or 12" centers available.

**SPEED:** 45 FPM, constant.

**BEARINGS:** Removable type, zinc-plated, grease packed, labyrinth sealed.

**BED:** 5-1/2" x 1-1/2" x 10 ga. and 3-1/2" x 1-1/2" x 10 ga. formed steel channel frame.

**MOTOR DRIVE:** 1/3 HP, 230/460/3, 60 cycle, ODP right angle gear motor.

**ELECTRICAL CONTROLS:** Optional.

## SPECIFICATION TABLE

■ 24 hour shipment

| UNIT WEIGHTS (FOR 4" AND 8" ROLLER CENTERS ONLY) |     |       |       |       |       |       |       |       |       |       |       |       |       |       |       |       |       |       |       |  |
|--|-----|-------|-------|-------|-------|-------|-------|-------|-------|-------|-------|-------|-------|-------|-------|-------|-------|-------|-------|--|
| CONVEYOR LENGTH                                  |     | 5'    |       | 10'   |       | 20'   |       | 30'   |       | 40'   |       | 50'   |       | 60'   |       | 70'   |       | 80'   |       |  |
| CONV. SURFACE                                    | BF  | 4" RC | 8" RC | 4" RC | 8" RC | 4" RC | 8" RC | 4" RC | 8" RC | 4" RC | 8" RC | 4" RC | 8" RC | 4" RC | 8" RC | 4" RC | 8" RC | 4" RC | 8" RC |  |
| 12"  | 15" | 334   | 291   | 509   | 431   | 859   | 703   | 1209  | 948   | 1659  | 1247  | 1909  | 1519  | 1790  | 2065  | 2340  |       |       |       |  |
| 18"  | 21" | 372   | 319   | 572   | 474   | 969   | 773   | 1367  | 1073  | 1764  | 1372  | 2161  | 1671  | 1971  | 2276  | 2581  |       |       |       |  |
| 24"  | 27" | 409   | 351   | 634   | 516   | 1079  | 843   | 1524  | 1170  | 1969  | 1497  | 2414  | 1824  | 2251  | 2476  | 2801  |       |       |       |  |
| 30"  | 33" | 452   | 379   | 697   | 559   | 1190  | 914   | 1683  | 1269  | 2175  | 1623  | 2668  | 1978  | 2333  | 2688  | 3043  |       |       |       |  |
| 36"  | 39" | 469   | 406   | 739   | 600   | 1278  | 950   | 1817  | 1340  | 2356  | 1720  | 2895  | 2100  | 2480  | 2865  | 3250  |       |       |       |  |
| 42"  | 45" | 524   | 430   | 819   | 640   | 1407  | 1049  | 1994  | 1457  | 2581  | 1865  | 3169  | 2274  | 2684  | 3099  | 3514  |       |       |       |  |
| 48"  | 51" | 562   | 463   | 882   | 683   | 1517  | 1119  | 2152  | 1555  | 2788  | 1992  | 3423  | 2428  | 2864  | 3299  | 3734  |       |       |       |  |

| UNIT WEIGHTS (FOR 6" AND 12" ROLLER CENTERS ONLY) |     |       |        |       |        |       |        |       |        |       |        |       |        |       |        |       |        |       |        |
|---|-----|-------|--------|-------|--------|-------|--------|-------|--------|-------|--------|-------|--------|-------|--------|-------|--------|-------|--------|
| CONVEYOR LENGTH                                   |     | 5'    |        | 10'   |        | 20'   |        | 30'   |        | 40'   |        | 50'   |        | 60'   |        | 70'   |        | 80'   |        |
| CONV. SURFACE                                     | BF  | 6" RC | 12" RC | 6" RC | 12" RC | 6" RC | 12" RC | 6" RC | 12" RC | 6" RC | 12" RC | 6" RC | 12" RC | 6" RC | 12" RC | 6" RC | 12" RC | 6" RC | 12" RC |
| 12"   | 15" | 307   | 285    | 457   | 405    | 755   | 651    | 1053  | 897    | 1351  | 1143   | 1647  | 1389   | 1946  | 1634   | 2246  | 1884   | 2546  | 2134   |
| 18"   | 21" | 341   | 301    | 506   | 441    | 837   | 707    | 1169  | 974    | 1500  | 1240   | 1831  | 1506   | 2163  | 1773   | 2493  | 2043   | 2823  | 2313   |
| 24"   | 27" | 370   | 331    | 555   | 476    | 921   | 763    | 1287  | 1050   | 1653  | 1337   | 2019  | 1624   | 2385  | 1911   | 2755  | 2201   | 3125  | 2491   |
| 30"   | 33" | 405   | 358    | 605   | 513    | 1006  | 822    | 1407  | 1131   | 1807  | 1439   | 2208  | 1748   | 2609  | 2057   | 3009  | 2367   | 3409  | 2677   |
| 36"   | 39" | 418   | 363    | 633   | 528    | 1066  | 856    | 1499  | 1184   | 1932  | 1512   | 2365  | 1840   | 2798  | 2168   | 3228  | 2498   | 3658  | 2828   |
| 42"   | 45" | 465   | 406    | 700   | 581    | 1169  | 931    | 1637  | 1280   | 2105  | 1629   | 2574  | 1979   | 3044  | 2330   | 3514  | 2680   | 3984  | 3030   |
| 48"   | 51" | 499   | 432    | 749   | 617    | 1251  | 987    | 1753  | 1357   | 2256  | 1728   | 2753  | 2090   | 3260  | 2468   | 3760  | 2838   | 4260  | 3208   |

## OPTIONAL EQUIPMENT

**SPEED:** Constant speed 1.5-100 FPM; DC variable speed; AC inverter variable speed. Other constant or variable speeds available. **NOTE: CAPACITY CHANGES WITH SPEED. 100 FPM MAX. WITH ROLL-TO-ROLL CHAIN DRIVE.**

**MOTORS:** Available through 3 HP in TEFC, explosion proof, dirty duty, brake motor, 115/230/1, 575/3, etc.

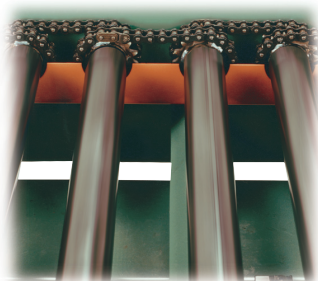
**FLOOR SUPPORTS:** Supports, knee braces, casters and polytier supports available. See Conveyor Accessories.

**UNDERTRUSSED BED:** Available to provide clearance underneath unit at bed joint locations. Specify location for undertrussing and desired clearance underneath unit. Consult factory.

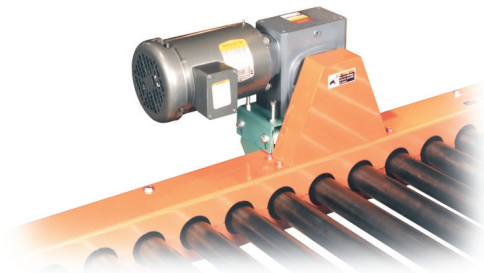
**GUARD RAILS:** 1-3/4" x 1" formed channel (model GC), adjusts horizontally to 8" wider than roller and vertically to 6" above roller; formed steel fixed (model FSG in 2", 4" and 6" heights; fixed channel (model FC); 1-1/2" angle (model GA1-1/2). See Conveyor Accessories.

**CEILING HANGERS:** 5/8" dia. threaded rod with hardware to attach rods to conveyor. Provides 6' clearance between ceiling and TOR (furnished in place of floor supports). See Conveyor Accessories.

**ELECTRICAL CONTROLS:** Magnetic starter; one direction manual starter; momentary start/stop push button station; limit switch, photo relay; others available.



ROLLER TO ROLLER CHAIN DRIVE  
(guard removed for clarity)



OPTIONAL TOP ROLLER GUARD MOUNTED DRIVE

