

MODEL 192CDLRC MEDIUM DUTY CHAIN DRIVEN LIVE ROLLER CURVE



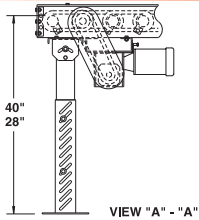
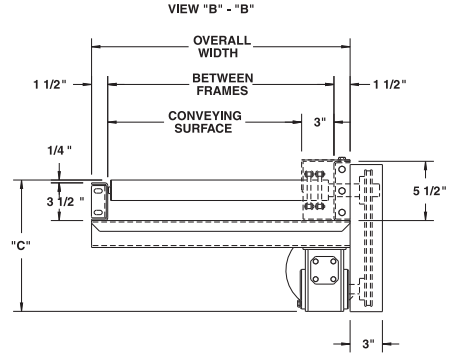
Conveyor shown with optional supports

Roach 192CDLRC is a medium duty chain driven live roller curve, designed to transport medium duty loads such as castings or drums. **NOTE:** When conveying medium duty pallet loads, use model 254TCDLRC, opposite page, to maintain product orientation.

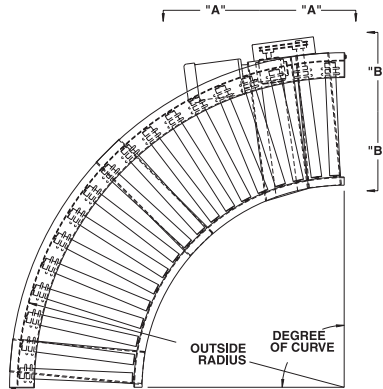
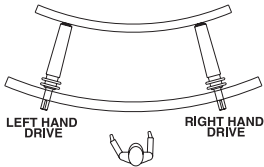
SPECIFY MODEL NUMBER PER EXAMPLE

192CDLRC-27-45-L

192CDLRC-(between frames)-(degree)-(left or right)



DETERMINING DRIVE LOCATION



| UNIT | | 90° | | 45° | | |
|------|---------------|----------------|------------|-----------|------------|------------|
| BF | CONV. SURFACE | OUTSIDE RADIUS | QTY. RLRS. | WT (lbs.) | QTY. RLRS. | WT. (lbs.) |
| 15" | 12" | 4'-10-3/4" | 18 | 339 | 9 | 265 |
| 21" | 18" | 4'-10-3/4" | 18 | 374 | 9 | 277 |
| 27" | 24" | 4'-10-3/4" | 18 | 409 | 9 | 292 |
| 33" | 30" | 8'-15/16" | 30 | 543 | 15 | 313 |
| 39" | 36" | 8'-15/16" | 30 | 586 | 15 | 337 |
| 45" | 42" | 8'-15/16" | 30 | 633 | 15 | 364 |
| 51" | 48" | 8'-15/16" | 30 | 681 | 15 | 391 |

CHAIN DRIVEN LIVE ROLLERS

SPECIFICATIONS

TREAD ROLLERS: 1.9" dia. x 12 ga. steel, model 192S with sprockets.*

CHAIN DRIVE: Roller to roller with No. 40 circular roller chain.

END DRIVE: Reversible drive either side mounted or underside (specify). Main drive roller is supported by precision, heavy duty, lubricated, ball bearing units.

CHAIN GUARD: Chain drive is enclosed, top and bottom, along entire length of conveyor.

BED: 5-1/2" x 1-1/2" x 10 ga. and 3-1/2" x 1-1/2" x 10 ga. formed steel channel frame.

BEARINGS: Removable type, heavy duty bearings, zinc plated, grease packed, labyrinth sealed.

MOTOR DRIVE: 1/3 HP, 230/460/3, 60 cycle, ODP right angle gear motor.

SPEED: 45 FPM, constant.

DRIVE LOCATION: Drive located on outside of curve. Specify right hand drive or left hand drive (drive hand determined with reference point located at outside of curve).

ROLLER CENTERS: 5" RC measured at outside radius of curve.

ELECTRICAL CONTROLS: Optional.

| HP @ 45FPM | "C" |
|------------|---------|
| 1/3, 1/2 | 13-1/8" |
| 3/4 | 13-1/2" |
| 1 | 13-3/4" |
| 1-1/2 | 14-5/8" |
| 2 | 15-1/2" |

OPTIONAL EQUIPMENT

SPEED: Constant speed 1.5-60 FPM; DC variable speed; AC inverter variable speed. Other constant or variable speeds available.
NOTE: CAPACITY CHANGES WITH SPEED. 100 FPM MAX. WITH ROLLER-TO-ROLLER CHAIN DRIVE.

MOTORS: Available through 3 HP in TEFC, explosion proof, dirty duty, 115/230/1, 575/3, etc.

FLOOR SUPPORTS: Supports, knee braces, casters, ceiling hangers and polytier supports available. See Conveyor Accessories.

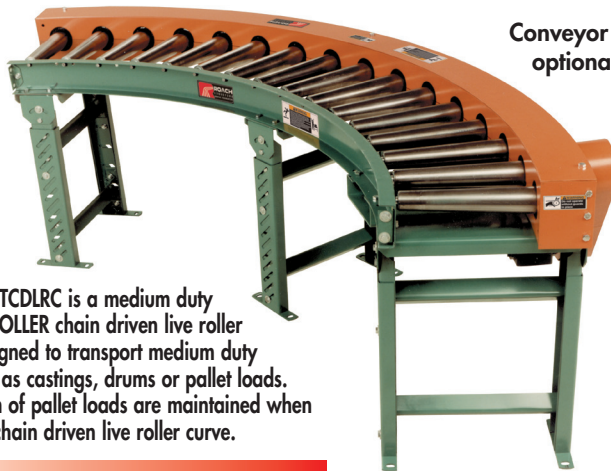
ELECTRICAL CONTROLS: Magnetic or manual starter; limit switch; others available.

*NOTE: Orientation of product may be affected because of straight rollers in curve. To maintain orientation, use tapered roller curve.

■ 4 week shipment



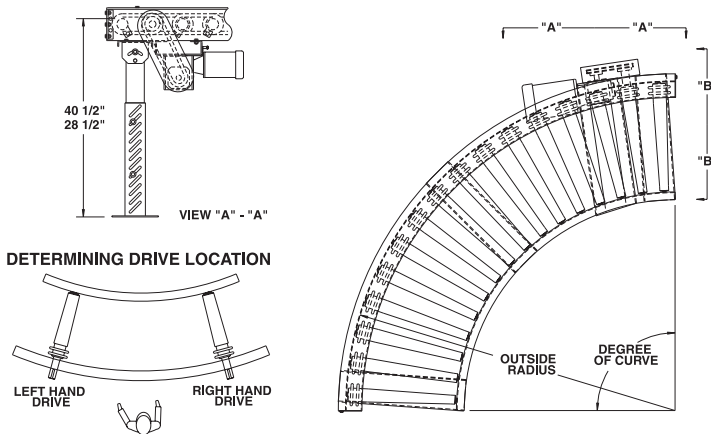
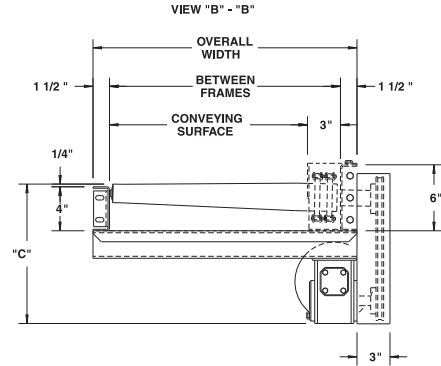
MODEL 254TCDLRC MEDIUM DUTY TAPERED ROLLER CHAIN DRIVEN LIVE ROLLER CURVE



Conveyor shown with optional supports

Model 254TCDLRC is a medium duty TAPERED ROLLER chain driven live roller curve, designed to transport medium duty loads such as castings, drums or pallet loads. Orientation of pallet loads are maintained when using this chain driven live roller curve.

SPECIFY MODEL NUMBER PER EXAMPLE
254TCDLRC-39-90-R
254TCDLRC-(between frames)-(degree)-(left or right)



| UNIT | | 90° | | 45° | | |
|------|---------------|----------------|------------|-----------|------------|------------|
| BF | CONV. SURFACE | OUTSIDE RADIUS | QTY. RLRs. | WT (lbs.) | QTY. RLRs. | WT. (lbs.) |
| 15" | 12" | 5'-2-1/2" | 16 | 344 | 8 | 208 |
| 21" | 18" | 5'-2-1/2" | 16 | 372 | 8 | 225 |
| 27" | 24" | 5'-2-1/2" | 16 | 403 | 8 | 243 |
| 33" | 30" | 7'-9-1/4" | 24 | 447 | 12 | 263 |
| 39" | 36" | 7'-9-1/4" | 24 | 486 | 12 | 310 |
| 45" | 42" | 7'-9-1/4" | 24 | 528 | 12 | 334 |
| 51" | 48" | 7'-9-1/4" | 24 | 559 | 12 | 359 |

SPECIFICATIONS

TREAD ROLLERS: 2-1/2" dia. to 1-11/16" dia. x 14 ga. steel tapered rollers, model 254T with sprockets.

CHAIN DRIVE: Roller to roller with No. 60 circular roller chain.

END DRIVE: Reversible drive, side mounted or underside (specify). Main drive roller is supported by precision, heavy duty, lubricated, ball bearing units.

ROLLER CENTERS: 6" RC measured at outside radius of curve.

CHAIN GUARD: Chain drive is enclosed, top and bottom, along entire length of conveyor.

BEARINGS: Removable type, heavy duty bearings, zinc plated, grease packed, labyrinth sealed.

MOTOR DRIVE: 3/4 HP, 230/460/3, 60 cycle, ODP right angle gear motor.

BED: 6" x 1-1/2" x 10 ga. and 4" x 1-1/2" x 10 ga. formed steel channel frame.

SPEED: 45 FPM, constant.

DRIVE LOCATION: Drive located on outside of curve. Specify right hand drive or left hand drive (drive hand determined with reference point located at outside of curve).

ELECTRICAL CONTROLS: Optional.

| HP @ 45FPM | "C" |
|------------|---------|
| 1/3, 1/2 | 13-5/8" |
| 3/4 | 14" |
| 1 | 14-1/4" |
| 1-1/2 | 15-1/8" |
| 2 | 16" |

OPTIONAL EQUIPMENT

SPEED: Constant speed 1.5-60 FPM; DC variable speed; AC inverter variable speed. Other constant or variable speeds available.
NOTE: CAPACITY CHANGES WITH SPEED. 100 FPM MAX. WITH ROLLER-TO-ROLLER CHAIN DRIVE.

MOTORS: Available through 3 HP in TEFC, explosion proof, dirty duty, 115/230/1, 575/3, etc.

FLOOR SUPPORTS: Supports, knee braces, casters, ceiling hangers and polytier supports available. See Conveyor Accessories.

ELECTRICAL CONTROLS: Magnetic or manual starter; limit switch; others available.

