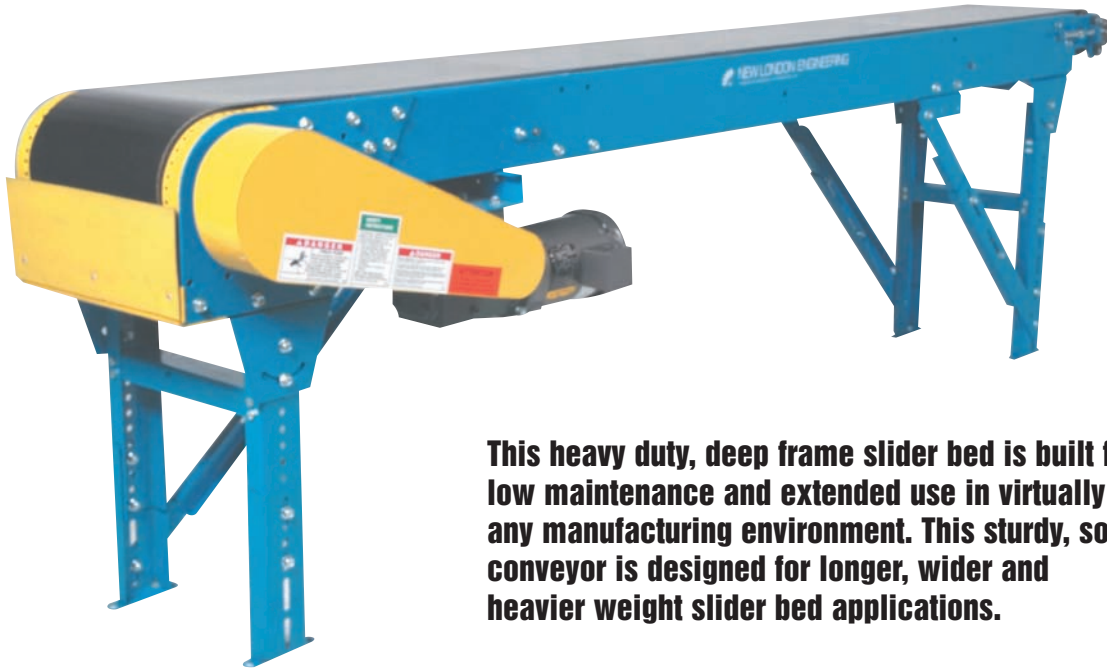


MODEL 220 Medium – Heavy Duty Slider Bed

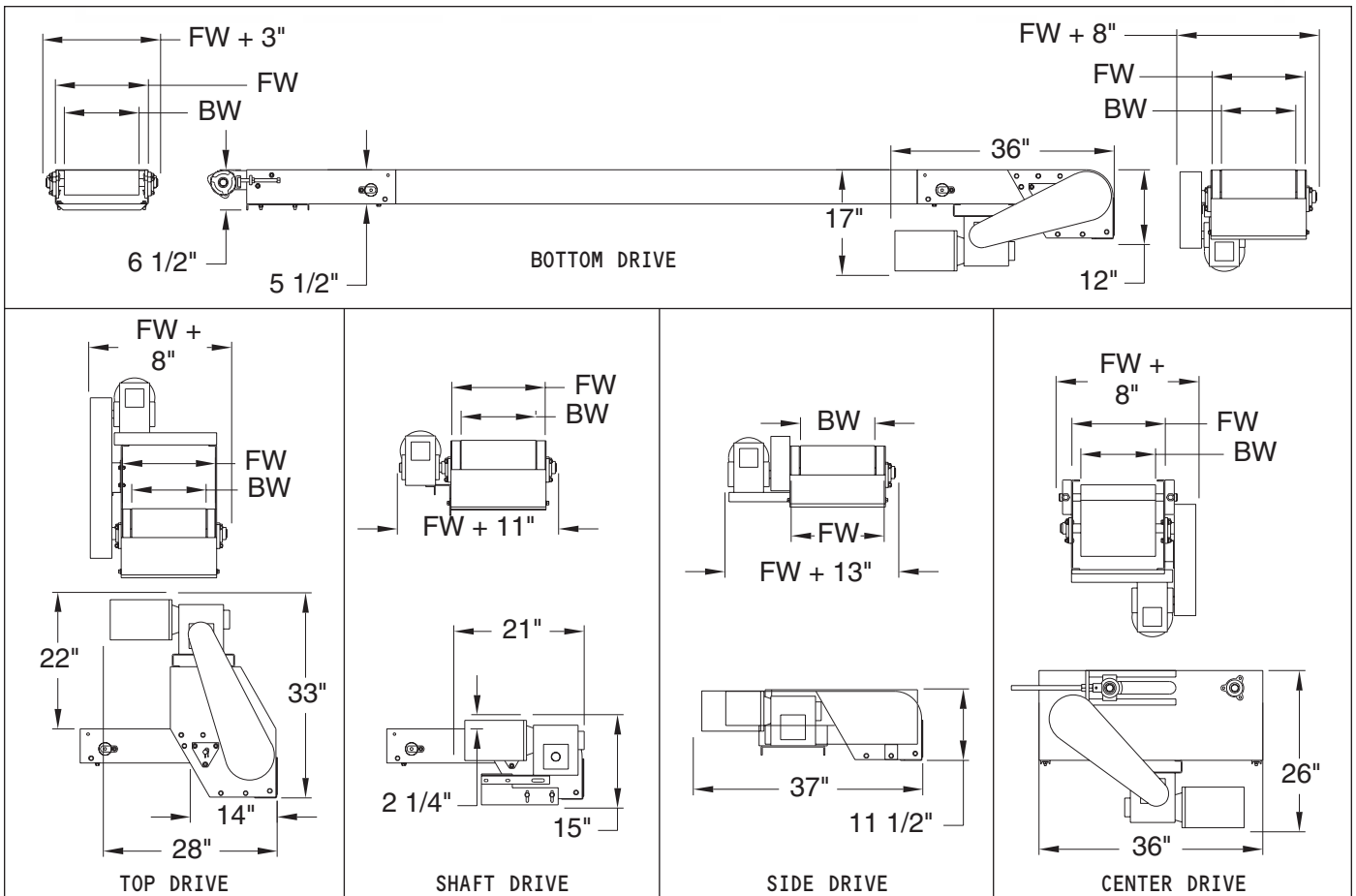


This heavy duty, deep frame slider bed is built for low maintenance and extended use in virtually any manufacturing environment. This sturdy, solid conveyor is designed for longer, wider and heavier weight slider bed applications.



Uptime Express – 24 hour widths are shaded in blue.

Belt Width:	8"	10"	12"	14"	16"	18"	20"	24"	30"	36"	42"	48"
Frame Width:	11"	15"	15"	21-1/2"	21-1/2"	21-1/2"	28"	28"	34"	40"	46"	52"



MODEL 220 Medium – Heavy Duty Slider Bed

Standard Specifications

Widths: Up to 48"

Lengths: 5' – 100' (6" Increments)

Standard Length is 5', Two Piece Bolt Together

Standard Speed: 60 FPM

Standard Motor: 1/2 HP 230/460/3/60 TEFC

Standard Drive: Bottom Mount, Right Side

Standard Belt: Black PVC 120, Clipper Lacing

Drive Pulley: 8" Dia Crown Face Rubber Lagged x 1-7/16"

Infeed Pulley: 4" Dia Crown Face Take Up x 1-3/16"

Frame: 5-1/2" Deep x 12 Gauge

Standard Supports: 30" Elevation Top of Belt

Horizontal Conveyor Comparison Chart

Horizontal Conveyors — These units are used to convey everything from boxes to small pallets.

MODEL	DESCRIPTION	FRAME GAUGE	FRAME DEPTH	DRIVE PULLEY SIZE	DRIVE PULLEY TYPE*	DRIVE PULLEY SHAFT DIA.	INFEED PULLEY SIZE	INFEED PULLEY TYPE*	INFEED PULLEY SHAFT DIA.	STANDARD BELT	STD. DRIVE	OTHER
200	Standard duty slider bed	12	2.75"	4.625"	CFRL pulley	1.1875"	4"	CF pulley	1.1875"	2 ply black PVC 120	Bottom	Base length = 5'
210	Medium duty slider bed	12	2.75"	8.625"	CFRL pulley	1.4375"	4"	CF pulley	1.1875"	2 ply black PVC 120	Bottom	Base length = 5'
220	Medium – heavy duty slider bed	12	5.5"	8.625"	CFRL pulley	1.4375"	4"	CF pulley	1.1875"	2 ply black PVC 120	Bottom	Base length = 5'
221	Heavy duty slider bed	12	5.5"	8.625"	CFRL pulley	1.6875"	4"	CF pulley	1.4375"	2 ply black PVC 120	Bottom	Heavy shaft M220
301	Standard duty V-guided slider bed	12	6.625"	4.625"	FFRL "A" section	1.1875"	4"	FF "A" section	1.1875"	2 ply black PVC 120 "A" section V-guided	Bottom	V-guided deep frame M200
311	Medium duty V-guided slider bed	12	6.625"	8.625"	FFRL "A" section	1.4375"	4"	FF "A" section	1.1875"	2 ply black PVC 120 "A" section V-guided	Bottom	V-guided deep frame M220
321	Heavy Duty V-guided slider bed	12	6.625"	8.625"	FFRL "A" section	1.6875"	4"	FF "A" section	1.4375"	2 ply black PVC 120 "A" section V-guided	Bottom	Heavy shaft M311
640	Heavy duty belt over roller bed	12	6.5"	8.625"	CFRL pulley	1.4375"	4"	CF pulley	1.1875"	2 ply black PVC 120	Bottom @ dis.	Rollers – 2" dia. x 16 ga. x .4375" hex on 6" centers

*BM = Bottom Mount; CF = Crown Faced; CDBM = Center Drive Bottom Mount; CH = Channel; FF = Flat Faced; RL = Rubber Lagged; RA = Right Angle; Std = Standard

Unit Weights (Shipping Weights – lbs.)

BELT WIDTHS	6"	8"	10"	12"	14"	16"	18"	20"	24"	30"	36"	42"	48"
LENGTHS													
5'	248	295	330	335	375	380	385	420	425	455	490	575	645
10'	345	395	430	435	480	485	490	535	540	585	645	745	835
15'	477	531	566	571	622	627	632	688	693	754	840	956	1067
20'	574	631	666	671	727	732	737	803	808	884	995	1126	1257
25'	706	767	802	807	869	874	879	956	961	1053	1190	1337	1489
30'	803	867	902	907	974	979	984	1071	1076	1183	1345	1507	1679
35'	935	1003	1038	1043	1116	1121	1126	1224	1229	1354	1540	1718	1911
40'	1032	1103	1138	1143	1221	1226	1231	1339	1344	1482	1695	1888	2101
45'	1164	1239	1274	1279	1363	1368	1373	1492	1497	1651	1890	2099	2333
50'	1261	1339	1374	1379	1468	1473	1478	1607	1612	1781	2045	2269	2523
55'	1393	1475	1510	1515	1610	1615	1620	1760	1765	1950	2240	2480	2755
60'	1490	1575	1610	1615	1715	1720	1725	1875	1880	2080	2395	2650	2945

Conveyor weights include standard drive and supports. Other options, crating etc. are not included.

Skid Dimensions

Model 220 — Note: these are general guidelines for freight rate estimates only. Final dimensions may vary.

BELT WIDTHS	8"	10"	12"	14"	16"	18"	20"	24"	30"	36"	42"	48"
Bottom, Top & Center Mount Skid Width	25"	25"	25"	25"	30"	30"	41"	41"	41"	47"	53"	59"
Shaft and Side Mount Skid Width	25"	25"	30"	30"	41"	41"	41"	41"	46"	52"	58"	64"

Skid Length – Model M220's ship knocked down on 11' long skids. Use this length for frt. estimates. Up to 50' of conveyor can be stacked on one skid.