

MODEL 700 Standard Duty Magnetic Conveyor

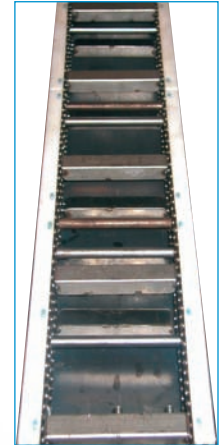


Appropriate for applications involving small metal particles and/or metallic sludge. Well suited when particles are submerged, collected or filtered in tanks. This unit has no external moving parts so jamming and maintenance problems are virtually eliminated.



This is a full length front view of a Model 700 with the stainless steel deck removed

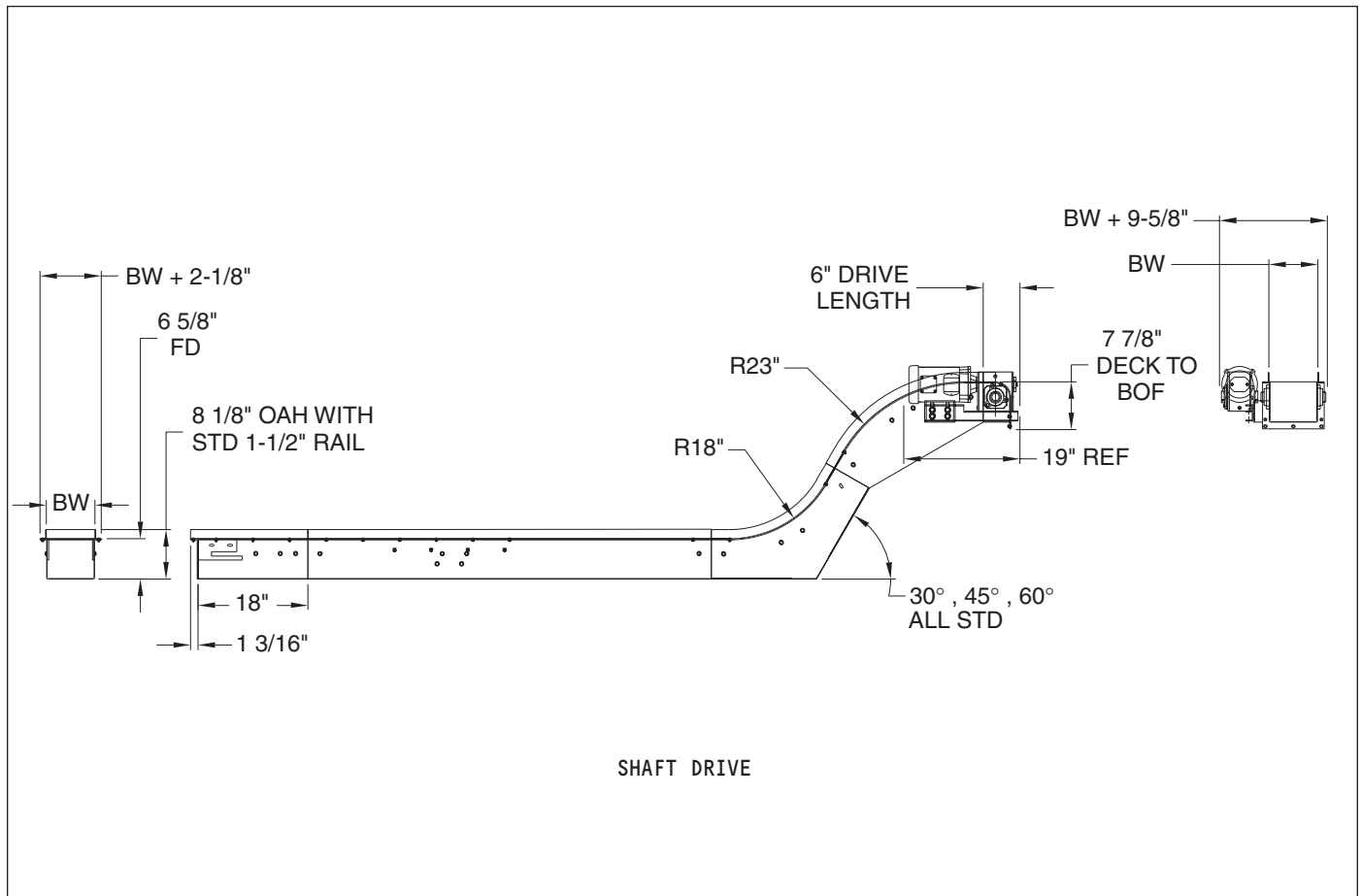
Full length front view photo



Close up photo of the stainless steel deck



Deck Width:	6"	8"	10"	12"	18"
Frame Width:	8-1/16"	10-1/16"	12-1/16"	14-1/16"	20-1/16"



MODEL 700 Standard Duty Magnetic Conveyor



Standard Specifications

Widths: 6", 8", 10", 12", 14", 16" and 18"

Curves: 30°, 45°, 60° and 75°

Lengths: Up to 20'

Standard Speed: 24, 36, 48, 60 FPM

Standard Motor: 1/2 HP 230/460/3/60 TEFC

Drive: Shaft Mount, Right Side

Frame: 6-5/8" Deep x 12 Gauge

Bearings: Grease Sealed

Sprockets: 60B 13 x 1-3/16", Keyed in Line at Discharge;
60A 13 x 1-3/4", with Press in Bearings

Deck: 12 Gauge Stainless Steel Precision Roller Hi-Radius Deck. Our unique long radius self-cleaning discharge head insures dependable product discharge.

Magnets: Enclosed with Stainless Steel;
Charged Ceramic or Charged Neodymium

Magnet Centers: 12" Centers are Standard,
but vary by application

Chain/Tracks: #60 Roller Chain Mounted to UHMW

Access Panels: Access panels provide quick and easy access for inspections or service

Magnetic Conveyor Comparison Chart

Magnetic Conveyors — Magnetic conveyors are used to convey very fine metal or parts with sharp edges that may get caught in the belting of a hinged steel belt

MODEL	DESCRIPTION	FRAME GAUGE	FRAME DEPTH	DRIVER SIZE	DRIVER TYPE	DRIVE SHAFT DIA.	IDLER SIZE	IDLER TYPE	IDLER SHAFT DIA.	STANDARD CARRIER	STD. DRIVE	OTHER
700	Standard duty magnetic conveyor	12	6.625"	13 tooth	3.1" pd	1.1875"	13 tooth	3.1" pd	0.6875" hex	Magnets on 12" centers	Shaft	Standard duty and heavy duty magnets are available

Unit Weights (Shipping Weights – lbs.)

BELT WIDTHS	8"	10"	12"	14"	16"	18"
LENGTHS						
2'	230	236	243	250	257	263
4'	266	276	287	298	309	319
8'	338	356	375	394	413	431
12'	446	473	501	529	557	584
16'	518	553	589	625	661	696
20'	590	633	677	721	765	808
24'	662	713	765	817	869	920
ADD FOR EACH CURVE	35	38	42	46	50	54

Conveyor weights include standard drive and supports. Other options, crating etc. are not included.

Skid Dimensions

Model 700 — Note: these are general guidelines for freight rate estimates only. Final dimensions may vary.

BELT WIDTHS	8"	12"	18"	24"	30"	36"
Shaft Mount Skid Width	20"	24"	30"	36"	42"	48"

Skid Length – These units are typically shipped assembled. The skid length is the overall length + 5". Maximum skid length is 27'.

