

MODEL 715 Light Duty – 1-1/2" Pitch Chip Conveyor

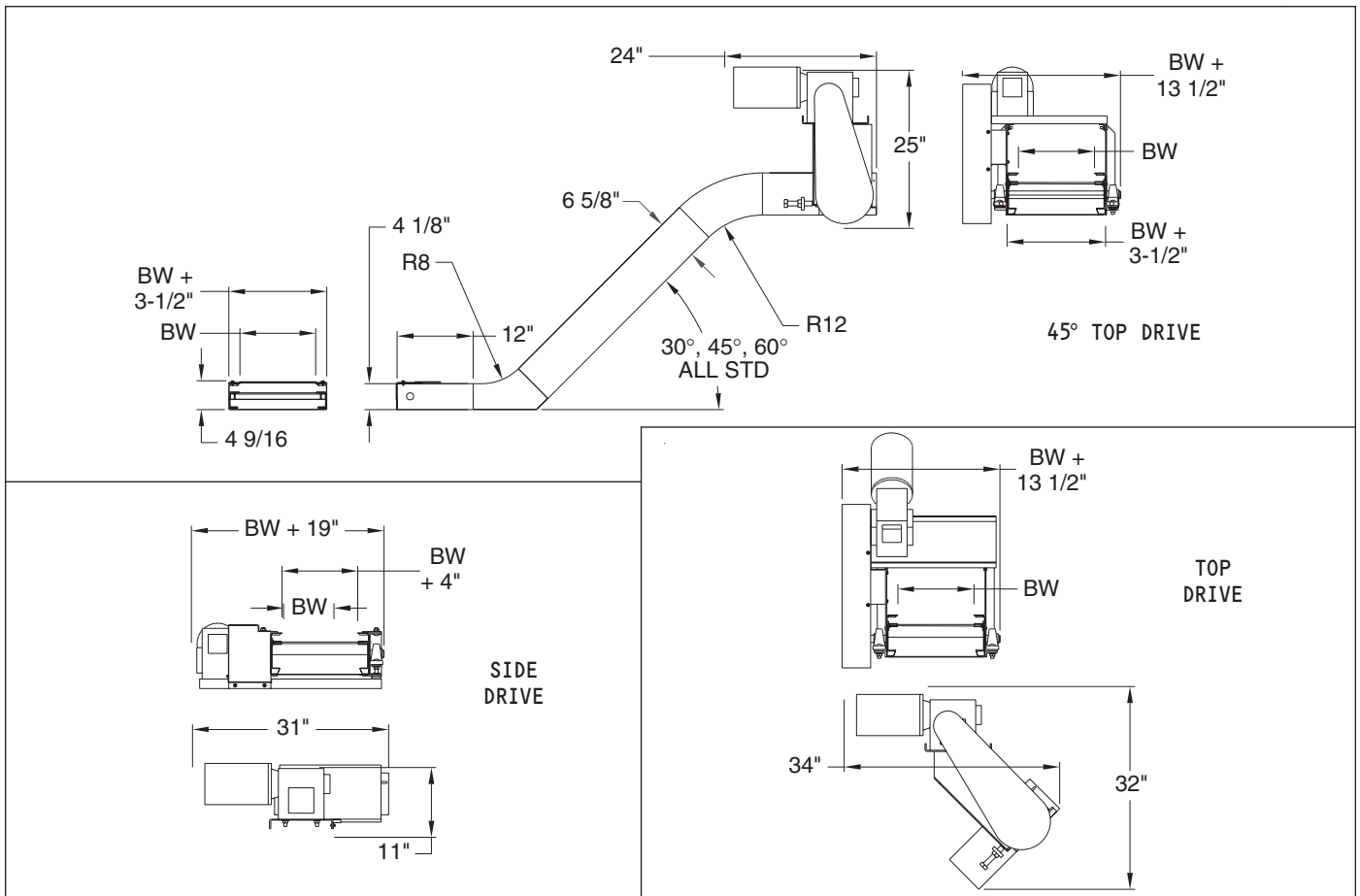


This compact but rugged conveyor is the ideal choice for handling very small parts, stampings, scrap, chips and turnings. Its condensed size also allows it to fit into tight spaces too small for a standard 2-1/2" pitch machine.



Model 715 Type III
with 60 degree curves

Chain Width:	4"	6"	8"	10"	12"	18"
Frame Width:	7-1/2"	9-1/2"	11-1/2"	13-1/2"	15-1/2"	21-1/2"



MODEL 715 Light Duty – 1-1/2" Pitch Chip Conveyor

Standard Specifications

Widths: 4" – 24" (Custom Widths Available)

Lengths: 3' – 20' (Infeed = 12"/Discharge = 18")

Curves: 30°, 45° and 60°

Standard Speed: 30 FPM

Standard Motor: 1/2 HP 230/460/3/60 TEFC

Standard Drive: Top Mount, Right Side

Frame: 4-1/8" Deep at Infeed;

6-5/8" Deep, Lower Curve thru Discharge x 14 Gauge

Bearings: Grease Sealed at Discharge;
Press in Bronze Bushings at Infeed

Sprockets: 10 Tooth x 4.854" Pitch Diameter

Belt: 1-1/2" Pitch Hinged Steel Belt, One Piece Conventional
14 Gauge Apron, with 5/8" high cleats on 12" Centers,
12 Gauge x 3/4" high radial side wings, 7/8" x 1/2" wide
Flat Face Rollers, 12 Gauge Outside Sidebars

NOTE: Conventional Belt Only

Hinged Steel Belt Comparison Chart

Hinged Steel Belt Conveyors – Chip and Scrap Hinged Steel Belt Conveyors — Hinged Steel Belts are designed to carry hot & oily metal parts or scrap. When determining which hinged steel belt model fits your application, pay special attention to the unit's **frame depth and cleat height**. A deeper frame adds the strength needed for longer runs and heavier loads. Deeper frames also provide the room for taller cleats. A taller cleat will move more product than a shorter one. A taller cleat may also be required for steeper inclines (For example, a 1-1/2" high cleat will carry more load up a 60 degree incline than a 5/8" high cleat.) Other unit's lower profile frames are designed to fit into tight spaces.

MODEL	DESCRIPTION	FRAME GAUGE	FRAME DEPTH	DRIVER SIZE	DRIVER TYPE	DRIVE SHAFT DIA.	IDLER SIZE	IDLER TYPE	IDLER SHAFT DIA.	STANDARD CARRIER	STD. DRIVE	OTHER
715	Light duty – 1-1/2" pitch chip conveyor	14	4.125"	10 tooth	4.854 pd	1.1875"	1.375" OD	Hub	.75"	14ga aprons, 5/8" cleats on 12" centers	Top	Frame tapers from 4.125" @ infeed to 6-5/8" @ discharge
720	Medium duty chip conveyor	12	8.5"	6 tooth	5" pd	1.6875"	6 tooth	5" pd	1.1875"	12ga aprons, 1-3/8" cleats on 12-1/2" centers	Top	720 – Heavy shaft M721
723	Liquid tight M720											723 – Heavy shaft, liquid tight M721
721	Standard duty scrap conveyor	12	8.5"	6 tooth	5" pd	1.4375"	6 tooth	5" pd	1.1875"	12ga aprons, 1-3/8" cleats on 12-1/2" centers	Top	Entire frame is 8-1/2" deep – Flat top cleats are 1-1/8" high
724	Liquid tight M721											
722	Light duty chip conveyor	12	6.625"	5 tooth	4.25" pd	1.1875"	5 tooth	4.25"	1.1875"	12ga aprons, 7/8" cleats on 12-1/2" centers	Top	Entire frame is 6-5/8" deep – Flat top cleats are 5/8" high
726	Liquid tight M722											
725	Low profile infeed chip conveyor	12	5.375"	5 tooth	4.25 pd	1.1875"	1.75" OD	Hub	.75"	12ga aprons, 7/8" cleats on 12-1/2" centers	Top	Frame tapers from 5-3/8" to 6-5/8" – Flat top cleats are 5/8" high
727	Tapered infeed cold header conveyor	12	6.625"	5 tooth	4.25 pd	1.1875"	5 tooth	4.25"	1.1875"	12ga aprons, 5/8" cleats on 12-1/2" centers	Top	Frame tapers from 6-5/8" to 4-1/8" back to 6-5/8"

Unit Weights (Shipping Weights – lbs.)

BELT WIDTHS	4"	6"	8"	12"	18"	24"
LENGTHS						
4'	283	332	381	416	497	567
8'	456	530	603	685	836	957
12'	665	765	863	993	1215	1388
16'	838	963	1085	1262	1554	1778
20'	1011	1161	1307	1531	1893	2168
24'	1220	1396	1567	1839	2272	2599
28'	1393	1594	1789	2108	2611	2989
ADD FOR EACH CURVE	42	49	56	68	76	93

Conveyor weights include standard drive and supports. Other options, crating etc. are not included.

Skid Dimensions

Model 715 — Note: these are general guidelines for freight rate estimates only. Final dimensions may vary.

BELT WIDTHS	4"	6"	8"	12"	18"	24"	30"	36"
Top Mount Skid Width	16"	18"	20"	24"	30"	36"	42"	48"
Side Mount Skid Width	28"	30"	32"	36"	42"	48"	54"	60"

Skid Length – These units are typically shipped assembled. The skid length is the overall length + 5". Maximum skid length is 27'.

