

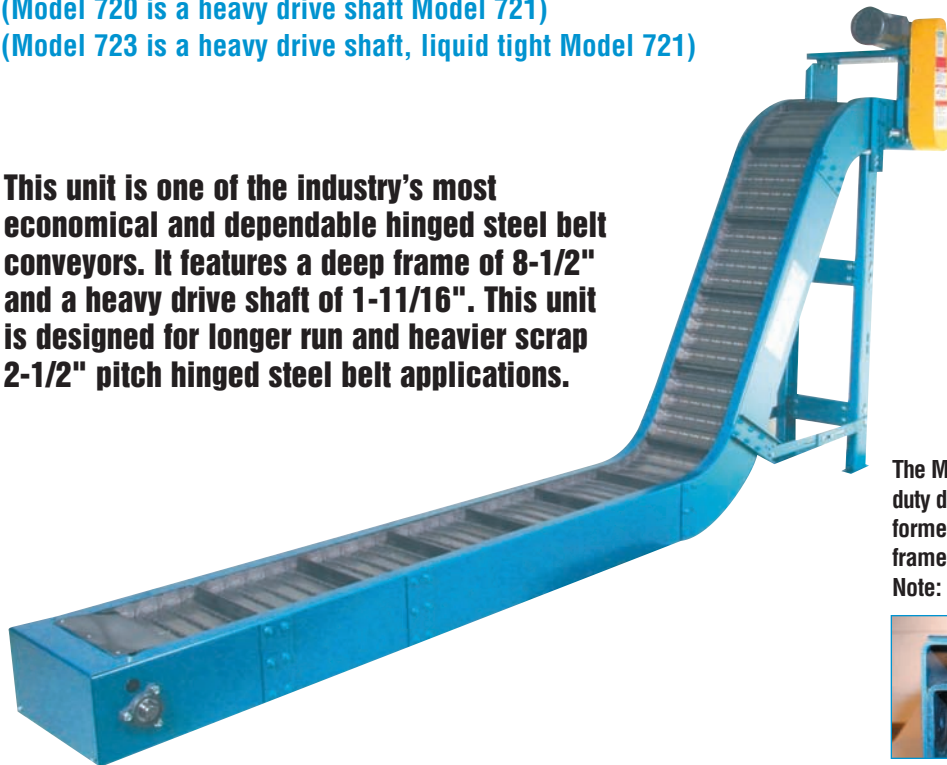
MODEL 720 & 723 Medium Duty Chip Conveyor



(Model 720 is a heavy drive shaft Model 721)

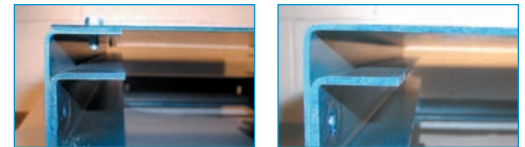
(Model 723 is a heavy drive shaft, liquid tight Model 721)

This unit is one of the industry's most economical and dependable hinged steel belt conveyors. It features a deep frame of 8-1/2" and a heavy drive shaft of 1-11/16". This unit is designed for longer run and heavier scrap 2-1/2" pitch hinged steel belt applications.

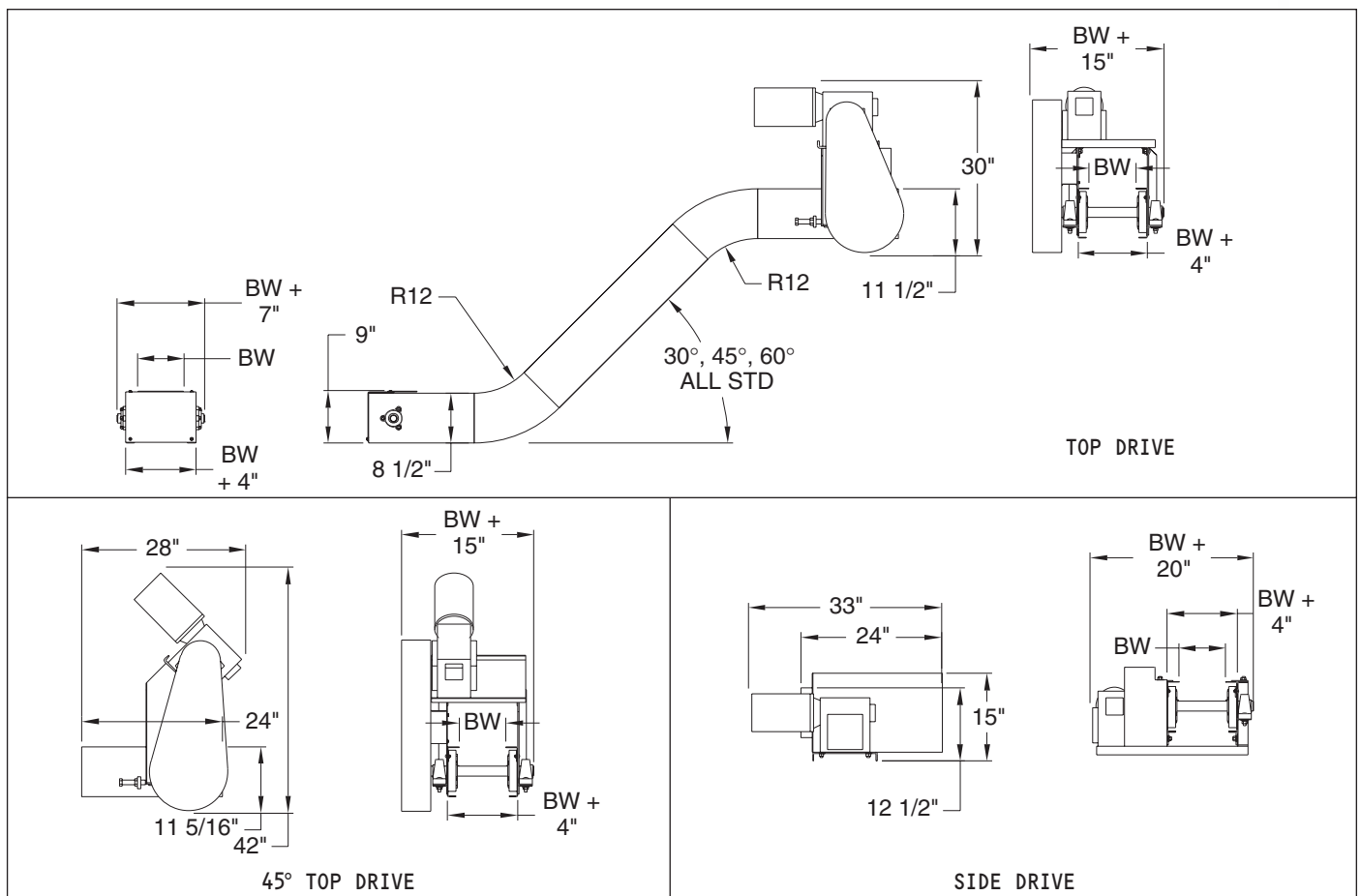


Model 720 Type III with 60 degree curves

The Model 723 is a liquid tight Model 720 with a heavy duty drive shaft – The liquid tight frame is one piece of formed metal as shown on the right photo. A typical frame with a bolt on bottom pan is shown on the left. Note: Photos are shown with the bottom side up.



Belt Width:	6"	8"	12"	18"	24"	30"	36"
Frame Width:	10"	12"	16"	22"	28"	34"	40"



MODEL 720 & 723 Medium Duty Chip Conveyor



Standard Specifications

Widths: 6", 8", 12", 18", 24", 30" and 36"
(Custom Widths Available)

Lengths: Depends on Application

Standard Speed: 30 FPM

Standard Motor: 1/2 HP 230/460/3/60 TEFC

Standard Drive: Top Mount, Right Side

Frame: 8-1/2" Deep x Formed 12 Gauge

Drive Shaft: 1-11/16" diameter (The M721 is 1-7/16" dia.)

Bearings: Grease Sealed

Sprockets: 6 Tooth x 5" Pitch Diameter

Belt: 2-1/2" Pitch Hinged Steel Belt with 1-3/8" high cleats on 12-1/2" Centers, 1.5" high side wings, 1.5" Diameter Rollers (Flanged Rollers are available), Outside Sidebars are required on belts greater than 18", but also optional for smaller widths.

Hinged Steel Belt Comparison Chart

Hinged Steel Belt Conveyors – Chip and Scrap Hinged Steel Belt Conveyors — Hinged Steel Belts are designed to carry hot & oily metal parts or scrap.

When determining which hinged steel belt model fits your application, pay special attention to the unit's **frame depth and cleat height**. A deeper frame adds the strength needed for longer runs and heavier loads. Deeper frames also provide the room for taller cleats. A taller cleat will move more product than a shorter one. A taller cleat may also be required for steeper inclines (For example, a 1-1/2" high cleat will carry more load up a 60 degree incline than a 5/8" high cleat.) Other unit's lower profile frames are designed to fit into tight spaces.

MODEL	DESCRIPTION	FRAME GAUGE	FRAME DEPTH	DRIVER SIZE	DRIVER TYPE	DRIVE SHAFT DIA.	IDLER SIZE	IDLER TYPE	IDLER SHAFT DIA.	STANDARD CARRIER	STD. DRIVE	OTHER
715	Light duty – 1-1/2" pitch chip conveyor	14	4.125"	10 tooth	4.854 pd	1.1875"	1.375" OD	Hub	.75"	14ga aprons, 5/8" cleats on 12" centers	Top	Frame tapers from 4.125" @ infeed to 6-5/8" @ discharge
720	Medium duty chip conveyor	12	8.5"	6 tooth	5" pd	1.6875"	6 tooth	5" pd	1.1875"	12ga aprons, 1-3/8" cleats on 12-1/2" centers	Top	720 – Heavy shaft M721 723 – Heavy shaft, liquid tight M721
723	Liquid tight M720											
721	Standard duty scrap conveyor	12	8.5"	6 tooth	5" pd	1.4375"	6 tooth	5" pd	1.1875"	12ga aprons, 1-3/8" cleats on 12-1/2" centers	Top	Entire frame is 8-1/2" deep – Flat top cleats are 1-1/8" high
724	Liquid tight M721											
722	Light duty chip conveyor	12	6.625"	5 tooth	4.25" pd	1.1875"	5 tooth	4.25"	1.1875"	12ga aprons, 7/8" cleats on 12-1/2" centers	Top	Entire frame is 6-5/8" deep – Flat top cleats are 5/8" high
726	Liquid tight M722											
725	Low profile infeed chip conveyor	12	5.375"	5 tooth	4.25 pd	1.1875"	1.75" OD	Hub	.75"	12ga aprons, 7/8" cleats on 12-1/2" centers	Top	Frame tapers from 5-3/8" to 6-5/8" – Flat top cleats are 5/8" high
727	Tapered infeed cold header conveyor											

Unit Weights (Shipping Weights – lbs.)

Model 720

BELT WIDTHS	4"	6"	8"	12"	18"	24"	30"	36"
LENGTHS								
4'	421	446	472	526	609	670	753	836
8'	597	643	690	786	931	1034	1179	1322
12'	809	877	946	1085	1293	1439	1647	1851
16'	985	1074	1164	1345	1615	1803	2073	2337
20'	1161	1271	1382	1605	1937	2167	2499	2823
24'	1373	1505	1638	1904	2299	2572	2967	3352
28'	1549	1702	1856	2164	2621	2936	3393	3838
ADD FOR EACH CURVE	54	62	68	80	98	110	128	146

Conveyor weights include standard drive and supports. Other options, crating etc. are not included.

Model 723

BELT WIDTHS	4"	6"	8"	12"	18"	24"	30"	36"
LENGTHS								
4'	420	449	447	537	628	698	789	885
8'	599	652	674	811	972	1093	1255	1421
12'	814	892	939	1124	1356	1529	1763	2000
16'	993	1095	1166	1398	1700	1924	2229	2536
20'	1172	1298	1393	1672	2044	2319	2695	3072
24'	1387	1538	1658	1985	2428	2755	3203	3651
28'	1566	1741	1885	2259	2772	3150	3669	4187
ADD FOR EACH CURVE	51	58	64	77	97	111	131	150

Conveyor weights include standard drive and supports. Other options, crating etc. are not included.

Skid Dimensions

Model 720 — Note: these are general guidelines for freight rate estimates only. Final dimensions may vary.

BELT WIDTHS	4"	6"	8"	12"	18"	24"	30"	36"
Top Mount Skid Width	16"	18"	20"	24"	30"	36"	42"	48"
Side Mount Skid Width	28"	30"	32"	36"	42"	48"	54"	60"

Skid Length – These units are typically shipped assembled. The skid length is the overall length + 5". Maximum skid length is 27'.

Model 723 — Note: these are general guidelines for freight rate estimates only. Final dimensions may vary.

BELT WIDTHS	4"	6"	8"	12"	18"	24"	30"	36"
Top Mount Skid Width	16"	18"	20"	24"	30"	36"	42"	48"
Side Mount Skid Width	28"	30"	32"	36"	42"	48"	54"	60"

Skid Length – These units are typically shipped assembled. The skid length is the overall length + 5". Maximum skid length is 27'.