

MODEL 722 & 726 Light Duty Chip Conveyor



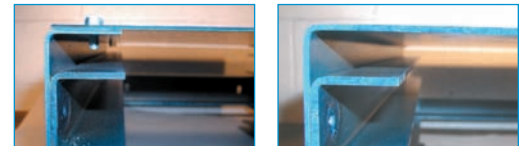
(Model 726 is a liquid tight Model 722)

This unit has a shallow frame of 6-5/8" which allows it to fit into tighter spaces other 2-1/2" pitch units can't. Its smaller overall construction and the corresponding tighter tolerances makes this the ideal choice when conveying small and more finite scrap.



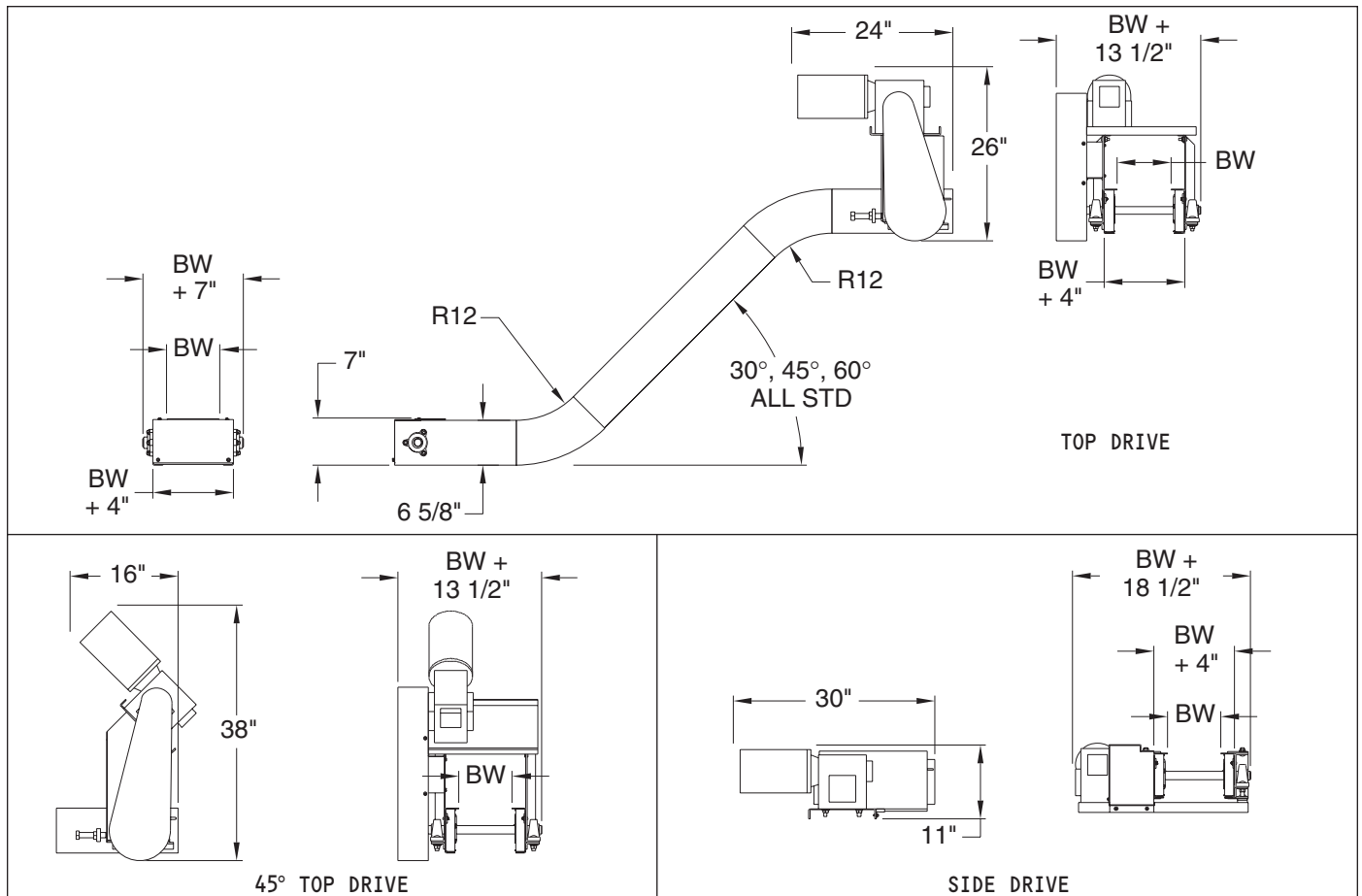
Model 722 Type III with 45 degree curves

The Model 726 is a liquid tight Model 722 – The liquid tight frame is one piece of formed metal as shown on the right photo. A typical frame with a bolt on bottom pan is shown on the left. Note: Photos are shown with the bottom side up.



Uptime Express – 3-5 day widths are shaded in blue.

Belt Width:	6"	8"	12"	18"	24"	30"	36"
Frame Width:	10"	12"	16"	22"	28"	34"	40"



MODEL 722 & 726 Light Duty Chip Conveyor



Standard Specifications

Widths: 6", 8", 12", 18", 24", 30" and 36"
(Custom Widths Available)

Lengths: Per Application

Standard Speed: 30 FPM

Standard Motor: 1/2 HP 230/460/3/60 TEFC

Standard Drive: Top Mount, Right Side

Frame: 6-5/8" Deep x Formed 12 Gauge

Bearings: Grease Sealed

Sprockets: 5 Tooth x 4.25" Pitch Diameter

Belt: 2-1/2" Pitch Hinged Steel Belt, One Piece Apron, with 7/8" high cleats on 12-1/2" Centers, 1" high side wings, 1.5" Diameter Rollers (Flanged Rollers are available), Outside Sidebars are required on belts greater than 18", but also optional for smaller widths.

Hinged Steel Belt Comparison Chart

Hinged Steel Belt Conveyors – Chip and Scrap Hinged Steel Belt Conveyors — Hinged Steel Belts are designed to carry hot & oily metal parts or scrap. When determining which hinged steel belt model fits your application, pay special attention to the unit's **frame depth and cleat height**. A deeper frame adds the strength needed for longer runs and heavier loads. Deeper frames also provide the room for taller cleats. A taller cleat will move more product than a shorter one. A taller cleat may also be required for steeper inclines (For example, a 1-1/2" high cleat will carry more load up a 60 degree incline than a 5/8" high cleat.) Other unit's lower profile frames are designed to fit into tight spaces.

MODEL	DESCRIPTION	FRAME GAUGE	FRAME DEPTH	DRIVER SIZE	DRIVER TYPE	DRIVE SHAFT DIA.	IDLER SIZE	IDLER TYPE	IDLER SHAFT DIA.	STANDARD CARRIER	STD. DRIVE	OTHER
715	Light duty – 1-1/2" pitch chip conveyor	14	4.125"	10 tooth	4.854 pd	1.1875"	1.375" OD	Hub	.75"	14ga aprons, 5/8" cleats on 12" centers	Top	Frame tapers from 4.125" @ infeed to 6-5/8" @ discharge
720	Medium duty chip conveyor	12	8.5"	6 tooth	5" pd	1.6875"	6 tooth	5" pd	1.1875"	12ga aprons, 1-3/8" cleats on 12-1/2" centers	Top	720 – Heavy shaft M721
723	Liquid tight M720											723 – Heavy shaft, liquid tight M721
721	Standard duty scrap conveyor	12	8.5"	6 tooth	5" pd	1.4375"	6 tooth	5" pd	1.1875"	12ga aprons, 1-3/8" cleats on 12-1/2" centers	Top	Entire frame is 8-1/2" deep – Flat top cleats are 1-1/8" high
724	Liquid tight M721											
722	Light duty chip conveyor	12	6.625"	5 tooth	4.25" pd	1.1875"	5 tooth	4.25"	1.1875"	12ga aprons, 7/8" cleats on 12-1/2" centers	Top	Entire frame is 6-5/8" deep – Flat top cleats are 5/8" high
726	Liquid tight M722											
725	Low profile infeed chip conveyor	12	5.375"	5 tooth	4.25 pd	1.1875"	1.75" OD	Hub	.75"	12ga aprons, 7/8" cleats on 12-1/2" centers	Top	Frame tapers from 5-3/8" to 6-5/8" – Flat top cleats are 5/8" high
727	Tapered infeed cold header conveyor	12	6.625"	5 tooth	4.25 pd	1.1875"	5 tooth	4.25"	1.1875"	12ga aprons, 5/8" cleats on 12-1/2" centers	Top	Frame tapers from 6-5/8" to 4-1/8" back to 6-5/8"

Unit Weights (Shipping Weights – lbs.)

Model 722

BELT WIDTHS	4"	6"	8"	12"	18"	24"	30"	36"
LENGTHS								
4'	365	389	412	459	537	600	676	750
8'	535	583	626	714	854	961	1100	1236
12'	741	814	878	1008	1211	1363	1566	1765
16'	911	1008	1092	1263	1528	1724	1990	2251
20'	1081	1202	1306	1518	1845	2085	2414	2737
24'	1287	1433	1558	1812	2202	2487	2880	3266
28'	1457	1627	1772	2067	2519	2848	3304	3752
ADD FOR EACH CURVE	49	55	61	74	92	106	124	142

Conveyor weights include standard drive and supports. Other options, crating etc. are not included.

Model 726

BELT WIDTHS	4"	6"	8"	12"	18"	24"	30"	36"
LENGTHS								
4'	348	374	401	454	537	604	686	768
8'	521	572	623	723	876	994	1147	1299
12'	730	807	883	1031	1255	1425	1650	1873
16'	903	1005	1105	1300	1594	1815	2111	2404
20'	1076	1203	1327	1569	1933	2205	2572	2935
24'	1285	1438	1587	1877	2312	2636	3075	3509
28'	1458	1636	1809	2146	2651	3026	3536	4040
ADD FOR EACH CURVE	48	54	61	74	93	107	126	146

Conveyor weights include standard drive and supports. Other options, crating etc. are not included.

Skid Dimensions

Model 722 — Note: these are general guidelines for freight rate estimates only. Final dimensions may vary.

BELT WIDTHS	4"	6"	8"	12"	18"	24"	30"	36"
Top Mount Skid Width	16"	18"	20"	24"	30"	36"	42"	48"
Side Mount Skid Width	28"	30"	32"	36"	42"	48"	54"	60"

Skid Length – These units are typically shipped assembled. The skid length is the overall length + 5". Maximum skid length is 27'.

Model 726 — Note: these are general guidelines for freight rate estimates only. Final dimensions may vary.

BELT WIDTHS	4"	6"	8"	12"	18"	24"	30"	36"
Top Mount Skid Width	16"	18"	20"	24"	30"	36"	42"	48"
Side Mount Skid Width	28"	30"	32"	36"	42"	48"	54"	60"

Skid Length – These units are typically shipped assembled. The skid length is the overall length + 5". Maximum skid length is 27'.