

# MODEL 727 Tapered Infeed – Cold Header Conveyor



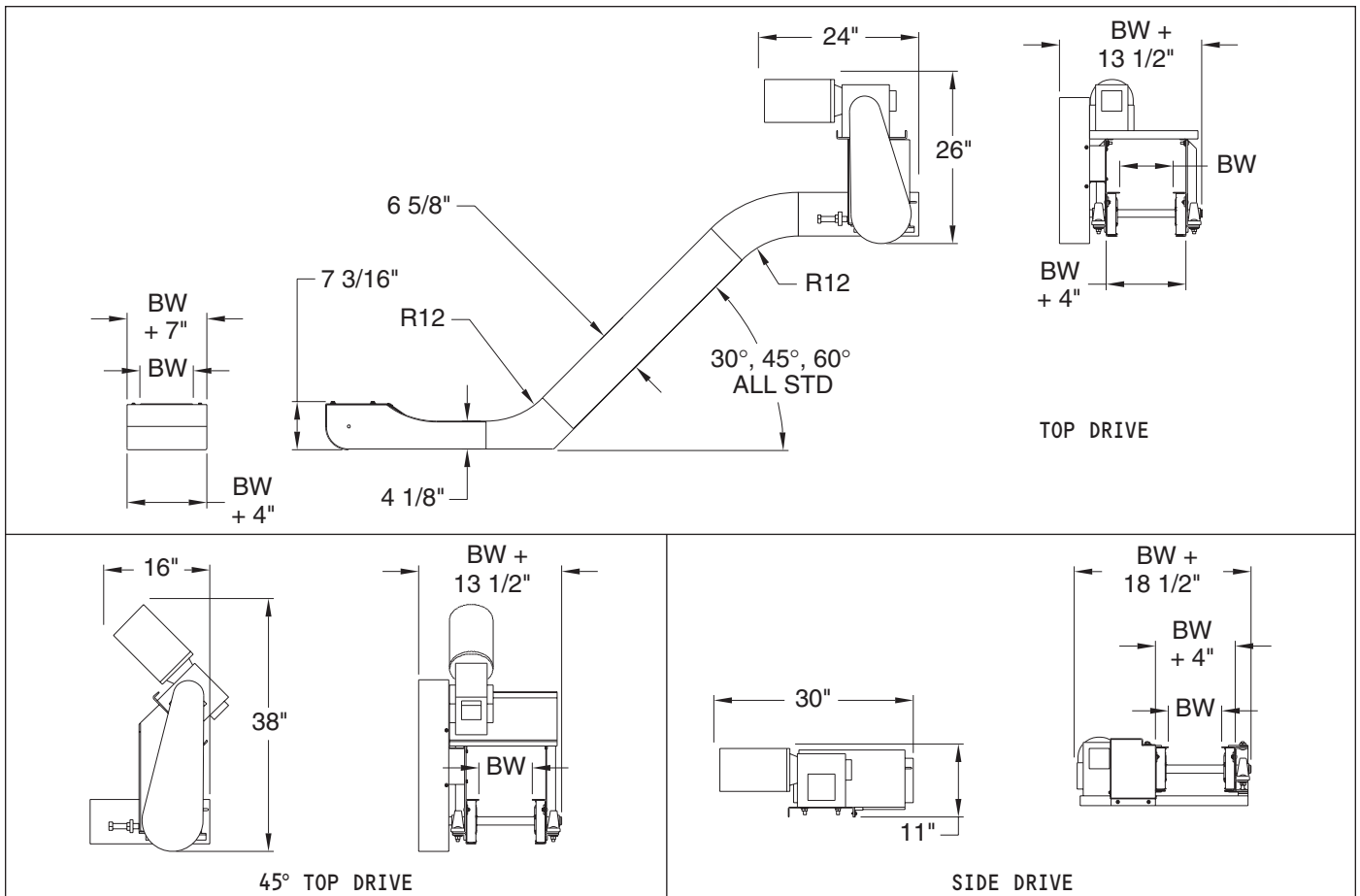
This units infeed tapers from 6-5/8" to 4-1/8" and then back to 6-5/8". The very shallow 4-1/8" section is designed so the unit can fit into a very tight space inside or under an existing machine.



Unit is shown with a special "fully" rounded infeed.

Unit shown with optional siderails

|                     |     |     |     |     |     |     |     |
|---------------------|-----|-----|-----|-----|-----|-----|-----|
| <b>Belt Width:</b>  | 6"  | 8"  | 12" | 18" | 24" | 30" | 36" |
| <b>Frame Width:</b> | 10" | 12" | 16" | 22" | 28" | 34" | 40" |



# MODEL 727 Tapered Infeed – Cold Header Conveyor



## Standard Specifications

**Widths:** 6", 8", 12", 18", 24", 30" and 36"  
(Custom Widths Available)

**Lengths:** Per Application

**Standard Speed:** 30 FPM

**Standard Motor:** 1/2 HP 230/460/3/60 TEFC

**Standard Drive:** Top Mount, Right Side

**Frame:** 6-5/8" Deep x Formed 12 Gauge

**Infeed:** Semi-Rounded

**Drive Shaft:** 1-3/16" diameter

**Bearings:** Grease Sealed, Marine @ Infeed

**Sprockets:** 5 Tooth x 4.25" Pitch Diameter

**Belt:** 2-1/2" Pitch Hinged Steel Belt, One Piece Apron, with 5/8" high cleats on 12-1/2" Centers, 1" high side wings, 1.5" Diameter rollers (Flanged Rollers are available), Outside Sidebars are required on belts greater than 18", but also optional for smaller widths.

## Hinged Steel Belt Comparison Chart

**Hinged Steel Belt Conveyors – Chip and Scrap Hinged Steel Belt Conveyors** — Hinged Steel Belts are designed to carry hot & oily metal parts or scrap. When determining which hinged steel belt model fits your application, pay special attention to the unit's **frame depth and cleat height**. A deeper frame adds the strength needed for longer runs and heavier loads. Deeper frames also provide the room for taller cleats. A taller cleat will move more product than a shorter one. A taller cleat may also be required for steeper inclines (For example, a 1-1/2" high cleat will carry more load up a 60 degree incline than a 5/8" high cleat.) Other unit's lower profile frames are designed to fit into tight spaces.

| MODEL | DESCRIPTION                             | FRAME GAUGE | FRAME DEPTH | DRIVER SIZE | DRIVER TYPE | DRIVE SHAFT DIA. | IDLER SIZE | IDLER TYPE | IDLER SHAFT DIA. | STANDARD CARRIER                              | STD. DRIVE | OTHER  |
|-------|---|-------------|-------------|-------------|-------------|------------------|------------|------------|------------------|---|------------|--|
| 715   | Light duty – 1-1/2" pitch chip conveyor | 14          | 4.125"      | 10 tooth    | 4.854 pd    | 1.1875"          | 1.375" OD  | Hub        | .75"             | 12ga aprons, 5/8" cleats on 12" centers       | Top        | Frame tapers from 4.125" @ infeed to 6-5/8" @ discharge            |
| 720   | Medium duty chip conveyor               | 12          | 8.5"        | 6 tooth     | 5" pd       | 1.6875"          | 6 tooth    | 5" pd      | 1.1875"          | 12ga aprons, 1-3/8" cleats on 12-1/2" centers | Top        | 720 – Heavy shaft  |
| 723   | Liquid tight M720                       |             |             |             |             |                  |            |            |                  |   |            | 723 – Heavy shaft, liquid tight M721                               |
| 721   | Standard duty scrap conveyor            | 12          | 8.5"        | 6 tooth     | 5" pd       | 1.4375"          | 6 tooth    | 5" pd      | 1.1875"          | 12ga aprons, 1-3/8" cleats on 12-1/2" centers | Top        | Entire frame is 8-1/2" deep – Flat top cleats are 1-1/8" high      |
| 724   | Liquid tight M721                       |             |             |             |             |                  |            |            |                  |   |            |  |
| 722   | Light duty chip conveyor                | 12          | 6.625"      | 5 tooth     | 4.25" pd    | 1.1875"          | 5 tooth    | 4.25"      | 1.1875"          | 12ga aprons, 7/8" cleats on 12-1/2" centers   | Top        | Entire frame is 6-5/8" deep – Flat top cleats are 5/8" high        |
| 726   | Liquid tight M722                       |             |             |             |             |                  |            |            |                  |   |            |  |
| 725   | Low profile infeed chip conveyor        | 12          | 5.375"      | 5 tooth     | 4.25 pd     | 1.1875"          | 1.75" OD   | Hub        | .75"             | 12ga aprons, 7/8" cleats on 12-1/2" centers   | Top        | Frame tapers from 5-3/8" to 6-5/8" – Flat top cleats are 5/8" high |
| 727   | Tapered infeed cold header conveyor     | 12          | 6.625"      | 5 tooth     | 4.25 pd     | 1.1875"          | 5 tooth    | 4.25"      | 1.1875"          | 12ga aprons, 5/8" cleats on 12-1/2" centers   | Top        | Frame tapers from 6-5/8" to 4-1/8" back to 6-5/8"                  |

## Unit Weights (Shipping Weights – lbs.)

| BELT WIDTHS        | 4"   | 6"   | 8"   | 12"  | 18"  | 24"  |
|--------------------|------|------|------|------|------|------|
| <b>LENGTHS</b>     |      |      |      |      |      |      |
| 4'                 | 328  | 355  | 380  | 433  | 514  | 585  |
| 8'                 | 501  | 553  | 602  | 702  | 853  | 975  |
| 12'                | 710  | 788  | 862  | 1010 | 1232 | 1406 |
| 16'                | 883  | 986  | 1084 | 1279 | 1571 | 1796 |
| 20'                | 1056 | 1184 | 1306 | 1548 | 1910 | 2186 |
| 24'                | 1265 | 1419 | 1566 | 1856 | 2289 | 2617 |
| 28'                | 1438 | 1617 | 1788 | 2125 | 2628 | 3007 |
| ADD FOR EACH CURVE | 44   | 51   | 59   | 69   | 83   | 97   |

Conveyor weights include standard drive and supports. Other options, crating etc. are not included.

## Skid Dimensions

**Model 727** — Note: these are general guidelines for freight rate estimates only. Final dimensions may vary.

| BELT WIDTHS                  | 4"  | 6"  | 8"  | 12" | 18" | 24" | 30" | 36" |
|------------------------------|-----|-----|-----|-----|-----|-----|-----|-----|
| Top Mount <b>Skid Width</b>  | 16" | 18" | 20" | 24" | 30" | 36" | 42" | 48" |
| Side Mount <b>Skid Width</b> | 28" | 30" | 32" | 36" | 42" | 48" | 54" | 60" |

**Skid Length** – These units are typically shipped assembled. The skid length is the overall length + 5". Maximum skid length is 27'.