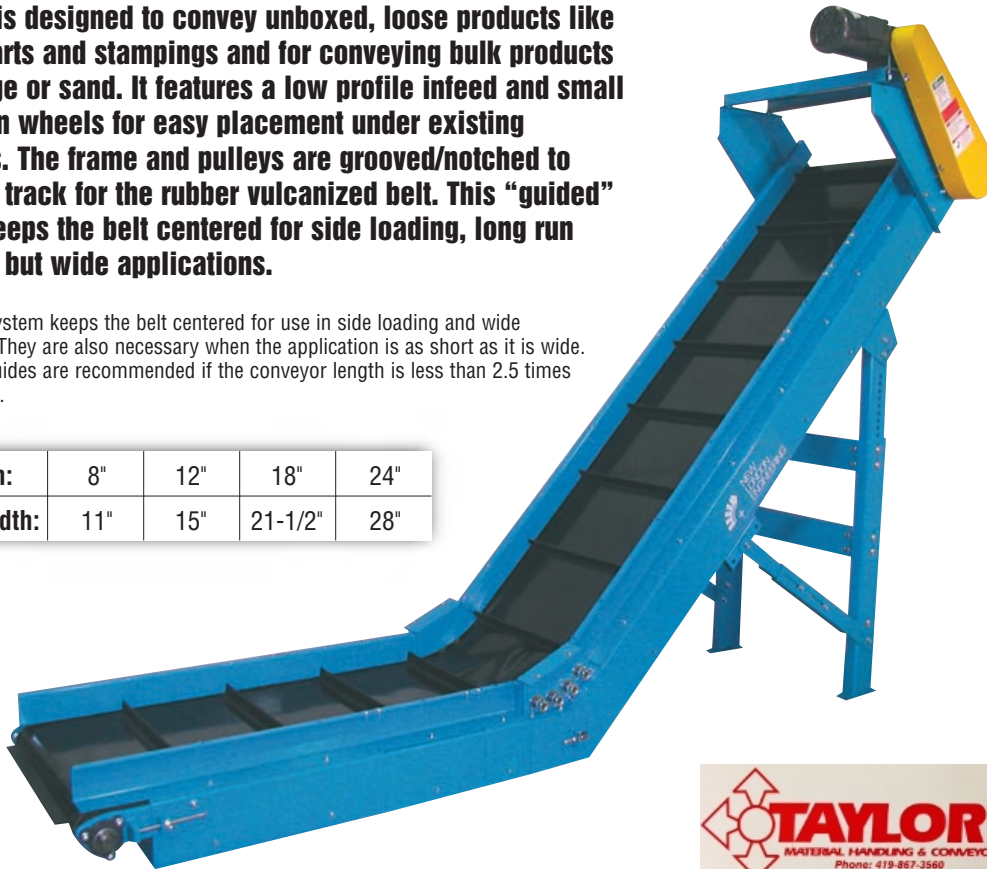


MODEL 361 Standard Duty V-Guided Type II, III & IV Conveyor**

This unit is designed to convey unboxed, loose products like plastic parts and stampings and for conveying bulk products like sludge or sand. It features a low profile infeed and small hold down wheels for easy placement under existing machines. The frame and pulleys are grooved/notched to provide a track for the rubber vulcanized belt. This "guided" system keeps the belt centered for side loading, long run and short but wide applications.

A V-guided system keeps the belt centered for use in side loading and wide applications. They are also necessary when the application is as short as it is wide. Typically V-guides are recommended if the conveyor length is less than 2.5 times the belt width.

Belt Width:	8"	12"	18"	24"
Frame Width:	11"	15"	21-1/2"	28"



Corrugated belt options are also available as shown on the next page

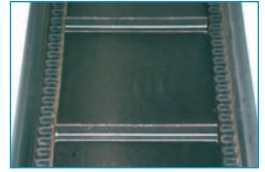


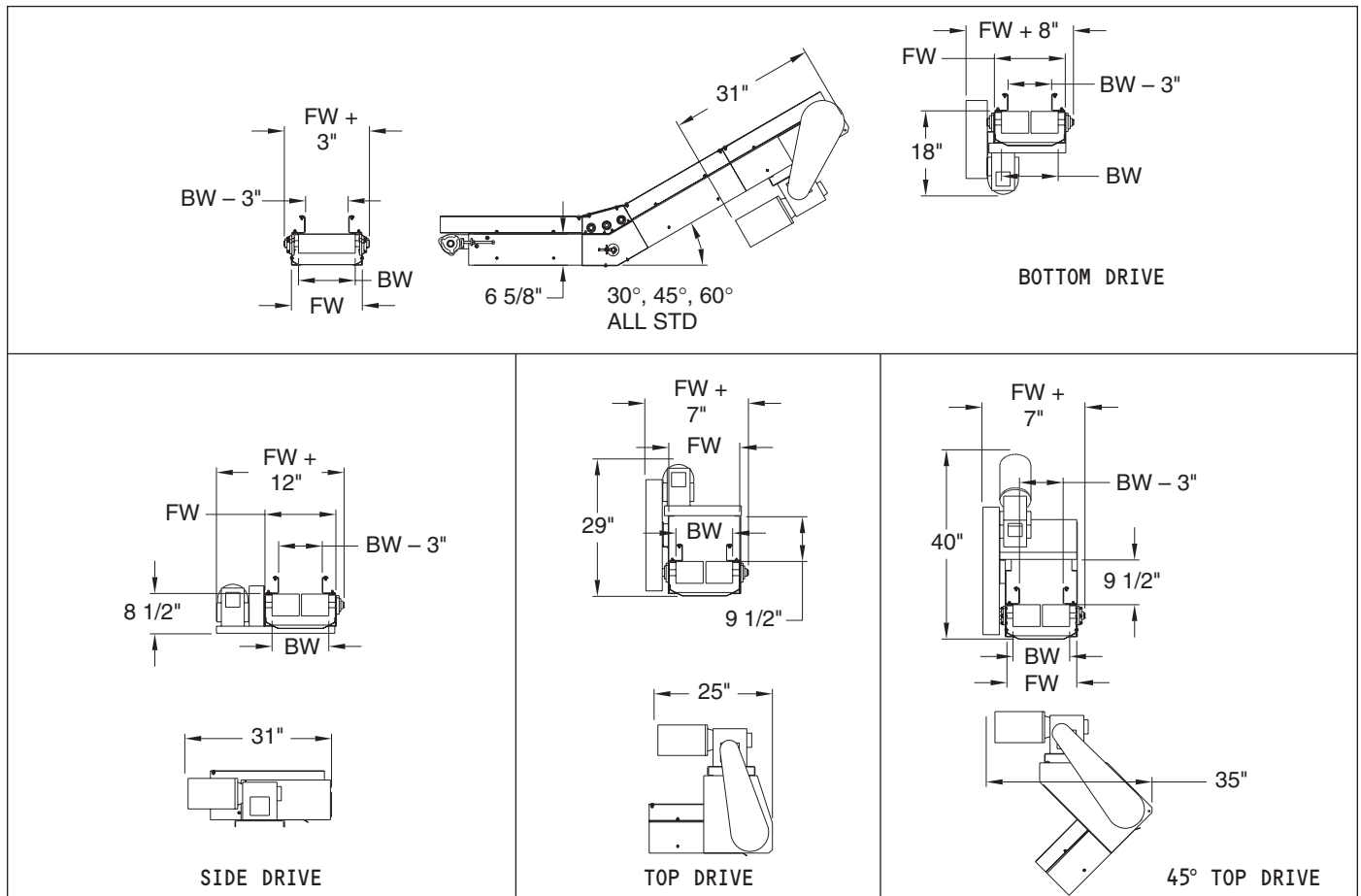
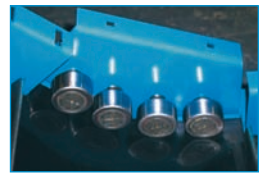
Photo of a V-Guided Belt and Frame



Hold Down Wheels Front View



Hold Down Wheels Inside of Frame View



MODEL 361 Standard Duty V-Guided Type II, III & IV Conveyor**

Standard Specifications

Widths: Up to 24"

Curves: 30, 45, 60 degree

Standard Motor: 1/3 HP 230/460/3/60 TEFC

Standard Drive: Top Mount, Right Side

Standard Belt: Black PVC 120 with 1-1/2" High Cleats on 12" Centers A – Section V-Guided, Clipper Lacing

Hold Down Wheels: 1-7/8" Dia x 3/4" Face Cams
30° = 3 Cams Per Side,
45° & 60° = 4 Cams Per Side

Drive Pulley: 4" Dia Flat Face Rubber Lagged x 1-3/16" x A Section V-Guided

Infeed Pulley: 4" Dia Crown Face Take Up x 1-3/16" x A Section V-Guided

Frame: 6-5/8" Deep x 12 Gauge

Standard Side Rails: 1-1/2" or 3-1/2" High

Standard Speed: 30 FPM

Inclined Conveyors Comparison Chart

Inclined Conveyors – "S" Shaped Units – Horizontal to Incline (Type II) – Horizontal to Incline to Horizontal (Type III) – Incline to Horizontal (Type IV) —

These units use cleated belts to carry loose, unpacked items like plastic parts, nuts & bolts and stampings from a horizontal position up an incline.

MODEL	DESCRIPTION	FRAME GAUGE	FRAME DEPTH	DRIVE PULLEY SIZE	DRIVE PULLEY TYPE*	DRIVE PULLEY SHAFT DIA.	INFEED PULLEY SIZE	INFEED PULLEY TYPE*	INFEED PULLEY SHAFT DIA.	STANDARD BELT	STD. DRIVE	OTHER
521	Light duty parts or bulk material handling conveyor	12	6.625"	4.5"	CFRL pulley	1.1875"	4"	CF pulley	1.1875"	3 ply RMV with 1-1/2" cleats on 12" centers 1-1/2" wall x 1" cleats for bulk applications	Top	- 1-1/2" or 3/12" side rails - 1-7/8" dia. x 3/4" face hold down wheels - 30°, 45° and 60° inclines std
361	Standard duty V-guided type II, III & IV conveyor**	12	6.625"	4.625"	FFRL "A" section	1.1875"	4.25"	FF "A" section	1.1875"	2 ply black PVC 120 with 1-1/2" cleats on 12" centers "A" section	Top	V-guided M521
590	Medium to heavy duty parts or bulk material conveyor	10	13"	8.625"	CFRL pulley	1.4375"	8"	CF pulley	1.4375"	- 2 ply 150 cross rigid x 3" cleats on 12" centers	Top	(2) 12" diameter x 2" wide deflection hold down wheels - 3" high wall x 2-1/2" cleats for bulk app.
591	Heavy duty parts or bulk material conveyor	10	13"	8.625"	CFRL pulley	1.6875"	8"	CF pulley	1.4375"	- 2 ply 150 cross rigid x 3" cleats on 12" centers	Top	- Heavy drive shaft M590 - (2) 12" diameter x 2" wide deflection hold down wheels - 3" high wall x 2-1/2" cleats for bulk app.

*BM = Bottom Mount; CF = Crown Faced; CDBM = Center Drive Bottom Mount; CH = Channel; FF = Flat Faced; RL = Rubber Lagged; RA = Right Angle; Std = Standard

**Type II = Horizontal to Incline; Type III = Horizontal to Incline to Horizontal; Type IV = Incline to Horizontal

Model 521, 361, 590 & 591 Worksheet

Model	General Guidelines	Hold Down Wheels	Minimum cleated belt recess per side = Belt Width x .10 Minimum corrugate belt recess per side = (Belt Width + Sidewall Height) x .10 Effective Width = Belt Width - (Recess + Corrugated wall width)
521 & 361	Maximum recommended length is 20'	45 & 60 degree (4) cams per side rather than (3)	Minimum belt recess = 3" per side
590 & 591	Consult NLE	(2) 12" hold down wheels	Corrugated wall width = 2" per side

Belt Width	MODEL 521 & 361 CLEATED ONLY				MODEL 521 & 361 CLEATED & SIDEWALLS			MODEL 590 & 591 CLEATED ONLY					MODEL 590 & 591 CLEATED & SIDEWALLS				
	8"	12"	18"	24"	12"	18"	24"	12"	18"	24"	30"	36"	14"	18"	24"	30"	36"
Effective Width	5"	9"	15"	21"	6"	12"	18"	6"	12"	18"	24"	30"	6"	8"	14"	20"	26"

*These are the maximum widths available. The M590 effective widths are for the standard belt with 3" high x 2-1/2" mini sidewall corrugation.

Unit Weights (Shipping Weights – lbs.)

BELT WIDTHS	8"	12"	18"	24"
LENGTHS				
4'	273	306	340	371
8'	328	380	433	484
12'	419	491	564	636
16'	474	565	657	749
20'	565	676	788	901
24'	620	750	881	1014
28'	711	861	1012	1166
Add For Each Curve	44	51	63	75

Conveyor weights include standard drive, supports and 1-1/2" high rails. Other options, crating etc. are not included.

Skid Dimensions

Model 361 —

Note: these are general guidelines for freight rate estimates only. Final dimensions may vary.

BELT WIDTHS	8"	12"	18"	24"
Bottom and Top Mount Skid Width	20"	24"	30"	36"
Shaft and Side Mount Skid Width	32"	36"	42"	48"

Skid Length – These units are typically shipped assembled. The skid length is the overall length + 12". Maximum skid length is 27'.