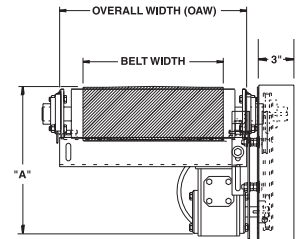


MODEL 450BOS BOX STYLE SLIDER BED BELT CONVEYOR W/ ROUND END PLATES

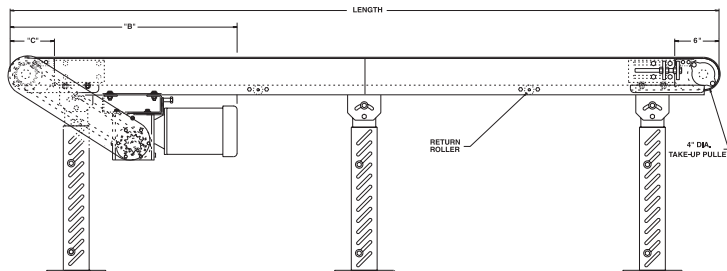
24 HOUR SHIPMENTS INCLUDE ALL 1-FOOT INCREMENTS 5'-0" TO 100'-0"



Conveyor shown with optional supports



Model 450BOS slider bed belt conveyor is one of the most popular and common means of transporting goods for packing, testing, inspecting and a variety of assembly line operations. 450BOS features a box style slider bed, ideal for workers stationed alongside the conveyor.



HP@ 60 FPM	"A" MAX		"B" MAX	
	4" DRV.	8" DRV.	4" DRV.	8" DRV.
1/3	13-13/16"	13-13/16"	29-3/32"	32-3/32"
1/2	13-13/16"	13-13/16"	29-3/32"	32-3/32"
3/4	14-3/16"	14-3/16"	29-23/32"	32-23/32"
1	14-1/2"	14-1/2"	30-15/32"	33-15/32"
1-1/2	15-9/16"	15-9/16"	32-19/32"	35-19/32"
2	16-7/16"	16-7/16"	33-19/32"	36-19/32"

SPECIFICATIONS

BELTING: PVC-120 black.

DRIVE PULLEY: 4" dia. with 1-3/16" dia. shaft or 8" dia. with 1-7/16" dia. shaft, both machine crowned and fully lagged, mounted in round style end plates.

TAIL PULLEY: 4" dia., machine crowned, with 1-3/16" dia. shaft, mounted in round style end plates.

END DRIVE: Allows one-direction (unit) operation; add optional center drive for reversible application.

TAKE-UP: Belt take-up provided at tail pulley with screw type unit.

BELT SPEED: 60 FPM, constant.

BED: 4-1/2" deep x 12 ga. box type construction with bed pan braces (30" OAW and above) and round style end plates.

BEARINGS: All pulley bearings are precision, heavy duty, lubricated, ball bearing units with cast iron housings.

RETURN ROLLERS: 1.9" dia. x 16 ga. steel, model 196S, adjustable.

MOTOR DRIVE: 1/3 HP, 230/460/3, 60 cycle, ODP right angle gear motor.

ROLLER CHAIN: Drive pulley is driven by No. 50 roller chain for 1-1/2 HP or less and No. 60 chain on larger drives. Chain take-up provided on motor base.

ELECTRICAL CONTROLS: Optional.

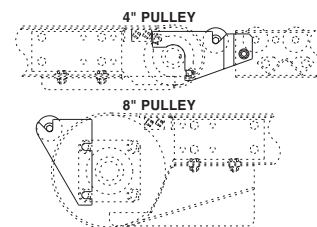
SPECIFICATIONS

CONSTRUCTION: Brackets are 10 ga. HRS painted steel and bolt at end of powered conveyor to butt couplings. Gravity conveyor attaches to connector bracket.

POP-OUT ROLLERS: Mounts into slot on bracket for safety design. Use of connector bracket eliminates dangerous pinch points.

CBOS-4-24

CBOS-(pulley diameter*)-(overall width)



⚠ WARNING

Prevent pinch points that exist when belt conveyors are permanently attached to other conveyors or equipment! Use connector brackets with safety pop out rollers shown above.



SPECIFICATION TABLE

50'-0" lengths and under are equipped with 4" dia. drive pulley; over 50'-0" includes 8" dia. drive pulley

■ 24 hour shipment ■ 2 week shipment

CONVEYOR LENGTH		10'	20'	30'	40'	50'	60'	70'	80'	90'	100'	DEDUCT
BELT	BED	UNIT WEIGHTS (lbs.)										PER FOOT
6"	10"	203	295	387	479	571	663	755	847	939	1031	9
12"	16"	263	395	528	660	793	925	1058	1190	1323	1455	13
18"	22"	323	496	669	842	1015	1188	1361	1534	1706	1879	17
24"	28"	383	596	810	1023	1237	1450	1663	1877	2090	2304	21
30"	34"	443	697	951	1205	1458	1712	1966	2220	2474	2728	25
36"	40"	503	797	1092	1386	1680	1975	2269	2563	2858	3152	29

OPTIONAL EQUIPMENT

BELTING: Black PVC ruff-top; 3-ply brown neoprene ruff-top; PVC-120 white food grade COS; PVC-150 black COS; 3-ply CN 40 urethane cover. Consult factory for other belting.

CENTER DRIVE: Reversible drive with integral belt take-up of 24". Specify location. Center drive option available on units 6'-0" long and above.

SIDE MOUNTED END DRIVE: Provides minimum conveyor height of 10" TOB (4" dia. drive pulley); 11" TOB (8" dia. drive pulley).

OVERHEAD END DRIVE: Provides minimum conveyor height of 6" TOB (4" dia. drive pulley); 10" TOB (8" dia. drive pulley).

AUXILIARY TAKE-UP: Provides 24" of belt take-up. Specify location. See Power Accessories.

SIDE TABLES: Available in 9", 15" and 21" widths (14 ga.) one or both sides. See Power Accessories.

FLOOR SUPPORTS: Supports, knee braces, casters and polytier supports available. See Conveyor Accessories.

NOSE-OVER: Provides smooth transition from incline to horizontal position. Single nose-over adjusts 0-20°; double nose-over adjusts 0-35°. See Power Accessories.

UNDERTRUSSED BED: Available to provide clearance underneath unit at bed joint locations. Specify location for undertrussing and desired clearance underneath unit. Consult factory.

CEILING HANGERS: 5/8" dia. threaded rod with hardware to attach rods to conveyor. Provides 6' clearance between ceiling and TOB (furnished in place of floor supports). See Conveyor Accessories.

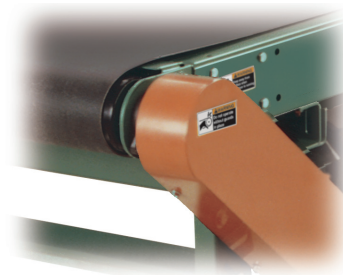
MOTORS: Available through 3 HP in TEFC, explosion proof, dirty duty, brake motor, 115/230/1, 575/3, etc.

GUARD RAILS: 1-3/4" x 1" formed channel (model GC), adjusts horizontally to 10" wider than belt and vertically to 6" above belt; formed steel fixed (model FSG in 2", 4", 6", 8", 12", and 18" heights; fixed channel (model FC); 1-1/2" angle (model GA1-1/2). See Conveyor Accessories.

BELT SPEED: Constant speed 10-120 FPM; DC variable speed; AC inverter variable speed. Other constant or variable speeds available.

NOTE: CAPACITY CHANGES WITH SPEED.

ELECTRICAL CONTROLS: Magnetic starter (one direction or reversible); One direction manual starter; Momentary start/stop push button station; Forward/reversing /stop push button station. Mounting and pre-wiring for units up to 12' long.



4" END DRIVE WITH ROUND END PLATES

