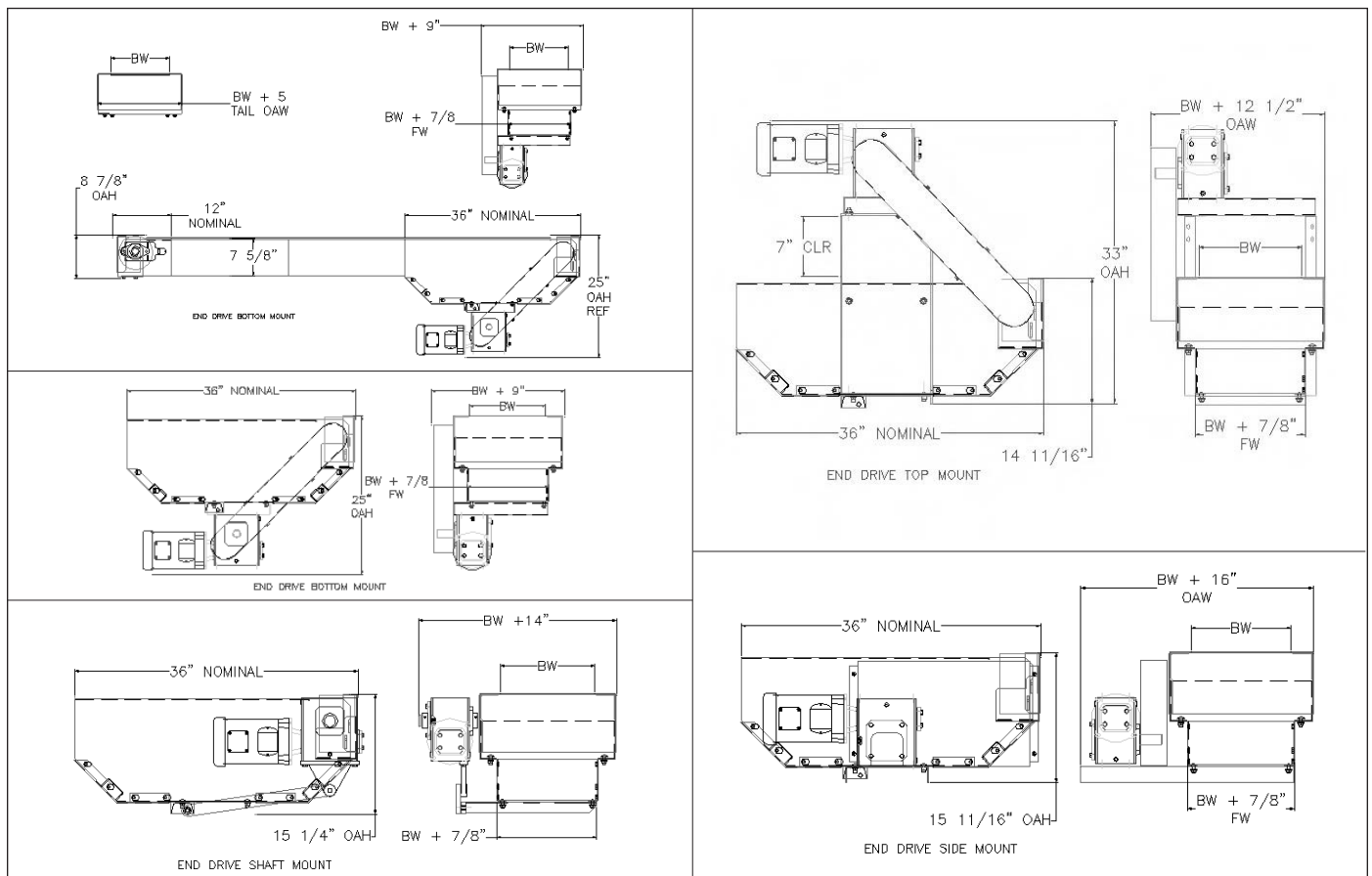


MODEL 2000-C Curved Plastic Belt Conveyors

The Model 2000-C (C = Curved) is used in applications that require right hand or left hand curves.



For a larger version of a drawing or to print a copy see our website at WWW.NLECO.COM and click on DRAWINGS

Model 2000-C Specifications

Frame: 10 Gauge x 7-5/8" Deep

Frame Width: $BW + 7/8$ "

Frame Spreaders: 10 Gauge Formed Channel

Shafts: 1-1/2" Square Shafts

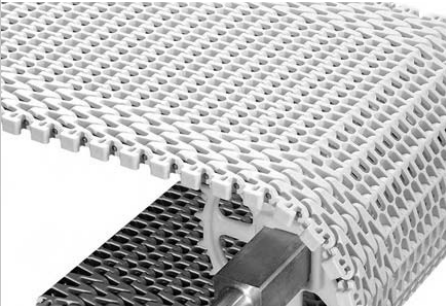
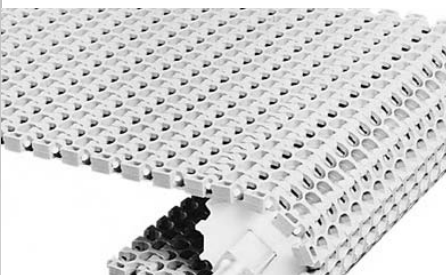
Return Rollers: 2-1/2" Diameter x 11/16" Hex

Wear Strips: Available in Both Straight and Chevron Style Arrangements

Other: ACT System (Application Change Technology) see page 135

Model 2000-C Belts for Curved Applications

Flush Grid Belts – The flush grid belt’s open surface makes them ideal for use in applications where air flow and drainage are required. Because there is less surface contacting products, there is less friction, so flush grid belts can also be used for slight accumulation and lateral movement applications. A flush grid belt is **not** recommended when the product is very small or has an uneven surface because these products may get caught in the flush grid belt’s open space.

INTRALOX BELT SERIES	PRIMARY APPLICATIONS	TYPICAL APPLICATIONS AND PRODUCTS
<p>2400 Flush Grid</p> 	<p>Used in light to medium duty curved or side flexing applications. This belt is available in both a 2.2 turning radius and 1.7 tight turning radius***.</p> <p>The small 1" pitch design facilitates tight conveyor-to-conveyor transfers especially for small delicate products.</p>	<p>This belt’s low chordal action* and smooth operation is ideal for conveying all sorts of lightweight packaged products like candy or bakery and boxes filled with light products like napkins or toilet paper. It is also ideal for short stacks of paper and tubs filled with empty plastic containers.</p>
<p>2200 Flush Grid</p> 	<p>Used in medium to heavy duty curved or side flexing applications.</p> <p>This strong 1.5" pitch belt is exceptionally durable and robust belt is ideal for conveying heavy products. Available in 2.2 turning radius*** only.</p>	<p>Used to convey all sorts of boxes filled with heavier products like filled cans, plastic containers, bottles and jars. This belt can also be used to carry larger/taller stacks of paper, cardboard or containerboard and filled pallets.</p>

Belt Specifications (*) (**) See Definition Page on page 136



INTRALOX BELT SERIES	PRICE COMPARED TO ALL M2000 BELTS**	PRICES COMPARED TO BELTS IN THIS TABLE**	BELT MATERIAL	BELT PITCH	TURNING RADIUS
2400 Flush Grid	\$\$	\$	PP*	1"**	1.7 & 2.2
2200 Flush Grid	\$\$	\$	PP*	1.5**	2.2

***The turning radius is the minimum radius required for the belt to make the turn. It is calculated by multiplying the belts rated turning radius by its width. For example, a 24" wide Series 2200 x 2.2 Turning Radius belt requires a minimum inside turning radius (measured from edge of conveyor) of 52.8 inches (24 x 2.2 = 52.8 inches).

Common Belt Options:

Sanoprene Friction Surfaces & Flights: A sanoprene molded rubber surface or a flight can be attached to the belt to prevent slippery (wet or oily) products from sliding off the belt while traveling through the curve. (Similar to friction top – see M2000-N).

Sideguards: Sideguards are used to prevent product from slipping off the belt while traveling through the curve area. Standard sideguards can also be used when products must be separated while being transported.

BELT	UNIVERSAL SIDEGUARDS	CLIP-ON SIDEGUARDS
<p>Series 2200 & Series 2400 Flush Grid</p> <p>1 & 3" high sideguards are available</p> <p>A 2.2 turning radius belt requires a 1.5" indent. The 1.7 turning radius belt requires a 3.0" indent.</p>		<p>.75" high clip on sideguards (Available with the series 2400 belt only)</p> <p>The required indent for a clip on sideguard is .6" compared to 1.5" – 3" for a universal sideguard. This feature allows for more of the belt surface to be used for product conveyance.</p>  <p>(Shown in bottom of photo)</p>