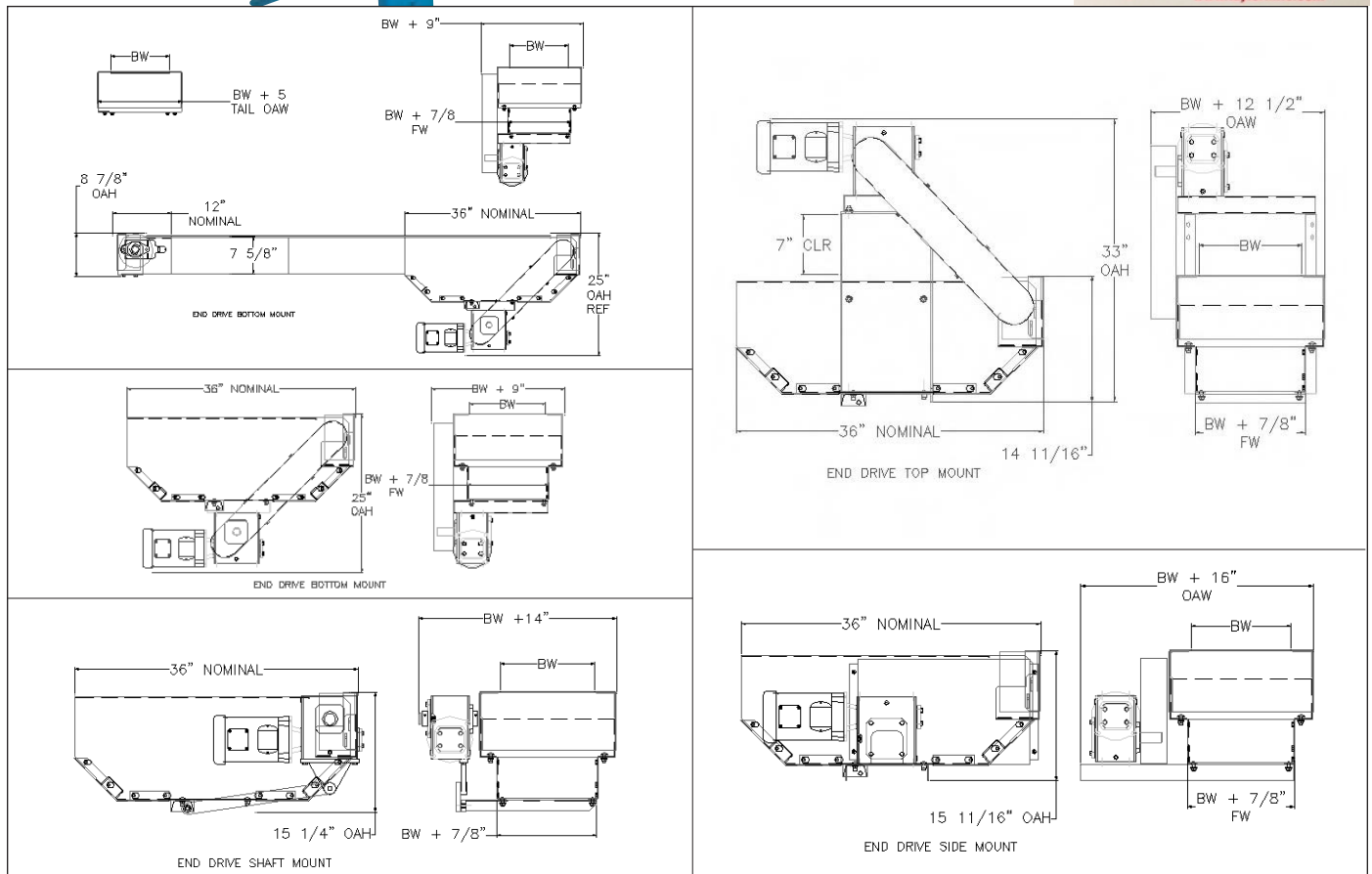


MODEL 2000-S Straight Running Horizontal Plastic Belt Conveyors

(These pages show the Model 2000-S with general transport very economical belt choices)



The Model 2000-S (S = Straight Running) is designed for straight running applications. This unit is capable of supporting various styles of plastic belts designed to handle general transport applications in light duty production and packaging operations.



For a larger version of a drawing or to print a copy see our website at WWW.NLECO.COM and click on **DRAWINGS**

Model 2000-S Specifications

Frame: 10 Gauge x 7-5/8" Deep

Frame Width: BW + 7/8"

Frame Spreaders: 10 Gauge Formed Channel

Shafts: 1-1/2" Square Shafts

Return Rollers: 2-1/2" Diameter x 11/16" Hex

Wear Strips: Available in Both Straight and Chevron Style Arrangements

Other: ACT System (Application Change Technology)
see page 135

MODEL 2000-S Straight Running Horizontal Plastic Belt Conveyors

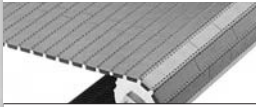





General Transport Belt Options

Model 2000-S

Standard Belts for Use in Straight Running General Transport Economical Applications

Flat Top Belts – This belt's smooth, flat and totally closed surface is ideal for conveying small products that may get caught in the open surface of a flush grid. Also used in applications where product tipping or falling may be a problem.

Flush Grid Belts – The flush grid open surface is ideal for applications where air flow or liquid drainage are required. Flush grid belts are lighter than flat top belts, which make them more suitable for long, wide conveyor runs. Because there is less surface contacting products, friction is reduced so flush grid belts can also be used for slight accumulation and lateral movement applications. A flush grid belt is **not** recommended when the product is very small or has an uneven surface because these products may get caught in the flush grid belt's open areas. They are also 3-5% cheaper than flat tops.

INTRALOX BELT SERIES	PRIMARY APPLICATIONS	TYPICAL APPLICATIONS AND PRODUCTS
 900 Flat Top	Ideal for transporting lightweight products over fairly long distances where light impact is possible. The 1.07" pitch facilitates tight conveyor-to-conveyor transfers and produces low chordal action* for smoother operation at higher conveyor speeds.	This low chordal action* belt is ideal for very small and delicate products and where tipping or falling may cause a problem. This belt is ideal for individually filled cans, bottles, plastic containers, light cases, boxes or totes as well as delicate products like glassware and lightly stacked items like reams of paper or napkins.
 900 Flush Grid		
 1400 Flat Top	Used to convey medium to heavy weight products. This thick, strong belt is good for high impact applications and long and wide conveyors. This belt is unique in that it has a small pitch which results in minimal chordal* action, yet it has a robust .5" thickness resulting in an extremely durable belt good for everything from light products with tight transfers to medium to heavy products in high impact applications.	Typical products conveyed on the series 1400 belt range from medium weight products like individually filled cans, bottles or plastic containers and stacks of paper to heavier products like stacks of lumber or containerboard and loaded shipping pallets and cases.
 1400 Flush Grid		
 400 Flat Top	This extremely thick and strong 2" pitch belt is ideal for heavy duty, high impact applications and exceptionally long, wide conveyor runs carrying heavy products.	Used to convey heavy products like furniture, loaded pallets, appliances, large paper rolls, millwork, heavy batteries and stacks of wallboard.
 400 Flush Grid		



Belt Specifications (*) (**) See Definition Page on page 136

INTRALOX BELT SERIES	PRICE COMPARED TO ALL M2000 BELTS**	PRICES COMPARED TO BELTS IN THIS TABLE** (900 – 1400 – 400)	BELT MATERIAL*	BELT PITCH*	BELT THICKNESS
900 Flat Top	\$	\$\$	PP	1.07"	.385"
900 Flush Grid	\$		PP	1.07"	.385"
1400 Flat Top	\$\$	\$\$\$	PP	1.00"	.500"
1400 Flush Grid	\$\$		PP	1.00"	.500"
400 Flat Top	\$\$	\$\$\$\$	PP	2.00"	.625"
400 Flush Grid	\$\$		PP	2.00"	.625"

**See page 136