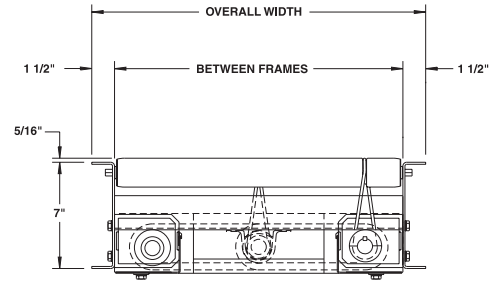
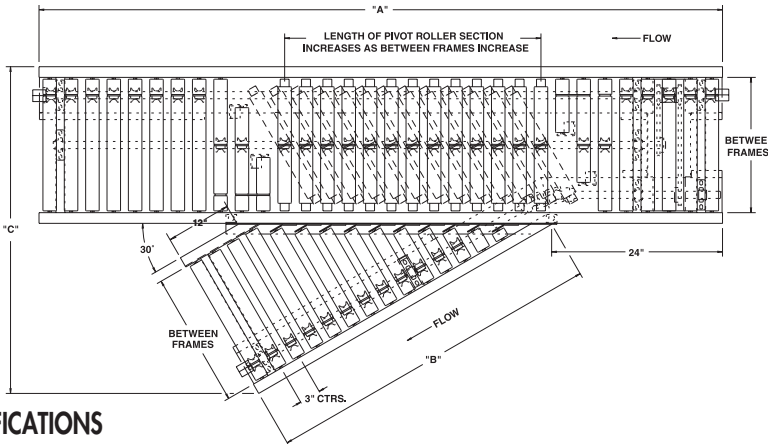


# MODEL 796LSDS LINE SHAFT DIVERGING SWITCH MODULE



Conveyor shown with optional supports

796LSDS is used in diverging applications where line shaft conveyor is suitable. The pivot section of rollers, pneumatically actuated, skews to divert packages onto spur quickly and efficiently.



### OPTIONAL EQUIPMENT

**FLOOR SUPPORTS:** Supports, knee braces, casters, polytier supports & ceiling hangers available. See Conveyor Accessories.

**GUARD RAILS:** 1-3/4" x 1" formed channel (model GC), adjusts horizontally to 8" wider than roller and vertically to 6" above roller; formed steel fixed (model FSG in 2", 4" and 6" heights; fixed channel (model FC); 1-1/2" angle (model GA1-1/2). See Conveyor Accessories.

### SPECIFICATIONS

**TREAD ROLLERS:** 1.9" dia. x 16 ga. steel, model 196S grooved.

**DRIVE BELT:** 3/16" dia., polyurethane belts. Nominal 15 lbs. per roller drive.

**DRIVE SHAFT:** 1" dia. C1018 cold rolled steel shaft. NOTE: Spools in spur and spools in pivot roller section are keyed to provide positive drive (designed not to slip on drive shaft).

**COUPLINGS:** Couplings located both ends or one end only. Specify where couplings required.

**BED:** 7" x 1-1/2" x 12 ga. formed steel channel frame. Short side of spur is always 12" overall length.

**ROLLER CHAIN:** Spur driven via cross-over with No. 40 chain.

**BEARINGS:** Precision, lubricated, ball bearing units with composite housings.

**PNEUMATICALLY ACTUATED:** Diverging section of rollers is pneumatically actuated utilizing 60PSI maximum.

**MOTOR DRIVE:** Unit is designed to be driven by 796LS.

**DIRECTION OF FLOW:** Specify right hand or left hand. To determine hand of spur, refer to pg. 136 in technical section.

**MINIMUM PACKAGE SIZE:** Consult factory for minimum package size (minimum size may vary based on conveyor width).

BF	"A"	"B"	"C"	WT. (lbs.)
15"	6'-0"	40-7/8"	38-3/8"	290
19"	8'-0"	47-3/4"	45-7/8"	310
21"	8'-0"	51-1/4"	49-5/8"	325
25"	8'-0"	58-1/8"	57-1/8"	380
27"	8'-0"	61-5/8"	60-3/4"	526
33"	10'-0"	72"	72"	586
39"	10'-0"	82-3/8"	83-1/4"	678

**NOTE:** This unit is not designed for high-rate sortation. Consult factory for high-rate applications.



■ 4 week shipment