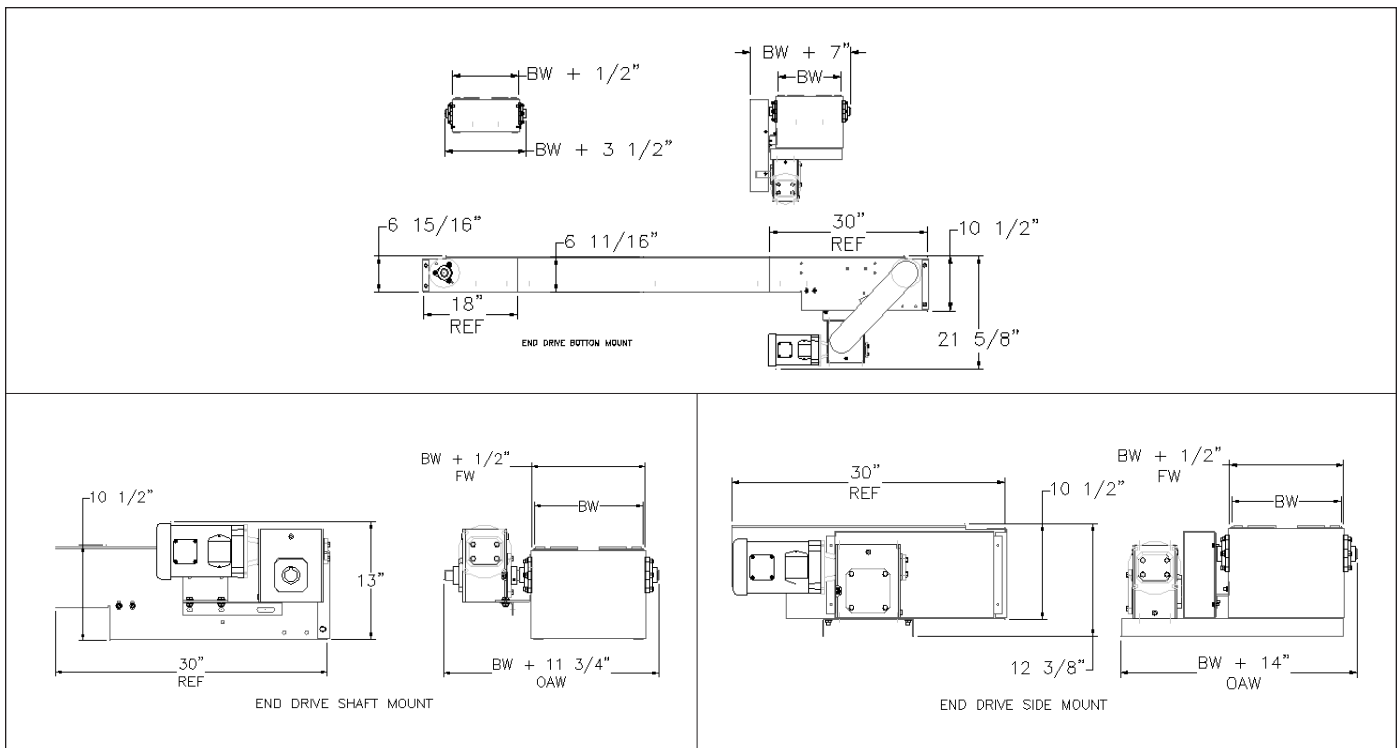
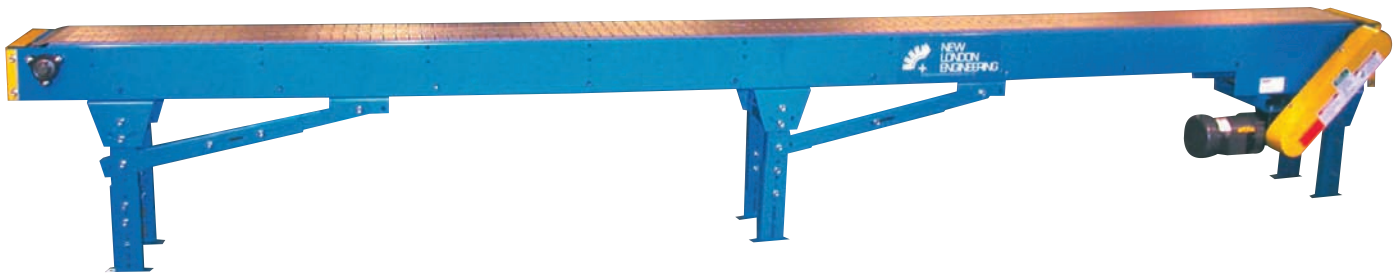


# MODEL 1000-S Straight Running Horizontal Plastic Chain Conveyors

(These pages show the Model 1000-S with belts for straight running applications)

**The Model 1000-S (S=Straight Running) is designed for straight running applications. This unit is capable of supporting various styles of plastic chains and metal chains. This conveyor is used to carry lighter weight products common in bottling operations, dairies and pharmaceutical plants.**



For a larger version of a drawing or to print a copy see our website at [WWW.NLECO.COM](http://WWW.NLECO.COM) and click on DRAWINGS

## Model 1000-S Specifications

**Frame:** 12 Gauge x 6-11/16" Deep

**Frame Width:** BW + 1/2"



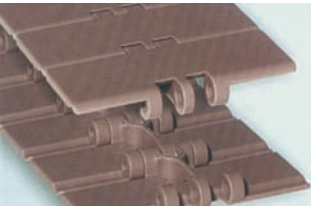

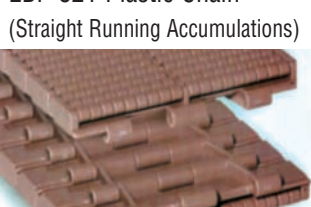
**Frame Spreaders:** 12 Gauge Formed Angle

**Shafts:** 1-3/16" Round Shafts

**Return Rollers:** 2" Diameter x 7/16" Hex

**Wear Strips:** Straight Arrangements

# MODEL 1000-S Straight Running Horizontal Plastic Chain Conveyors

CHAIN NUMBER	APPLICATIONS AND CHAIN QUALITIES
 <p>815 Stainless Steel Chain</p>	<p>This non-magnetic chain has excellent acid, corrosion and abrasion resistance properties. The austenitic stainless steel used in this chain also provides more heat resistance than carbon steel (up to 800 degrees dry vs. carbon steel's 350 degrees). This chain is commonly used to convey products like glass containers, hot metal parts and other parts where water or lubricants are present.</p>
 <p>815 Carbon Steel Chain</p>	<p>This is a strong, abrasion resistant, fine grained, hardened carbon steel chain. This chain is built for applications where the chain is subjected to very abrasive conditions due to the environment or product surfaces. It is used to convey irregularly shaped products such as castings and machined steel parts and other applications that require the high strength and impact resistance of a hardened chain.</p>
 <p>820 Plastic Chain</p>	<p>This low cost, all purpose chain is available in a wide range of chain widths. This chain is the ideal choice for dry, straight running applications. The lightweight qualities of this thin chain also permits use with faster operating speeds.</p>
 <p>821 Plastic Chain</p>	<p>This thicker plastic chain is a bit more expensive than the 820 series but it is capable of handling a wider range of products with higher live loads. All in all, this is still a low cost alternative chain compared to competitors in its class.</p>
 <p>LBP 821 Plastic Chain (Straight Running Accumulations)</p>	<p>This chain uses rollers to reduce friction for accumulation applications. Its small, closely spaced rollers are ideal for accumulating products with a small footprint like bags of snacks and candy as well as irregular shaped items like magazines or newspapers.</p>

## Straight Running Chain Specifications

CHAIN #	MATERIAL	PRICE COMPARED TO M1000 BELTS**	OTHER PRICE COMPARISONS	CHAIN THICKNESS	CHAIN STRENGTH (LBS.)	AVAILABLE CHAIN WIDTHS
815	Stainless Steel	\$\$\$	The 815 carbon steel is about half the price of 815 stainless steel	.12	.625	2-1/4", 2-5/8", 3-1/4", 4, 4-1/4", 6, 7-1/2"
815	Carbon Steel	\$\$		.12	.625	
820	Plastic	\$	The 820 chain is about 20% less expensive than the 821 chain	.16	.365	3-1/4", 4, 4-1/2", 6, 7-1/2"
821	Plastic	\$\$		.19	.625	
LBP821	Plastic	\$\$\$\$\$	The LBP 821 is about 10% more expensive than the LBP 882.	.54	.625	7-1/2", 10, 12"

\*\* See page 136