

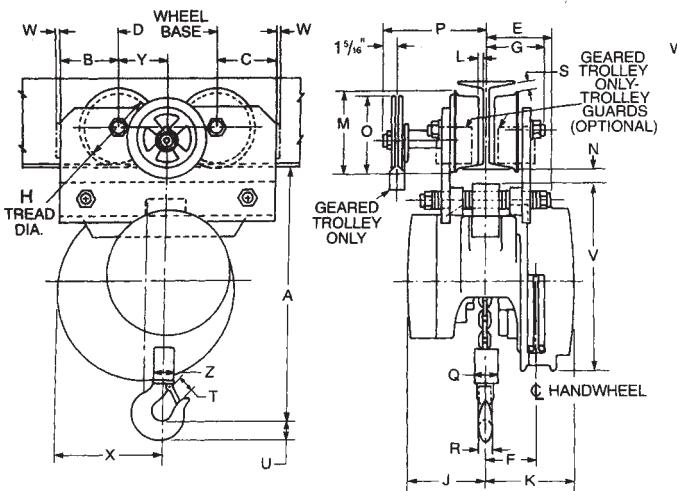
Yale Load King LTP2, LTG2 Army Type Trolley Hoist

Capacity range: 1/4–12 ton

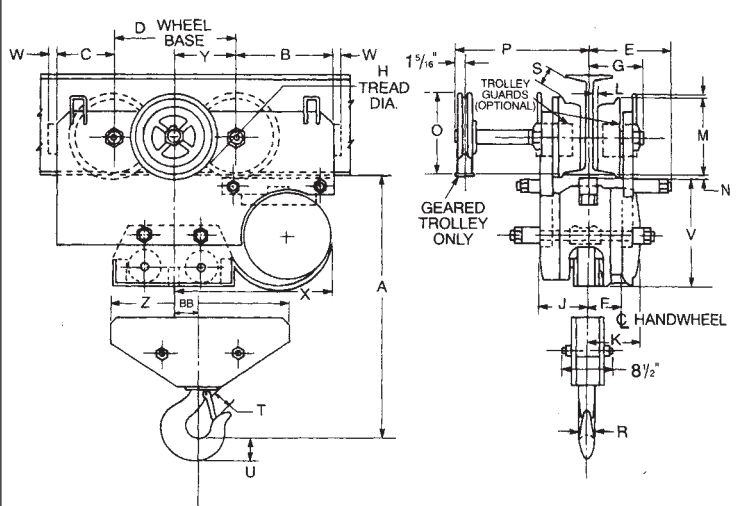


Same quality and performance as the Load King LH2 in a compact, low headroom integral trolley mount. Ideal for applications requiring a moveable hoist including:

- Rugged steel loadbars connected directly to hoist frame
- Reduced headroom., side clearances and end approach for easy maneuvering of heavy loads in tight places
- Standard Load Limiter automatic overload protection
- Plain and geared trolley mounts in capacities from 1/4 to 12 tons
- Universal tread trolley wheels for operation on sloped or flat flanged beams
- Standard hand chain drop 2 feet less than lift (example: 8 foot lift hoist has 6 foot hand chain drop)
- Chain containers, zinc-plated load and hand chain, aluminum unwelded hand chain, Latchlok hooks, bronze hooks, bullard hooks, larger beam trolleys, trolley guards, and units without Load Limiter optional, depending on capacity
- Lifetime warranty
- Metric rated
- Made in U.S.A.



1/4–6 Ton



8–12 Ton

Specifications

| Rated Capacity* (Tons) | Product Code | | Standard Lift (ft.) | Reeving | American Standard depth (in.) † | Beam Adjustment Ranges Flange Width (in.) † | Chain Pull to Lift Full Load | Chain Overhauled to Lift Load One Foot (ft.) | Minimum Headroom (in.) | Minimum Radius Curve (in.) | Shipping Weight (lbs.) | |
|------------------------|--------------------|---------------------|---------------------|---------|---------------------------------|---|------------------------------|--|------------------------|----------------------------|------------------------|----------------|
| | LTP2 Plain Trolley | LTG2 Geared Trolley | | | | | | | | | Plain Trolley | Geared Trolley |
| 1/4 | 925-01400 | 925-01500 | 8 | 1 | 4-12 ** | 2 5/8-5 1/2 | 23 | 22 1/2 | 11 3/4 | 30 | 66 | 108 |
| 1/2 | 925-03400 | 925-03500 | 8 | 1 | 4-12 ** | 2 5/8-5 1/2 | 46 | 22 1/2 | 11 3/4 | 30 | 66 | 108 |
| 1 | 925-05400 | 925-05500 | 8 | 1 | 4-12 ** | 2 5/8-5 1/2 | 69 | 30 | 11 3/4 | 30 | 78 | 130 |
| 1 1/2 | 925-06400 | 925-06500 | 8 | 1 | 6-15 | 3 3/8-5 5/8 | 80 | 40 1/2 | 15 5/16 | 30 | 136 | 164 |
| 2 | 925-07400 | 925-07500 | 8 | 1 | 6-15 | 3 3/8-5 5/8 | 83 | 52 | 15 5/16 | 30 | 136 | 164 |
| 3 | 925-09400 | 925-09500 | 8 | 2 | 7-15 | 3 3/8-5 5/8 | 85 | 81 | 8 7/8 | 48 | 182 | 230 |
| 4 | 925-11400 | 925-11500 | 8 | 2 | 7-15 | 3 3/8-5 5/8 | 87 | 104 | 18 7/8 | 48 | 182 | 230 |
| 5 | 925-13400 | 925-13500 | 8 | 3 | 8-18 | 4-6 1/4 | 74 | 156 | 23 1/2 | 60 | 268 | 300 |
| 6 | 925-14400 | 925-14500 | 8 | 3 | 8-18 | 4-6 1/4 | 89 | 156 | 24 | 60 | 273 | 305 |
| 8 | 925-16400 | 925-16500 | 8 | 4 | 12-24 | 5-8 | 91 | 208 | 28 1/4 | 72 | 506 | 589 |
| 10 | 925-17400 | 925-17500 | 8 | 5 | 12-24 | 5-8 | 93 | 260 | 28 1/4 | 72 | 513 | 596 |
| 12 | 925-18400 | 925-18500 | 8 | 6 | 12-24 | 5 1/2-8 | 95 | 312 | 30 3/8 | 96 | 1050 | 1130 |

**For 1/4 through 1 ton geared trolleys—minimum beam size S6 x 12.5 (3 3/8 flange width)

† Universal tread trackwheels designed to operate on either sloped or flat flange beams, rails, or tracks

Clearance Dimensions (in.)

| Dimension | Rated Capacity* (tons) | | | | | | | | | | | | | | | |
|-----------|------------------------|----------|-----------|---------|---------|---------|----------|----------|----------|----------|----------|----------|---------|---------|----------|----------|
| | 1/4, 1/2, & 1 | | 1 1/2 & 2 | | 3 & 4 | | 5 | | 6 | | 8 | | 10 | | 12 | |
| | Plain | Geared | Plain | Geared | Plain | Geared | Plain | Geared | Plain | Geared | Plain | Geared | Plain | Geared | Plain | Geared |
| A | 11 3/4 | 11 13/16 | 15 5/16 | 15 5/16 | 18 7/8 | 18 7/8 | 23 1/2 | 23 1/2 | 24 | 24 | 28 1/4 | 28 1/4 | 28 1/4 | 28 1/4 | 30 3/8 | 30 3/8 |
| B | 4 3/16 | 4 3/8 | 3 11/16 | 3 11/16 | 5 3/4 | 5 3/4 | 6 1/2 | 6 1/2 | 6 1/2 | 6 1/2 | 8 15/16 | 8 15/16 | 8 15/16 | 8 15/16 | 10 7/8 | 10 7/8 |
| C | 2 9/16 | 2 9/16 | 3 11/16 | 3 11/16 | 3 7/16 | 3 7/16 | 3 3/4 | 3 3/4 | 3 3/4 | 3 3/4 | 5 1/4 | 5 1/4 | 5 1/4 | 5 1/4 | 7 3/16 | 7 3/16 |
| D | 6 | 6 | 6 | 6 | 6 7/8 | 6 7/8 | 7 3/4 | 7 3/4 | 7 3/4 | 7 3/4 | 11 | 11 | 11 | 11 | 11 | 11 |
| E | 4 1/2 | 4 15/16 | 5 | 5 | 5 7/16 | 5 7/16 | 6 1/8 | 6 1/8 | 6 1/8 | 6 1/8 | 7 1/4 | 7 1/4 | 7 1/4 | 7 1/4 | 7 1/4 | 7 1/4 |
| F | 2 1/16 | 2 1/16 | 3 3/8 | 3 3/8 | 3 | 3 | 21 13/16 | 21 13/16 | 21 13/16 | 21 13/16 | 3 | 3 | 3 | 3 | 3 | 3 |
| G | 3 | 3 3/4 | 3 3/8 | 3 3/4 | 4 5/16 | 4 5/16 | 4 15/16 | 4 15/16 | 4 15/16 | 4 15/16 | 5 9/16 | 5 9/16 | 5 9/16 | 5 9/16 | 5 13/16 | 5 13/16 |
| H | 3 1/8 | 4 | 4 3/4 | 4 | 5 | 5 | 6 | 6 | 6 | 6 | 8 | 8 | 8 | 8 | 8 | 8 |
| J | 3 1/4 | 3 3/4 | 4 13/16 | 4 13/16 | 4 13/16 | 4 13/16 | 5 | 5 | 5 | 5 | 4 13/16 | 4 13/16 | 4 13/16 | 4 13/16 | 4 13/16 | 4 13/16 |
| K | 4 1/8 | 4 1/8 | 5 1/16 | 5 1/16 | 5 1/16 | 5 1/16 | 4 7/8 | 4 7/8 | 4 7/8 | 4 7/8 | 5 1/16 | 5 1/16 | 5 1/16 | 5 1/16 | 5 1/16 | 5 1/16 |
| L | 5 1/8 | 5 1/8 | 1/2 | 5/16 | 1/4 | 1/4 | 3/8 | 3/8 | 3/8 | 3/8 | 1/2 | 1/2 | 1/2 | 1/2 | 1 1/16 | 1 1/16 |
| M | 4 | 4 3/4 | 5 5/16 | 4 3/4 | 5 7/8 | 5 7/8 | 7 | 7 | 7 | 7 | 9 7/16 | 9 7/16 | 9 7/16 | 9 7/16 | 9 1/2 | 9 1/2 |
| N | 1/2 | 9/16 | 9/16 | 9/16 | 1 1/16 | 1 1/16 | 1 1/16 | 1 1/16 | 1 1/16 | 1 1/16 | 1/2 | 1/2 | 1/2 | 1/2 | 7/16 | 7/16 |
| O | — | 5 9/16 | — | 5 9/16 | 6 1/8 | 6 1/8 | 6 3/4 | 6 3/4 | 6 3/4 | 6 3/4 | 7 9/16 | 7 9/16 | 7 9/16 | 7 9/16 | 7 9/16 | 7 9/16 |
| P | — | 10 | — | 10 | 8 15/16 | 8 15/16 | 10 7/16 | 10 7/16 | 10 7/16 | 10 7/16 | 11 7/16 | 11 7/16 | 11 7/16 | 11 7/16 | 11 11/16 | 11 11/16 |
| Q | 2 | 2 | 2 1/2 | 2 1/2 | 3 7/8 | 3 7/8 | 4 | 4 | 4 | 4 | 11 15/16 | 11 15/16 | — | — | — | — |
| R | 1 1/16 | 1 1/16 | 1 1/8 | 1 1/8 | 1 1/4 | 1 1/4 | 1 1/4 | 1 1/4 | 1 3/8 | 1 3/8 | 1 13/16 | 1 13/16 | 1 13/16 | 1 13/16 | 2 3/8 | 2 3/8 |
| S | 1 1/8 | 1 5/16 | 3/16 | 1 5/16 | 1 5/8 | 1 5/8 | 3/4 | 3/4 | 3/4 | 3/4 | 2 3/16 | 2 3/16 | 2 3/16 | 2 3/16 | 5 1/8 | 5 1/8 |
| T | 1 | 1 | 1 3/8 | 1 3/8 | 1 5/8 | 1 5/8 | 1 5/8 | 1 5/8 | 1 3/4 | 1 3/4 | 2 5/16 | 2 5/16 | 2 5/16 | 2 5/16 | 3 | 3 |
| U | 7/8 | 7/8 | 1 1/8 | 1 1/8 | 1 11/16 | 1 11/16 | 1 11/16 | 1 11/16 | 1 7/8 | 1 7/8 | 2 9/16 | 2 9/16 | 2 9/16 | 2 9/16 | 3 | 3 |
| V | 10 1/8 | 10 1/8 | 11 3/8 | 11 3/8 | 11 3/8 | 11 3/8 | 11 3/8 | 1 5/8 | 11 3/8 | 11 3/8 | 11 3/8 | 11 3/8 | 11 3/8 | 11 3/8 | 11 5/8 | 11 5/8 |
| W | 1/4 | 3/8 | 3/8 | 3/8 | 1/2 | 1/2 | 5/8 | 5/8 | 5/8 | 5/8 | 5/8 | 5/8 | 5/8 | 5/8 | 5/8 | 5/8 |
| X | 7 3/16 | 7 3/16 | 6 11/16 | 6 11/16 | 8 15/16 | 8 15/16 | 10 5/16 | 10 5/16 | 10 5/16 | 10 5/16 | 14 7/16 | 14 7/16 | 14 7/16 | 14 7/16 | 16 3/8 | 16 3/8 |
| Y | 3 | 3 | 3 | 3 | 3 7/16 | 3 7/16 | 3 7/8 | 3 7/8 | 3 7/8 | 3 7/8 | 5 1/2 | 5 1/2 | 5 1/2 | 5 1/2 | 5 1/2 | 5 1/2 |
| Z | 2 | 2 | 2 1/2 | 2 1/2 | 4 1/2 | 4 1/2 | 6 1/4 | 6 1/4 | 6 1/4 | 6 1/4 | 13 15/16 | 13 15/16 | 18 3/16 | 18 3/16 | 21 11/16 | 21 11/16 |
| AA | — | — | — | — | — | — | — | — | — | — | 3/8 | 3/8 | 3/8 | 3/8 | 3/8 | 3/8 |
| BB | — | — | — | — | — | — | — | — | — | — | 1 15/16 | 1 15/16 | 0 | 0 | 0 | 0 |

Note: Dimensions are based on minimum beam and may vary with larger beams.