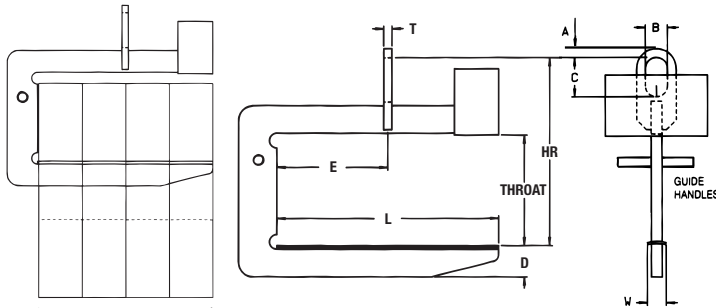


SCC SLIT COIL C-HOOK

PRODUCT FEATURES

- Designed for heavy duty applications.
- Handles multiple slit coils which maximizes handling efficiency.
- Recessed counterweight minimizes interference with equipment or other obstacles.
- High tensile alloy steel plate reduces physical size and weight.
- Counter balanced to hang level when empty.
- Inside radius on hooks avoid coil edge contact.
- Curved coil saddle is standard.
- Guide handles for ease of hook positioning.
- Available with optional padding for additional coil protection.
- Complies with ASME standards.



NOTE: E dimension is one half of "L" dimension.

WARNING
CENTER OF THE HOIST AND BAIL MUST BE IN-LINE WITH THE LOAD'S CENTER OF GRAVITY.

SPECIFICATIONS

Model Number	Capacity (tons)	Dimensions (inches)										Weight (lbs.)
		Coil Width Max.	Throat	Lifting Arm				Bail Dimensions			Thk. T	
				Length L	Depth D	Width W	HR Headroom	Opening				
A	B	C										
SCC536	5	36	24	36	5-5/16	4	37-1/4	1-1/2	4	7	1-1/4	450
SCC548		48	24	48	6-1/8	4	38	1-1/2	4	7	1-1/4	555
SCC560		60	24	60	6-9/16	4	38-9/16	1-1/2	4	7	1-1/4	649
SCC7536	7-1/2	36	24	36	5-5/8	4	37-5/8	1-1/2	4	7	1-1/2	496
SCC7548		48	24	48	6-5/16	4	38-5/16	1-1/2	4	7	1-1/2	731
SCC7560		60	24	60	7-1/8	4	38-7/8	1-1/2	4	7	1-1/2	898
SCC1048	10	48	24	48	7-3/16	4	41-1/8	2	5	9	1-3/4	932
SCC1060		60	24	60	7-5/16	4	41-1/8	2	5	9	1-3/4	1281
SCC1072		72	24	72	7-1/4	4	41-1/8	2	5	9	1-3/4	1570
SCC1548	15	48	30	48	7-1/4	4	47-7/8	2	5	9	1-3/4	1510
SCC1560		60	30	60	8	4	48	2	5	9	1-3/4	1789
SCC1572		72	30	72	8-7/8	4	48-3/4	2	5	9	1-3/4	2120
SCC2060	20	60	30	60	9-1/8	4	52-1/8	2-3/4	6	12	2	2125
SCC2072		72	30	72	9-15/16	4	52-15/16	2-3/4	6	12	2	2485
SCC2560	25	60	34	60	9-1/8	4	57-3/4	3-1/4	6	14	2-1/2	2840
SCC2572		72	34	72	9-3/4	4	58-1/2	3-3/4	6	14	2-1/2	3350

Other sizes available, consult factory.

COIL LIFTERS & UPENDERS