

# POWER ACCESSORIES NOSE-OVER BRACKETS



Nose-over brackets may be attached to slider bed or roller bed belt conveyors to smoothly bridge the transition of inclined or declined bed sections to horizontal bed sections. **NOTE:** 1-foot bed section supplied on double nose-over models.

## SPECIFY MODEL NUMBER PER EXAMPLE

### NO-D-15-3-RB

NO-(single or double nose-over\*)-(between frames\*\*)-  
(roller centers@)-(conveyor type@@)

\*Specify D for double or S for single nose-over.

\*\*Specify overall width for model 700BSB.

@Applicable for models 796RB and 700SB.

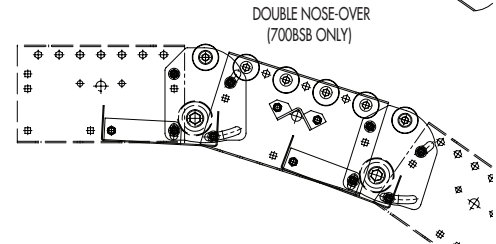
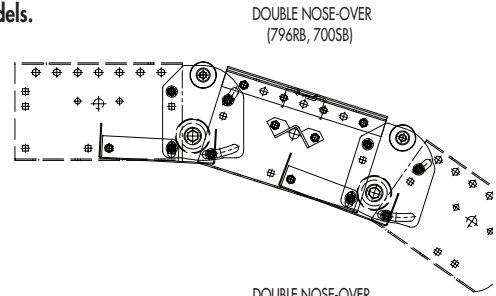
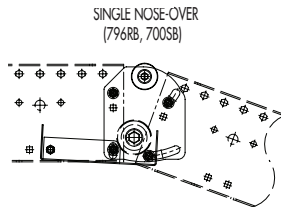
@@Specify RB for roller bed (model 796RB); SB for slider bed (model 700SB); BSB for slider bed (model 700BSB).

## SPECIFICATIONS

**CONSTRUCTION:** 12 ga. galvanized steel. Single nose-over adjusts from 0-20° and double nose-over adjusts from 0-35°.

**CARRIER ROLLERS:** 1.9" dia. x 16 ga. steel, model 196S.

**SNUB ROLLERS:** 2.5" dia. x 11 ga. steel, model 251S.



■ 24 hour shipment