

### Ralphs-Pugh Plastic Idler Rollers

Ralphs-Pugh plastic idler rollers are available in Through Hole, Blind Hole or Grading and Inspection configurations. Tubing is available in standard or “Hi-Impact” formulation. The “Hi-Impact” material has UV stabilizers and additional impact modifiers. Tube diameters and wall thicknesses are available for virtually every type of application. All plastic bushings and endplugs are molded in our facility assuring the highest quality. These bushings (standard and heavy duty) are molded in acetal plastic or our best material - Ultra (Acetal plastic with Teflon additives). UHMW bushings are also available in specific sizes or upon request. Tube diameters larger than 1.05” utilize an economical ABS plastic endplug in conjunction with the specified bushings. All Ralphs-Pugh materials are FDA approved. Stainless steel bushing adapters and cap screws are also available to complete your roller requirements. **We can also manufacture custom rollers to your specifications.**

#### How to order:

For specific ordering information please identify the roller style for your specific application and refer to the page in this section for that style. Roller styles are listed on each page.



## Plastic Idler Rollers - Through Hole (THI), Blind Hole (BHI), and Grading and Inspection (GIR)

### Roller Styles:

THI = Through Hole Idler Roller  
 BHI = Blind Hole Idler Roller  
 GIR = Grading and Inspection Idler Roller

### Tubes:

Tube No.	Tube O.D.	Wall Thickness
W00	0.840	0.107
W10	1.050	0.113
W20	1.310	0.133
W30	1.660	0.140
H41	1.900	0.112
H45/D45	1.900	0.200
H51	2.375	0.125
W55	2.375	0.218
H61	2.875	0.150
W65	2.875	0.276
D75	3.500	0.300
D85	4.500	0.337

### Bushings:

Standard Duty (7/8" long)	Heavy Duty (1 1/2" long)	GIR (1 13/16" long)
1/4T	1/4 5T**	7/16 5B
5/16T	5/16 5T**	1/2 5B
3/8T	3/8 5T	5/8 5B
7/16T	7/16 5T	9/16 5B
1/2T	1/2 5T	3/4 5B
3/8B	9/16 5T	
1/2B*	5/8 5T	
	3/4 5T	
	1/4 5B**	
	5/16 5B**	
	3/8 5B	
	7/16 5B	
	1/2 5B*	
	9/16 5B*	
	5/8 5B*	
	3/4 5B	

### Tube Materials:

W = White PVC  
 H = "Hi-Impact" White PVC  
 D = Dark Gray PVC

### Bushing Materials: FDA Approved

Molded acetal unless otherwise specified

### Options:

UHMW  
 Molded "Ultra Blue" Acetal  
 with Teflon additives

\*\* UHMW only

5 = Heavy duty bushing - 1 1/2" long

T = Through Hole Bushing

B = Blind Hole Bushing

GIR = Grading and Inspection Bushing  
 - 1 13/16" long

\* Hardware available

### Hardware:

Includes 2 each SSBA and 2 each SSCS

SSBA = Stainless steel bushing adapter drilled and tapped 5/16" - 18

SSCS = Stainless steel cap screws threaded 5/16" - 18

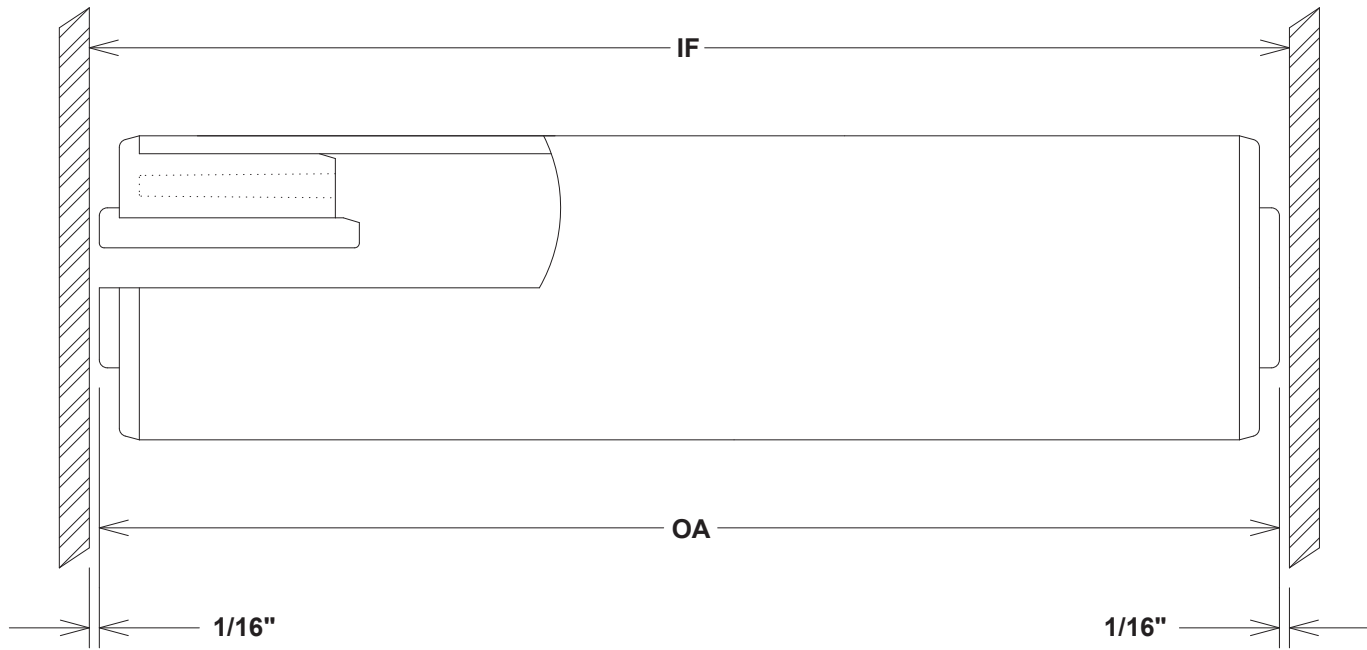


Through Hole  
Bushing

Blind Hole  
Bushing

Grading & Inspection  
Bushing

Through Hole Idler Rollers (THI) - Standard Duty Bushings



**Tubes:**

Tube No.	Tube O.D.	Wall Thickness
W00	0.840	0.107
W20	1.310	0.133
H41	1.900	0.112

**Bushings:**

Standard Duty
1/4T
5/16T
3/8T
7/16T
1/2T

**Tube Materials:**

W = White PVC  
H = "Hi-Impact" White PVC

**Bushing Materials: FDA Approved**

Molded Acetal unless otherwise specified

**Options:**

Molded "Ultra Blue" Acetal with Teflon additives  
UHMW (upon request)

**Ordering Example:**

Roller O.D. and wall thickness from tube chart \_\_\_\_\_  
 Bushing size, type and duty from bushing chart \_\_\_\_\_  
 Roller Style \_\_\_\_\_  
 Length of Roller \_\_\_\_\_

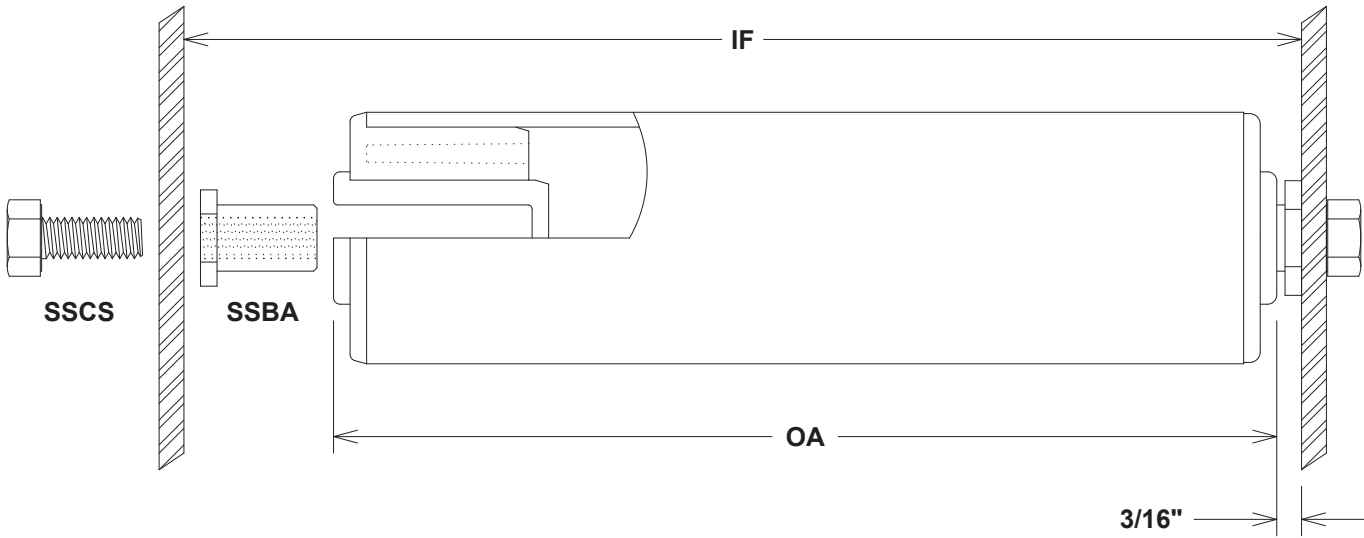
**41 - 1/2T - THI X 24" OA**

O.A. = length of roller from outside to outside of plastic bushing

I.F. = Inside frame dimension (will allow 1/8" endplay when roller is installed)

\* Note: Minimum I.F. should be O.A. + 1/8"

### Blind Hole Idler Rollers (BHI) - Standard Duty Bushings



**Tubes:**

Tube No.	Tube O.D.	Wall Thickness
W20	1.310	0.133
H41	1.900	0.112

**Bushings:**

Standard Duty
3/8B
1/2B

**Tube Materials:**

W = White PVC  
H = "Hi-Impact" White PVC

**Bushing Materials: FDA approved**

Molded Acetal unless otherwise specified

**Options:**

Molded "Ultra Blue" Acetal with Teflon additives  
UHMW (upon request)

**Hardware:**

Frame hardware available for 1/2 B only consisting of; 2 each SSBA and 2 each SSCS  
SSBA = Stainless steel bushing adapter drilled and tapped 5/16" - 18  
SSCS = Stainless steel cap screw threaded 5/16" - 18

**Ordering example:**

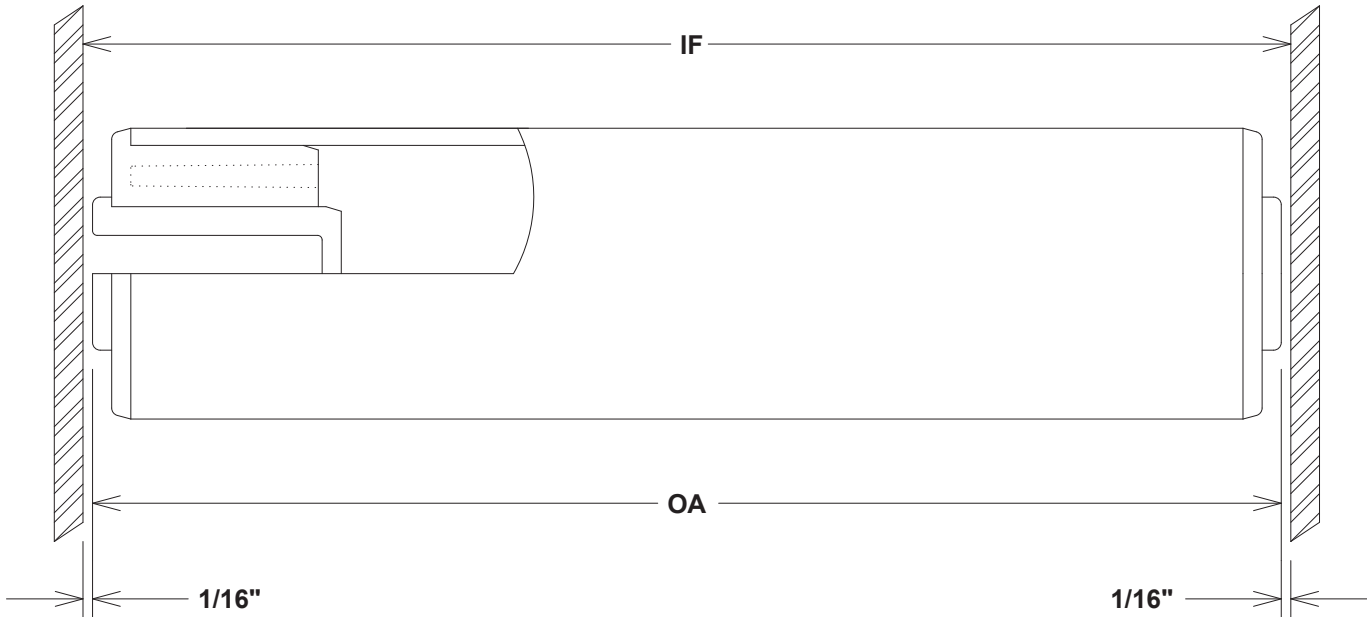
41 - 1/2B - BHI X 24" IF with hardware

Roller O.D. and wall thickness from tube chart \_\_\_\_\_  
Bushing size, type and duty from bushing chart \_\_\_\_\_  
Roller Style \_\_\_\_\_  
Length of Roller \_\_\_\_\_

O.A. = Length of roller from outside to outside of plastic bushing

I.F. = Inside frame dimension (will allow 1/8" endplay when installed). Minimum I.F. dimension should be 3/8" greater than the O.A. so that the idler will fit in with the hardware and allow 1/8" endplay

## Blind Hole Idler Rollers (BHI) - Heavy Duty Bushings - GIR



**Tubes:**

Tube No.	Tube O.D.	Wall Thickness
W10	1.050	0.113
W20	1.310	0.133
W30	1.660	0.140
H41	1.900	0.112
H45 / D45	1.900	0.200
H51	2.375	0.125
W55	2.375	0.218
H61	2.875	0.150
W65	2.875	0.276
D75	3.500	0.300
D85	4.500	0.337

**Bushings:**

Heavy Duty
7/16 5B GIR
1/2 5B GIR
9/16 5B GIR
5/8 5B GIR
3/4 5B GIR

5 = Heavy duty bushing  
 B = Blind hole style bushing  
 GIR = Grading and Inspection - 1 13/16" long

**Tube Materials:**

W = White PVC  
 H = "Hi-Impact" White PVC  
 D = Dark Gray PVC

**Bushing Materials: FDA Approved**

Molded Acetal unless otherwise specified

**Hardware:**

Not available

**Options:**

Molded "Ultra Blue" Acetal with Teflon additives  
 UHMW (upon request)

**Ordering example:**

Roller O.D. and wall thickness from tube chart \_\_\_\_\_  
 Bushing size, type and duty from bushing chart \_\_\_\_\_  
 Roller Style \_\_\_\_\_  
 Length of Roller \_\_\_\_\_

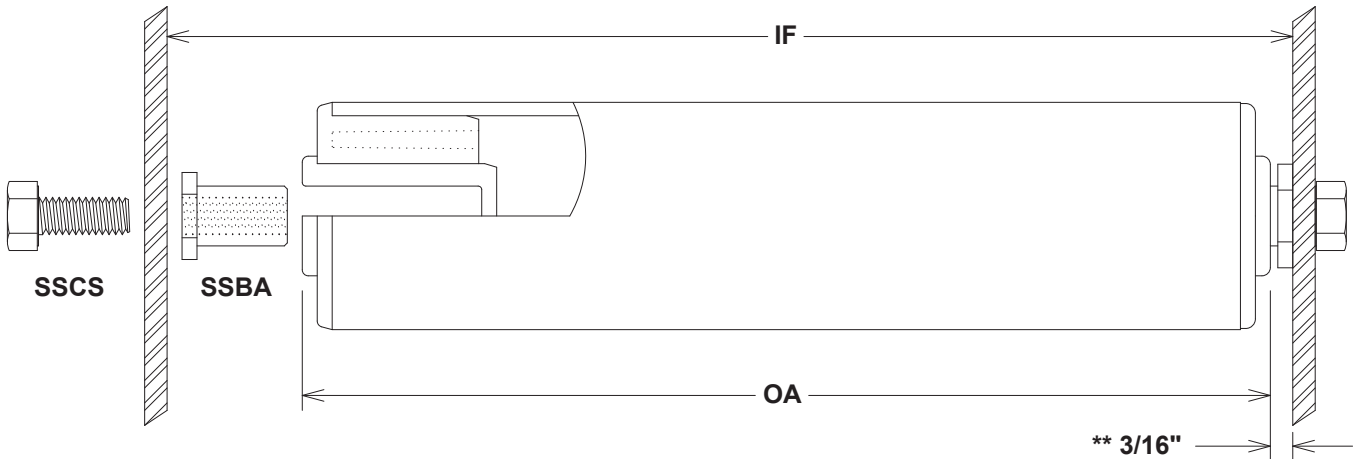
**51 - 1/2 5B GIR X 24" OA**

O.A. = Length of roller from outside to outside of plastic bushing

I.F. = Inside frame dimension (will allow 1/8" endplay when roller is installed).

\* Note: Minimum IF should be OA + 1/8"

**Blind Hole Idler Rollers (BHI) - Heavy Duty Bushings**



**Tubes:**

Tube No.	Tube O.D.	Wall Thickness
W10	1.050	0.113
W20	1.310	0.133
W30	1.660	0.140
H41	1.900	0.112
H45 / D45	1.900	0.200
H51	2.375	0.125
W55	2.375	0.218
H61	2.875	0.150
W65	2.875	0.276
D75	3.500	0.300
D85	4.500	0.337

**Bushings:**

Heavy Duty
1/4 5B*
5/16 5B*
3/8 5B
7/16 5B
1/2 5B
9/16 5B
5/8 5B
3/4 5B

5 = Heavy duty bushing - 1 1/2" long  
 B = Blind hole style bushing

**Tube Materials:**

W = White PVC  
 H = "Hi-Impact" White PVC  
 D = Dark Gray PVC

**Bushing Materials: FDA Approved**

Molded Acetal unless otherwise specified

**Options:**

Molded "Ultra Blue" Acetal with Teflon additives

\* UHMW only (upon request)

Hardware includes: 2 each SSBA and 2 each SSCS

**Hardware:**

Frame hardware available for 1/2 5B, 9/16 5B and 5/8 5B only  
 SSBA = Stainless steel bushing adapter drilled and tapped 5/16" - 18  
 SSCS = Stainless steel cap screw threaded 5/16" - 18

**Ordering example:**

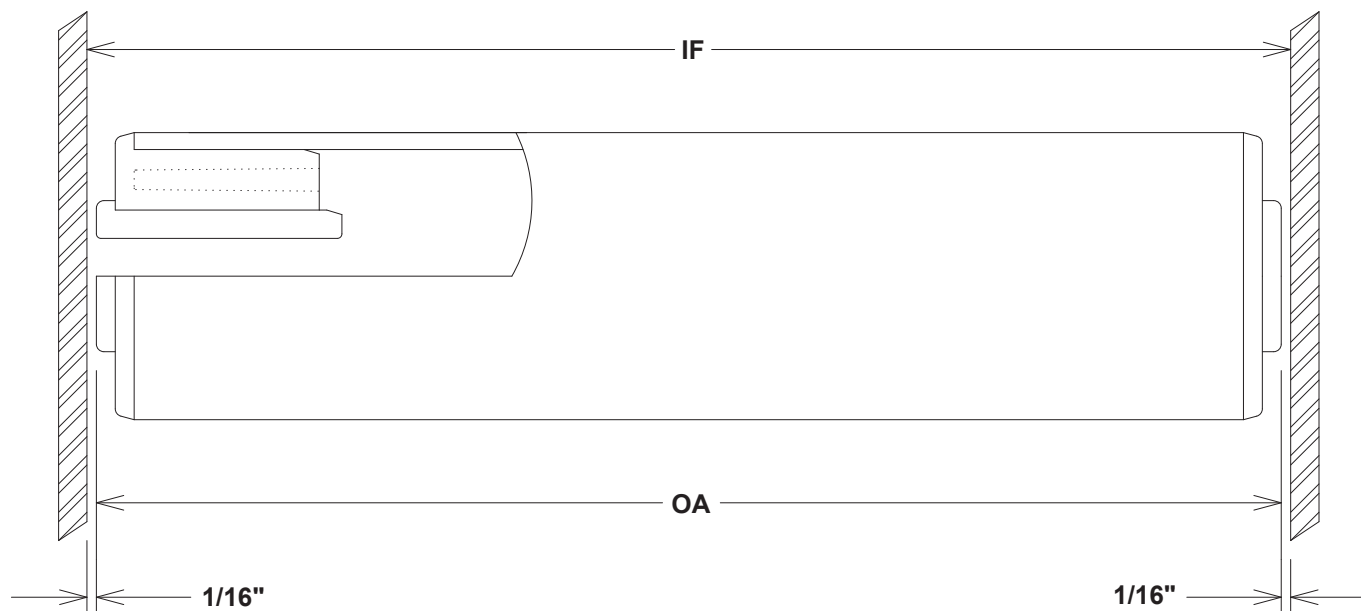
Roller O.D. and wall thickness from tube chart \_\_\_\_\_ **41 - 1/2 5B - BHI X 24" IF with hardware**  
 Bushing size, type and duty from bushing chart \_\_\_\_\_  
 Roller Style \_\_\_\_\_  
 Length of Roller \_\_\_\_\_

O.A. = length of roller from outside to outside of plastic bushing

I.F. = Inside frame dimension (will allow 1/8" endplay when roller is installed). Minimum IF dimension should be 3/8" greater than the OA so that the idler will fit in with the hardware and allow 1/8" endplay

\*\* Exception: 5/8" Hardware Requires 1/2" Greater Than OA

## Through Hole Idler Rollers (THI) - Heavy Duty Bushings



**Tubes:**

Tube No.	Tube O.D.	Wall Thickness
W00	0.840	0.107
W10	1.050	0.113
W20	1.310	0.133
W30	1.660	0.140
H41	1.900	0.112
H45 / D45	1.900	0.200
H51	2.375	0.125
W55	2.375	0.218
H61	2.875	0.150
W65	2.875	0.276
D75	3.500	0.300
D85	4.500	0.337

**Bushings:**

Heavy Duty
1/4 5T*
5/16 5T*
3/8 5T
7/16 5T
1/2 5T
9/16 5T
5/8 5T
3/4 5T

5 = Heavy duty bushing - 1 1/2" long  
T = Through hole style bushing

**Tube Materials:**

W = White PVC  
H = "Hi-Impact" White PVC  
D = Dark Gray PVC

**Bushing Materials: FDA Approved**

Molded Acetal unless otherwise specified

**Options:**

Molded "Ultra Blue" Acetal with Teflon additives

\* UHMW only (upon request)

**Ordering example:**

Roller O.D. and wall thickness from tube chart \_\_\_\_\_ **41 - 1/2 5T - THI X 24" OA**  
 Bushing size, type and duty from bushing chart \_\_\_\_\_  
 Roller Style \_\_\_\_\_  
 Length of Roller \_\_\_\_\_

O.A. = length of roller from outside to outside of plastic bushing

I.F. = Inside frame dimension (will allow 1/8" endplay when roller is installed)

\* Note: Minimum I.F. should be O.A. + 1/8"