

STANDARD GRAVITY CONVEYOR ROLLERS

Roller Diameters

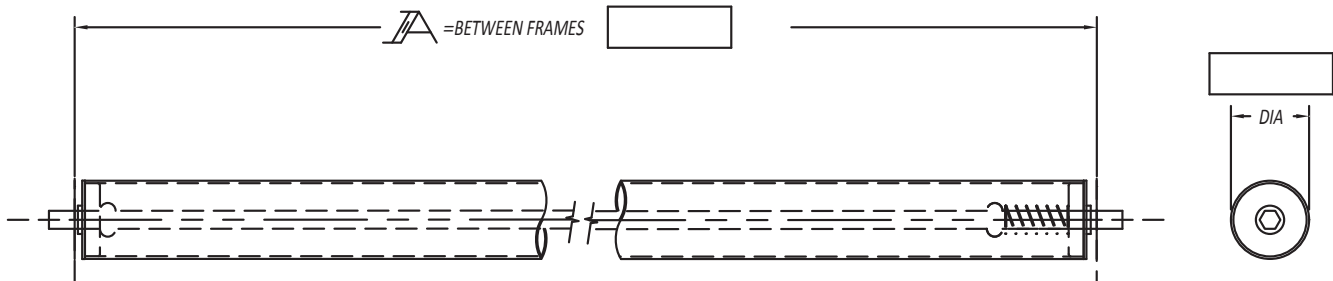
1" 1-3/8" 1.9" 2-1/2" 2-9/16" 3-1/2" 4-1/4" 5"

When Ordering Please Specify the Following:

- Part Number
- Between Frame Dimensions
- Bearing Type

Options:

- Zinc Plated Rollers & Axles
- Zinc Coated Tubing
- Polyurethane Roller Covering
- Custom Configurations



QUANTITY:

Example: 251S-24-MFC-2280-11H



ROLLERS

ROLLERS FOR GRAVITY AND POWER APPLICATIONS



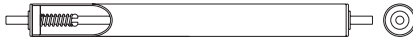
ROLLER #	OUTSIDE DIA.	WALL	MATERIAL	SHAFT DIA.	SHAFT RETENTION	BEARING #	BEARING MT.	MAX. LOAD	GRAVITY MODEL.	POWER/ MAX. SPEED
108G	1"	18 GA.	Galvanized	1/4" Round	Springloaded	BRW04710	Press In	35 lbs.	YES	-
138G	1-3/8"	18 GA.	Galvanized	1/4" Round	Springloaded	BRW04515	Swaged	50 lbs.	YES	-
138A	1-3/8"	18 GA.	Aluminum	1/4" Round	Springloaded	BRW04515-01	Swaged	35 lbs.	YES	-
138G	1-3/8"	18 GA.	Galvanized	5/16" Hex	Springloaded	BRW04520-01	Swaged	50 lbs.	-	120FPM
138A	1-3/8"	18 GA.	Aluminum	5/16" Hex	Springloaded	BRW04520	Swaged	35 lbs.	-	120FPM
138T	1.9" — 1-3/8"	16 GA.	Steel	5/16" Hex	Springloaded	BRW04531-02/04519	Press In/ Swaged	100 lbs.	YES	120FPM
196A	1.9"	.200	Aluminum	7/16" Hex	Springloaded	BRW04530	Swaged	50 lbs.	YES	-
196G	1.9"	16 GA.	Galvanized	7/16" Hex	Springloaded	BRW04530	Swaged	260 lbs.	YES	120FPM
196S	1.9"	16 GA.	Steel	7/16" Hex	Springloaded	BRW04530	Swaged	260 lbs.	YES	120FPM
192S	1.9"	12 GA.	Steel	7/16" Hex	Springloaded	BRW04535	Swaged	260 lbs.	YES	120FPM
192S	1.9"	12 GA.	Steel	7/16" Hex	Springloaded	BRW04586	Press In	300 lbs.	-	150FPM
199S	1.9"	9 GA.	Steel	7/16" Hex	Springloaded	BRW04535	Swaged	260 lbs.	YES	150FPM
254S	2.5"	14 GA.	Steel	7/16" Hex	Springloaded	BRW04575	Press In	290 lbs.	YES	150FPM
254T	2.5" — 1-11/16"	14 GA.	Steel	7/16" Hex	Springloaded	BRW04575	Press In	290 lbs.	YES	120FPM
251S	2.5"	11 GA.	Steel	11/16" Hex	Springloaded	BRW04564	Crimped	540 lbs.	YES	-
251S	2.5"	11 GA.	Steel	11/16" Hex	Springloaded	BRW04565	Crimped	540 lbs.	-	150FPM
297S	2-9/16"	7 GA.	Steel	11/16" Hex	Springloaded	BRW04564	Crimped	540 lbs.	YES	-
297S	2-9/16"	7 GA.	Steel	11/16" Hex	Springloaded	BRW04565	Crimped	540 lbs.	-	150FPM
3509S	3.5"	9 GA.	Steel	11/16" Hex	Springloaded	BRW04578	Crimped	700 lbs.	YES	-
3530S	3.5"	.300	Steel	1-1/16" Hex	Pinned	BRW04737	Press In	2500 lbs.	YES	-

■ 24 hour shipment ■ 2 week shipment

*ALL LOADS ARE RATED AT 60 SFM (SURFACE FEET PER MINUTE) AND ARE BASED ON MINIMUM STANDARD BF WIDTH. **For higher speeds, consult factory.

LIGHT DUTY ROLLERS

MODEL 108G w/ BRW04710



MODEL 138G w/ BRW04515
MODEL 138A w/ BRW04515-01



MODEL 138G w/ BRW04520-01
MODEL 138A w/ BRW04520

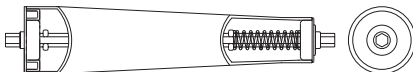


MODEL 138T w/ BRW04531-02
AND BRW04519 (SMALL END)



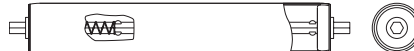
MEDIUM DUTY ROLLERS

MODEL 254T w/ BRW04575



MEDIUM DUTY ROLLERS

MODEL 196S w/ BRW04530
MODEL 196G w/ BRW04530
MODEL 196A w/ BRW04530



MODEL 192S w/ BRW04535



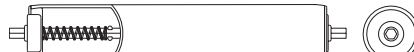
MODEL 192S w/ BRW04586



MODEL 199S w/ BRW04535



MODEL 254S w/ BRW04575



HEAVY DUTY ROLLERS

MODEL 251S w/ BRW04564
MODEL 251S w/ BRW04565



MODEL 297S w/ BRW04565
MODEL 297S w/ BRW04564



MODEL 3509S w/ BRW04578



MODEL 3530S w/ BRW04737



Gravity Conveyor Rollers



Part Number	Description	Available Bearings
425438S	4-1/4" diameter x 7/16" wall, 1-1/4" hex axles, Pin retained	# B1101-2, 2,250 lbs. / bearing
50750S	5" diameter x 3/4" wall, 1-1/2" hex axles, Pin retained	# B1120-2, 3,750 lbs. / bearing