

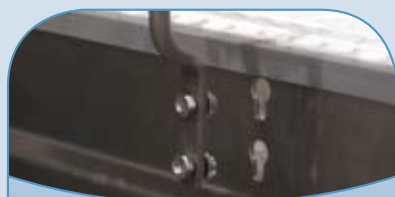
Improve your bottom line results with industry leading speeds, best in class product transfers, and ease of automation.

AquaGard®



Tailor Fit Accessories for Your Needs

Ease of Automation & Guiding



No Drilling with Innovative Key Hole & Mounting Rod



Low Voltage Wiring Accessories



Accessory Bar for Mounting Multiple Accessories



Fully Adjustable Single Rail



Fully Adjustable Twin Rail

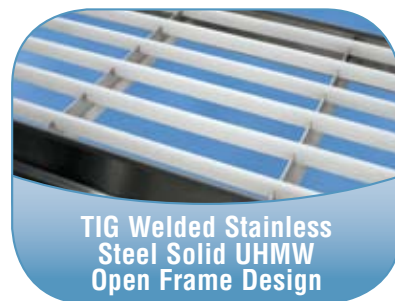


High Side Guide



Maximum Flexibility

- Straights, Curve and Z-Frame Modules
- 3 Product Transfers to Choose From
- No Drilling Required for Ease of Automation or Guiding
 - Attach controls, photo eyes, low voltage wire, & air tubing
 - Attach accessory bar for mounting several automation components
 - Attach any of standard guide packages to tailor fit conveyor



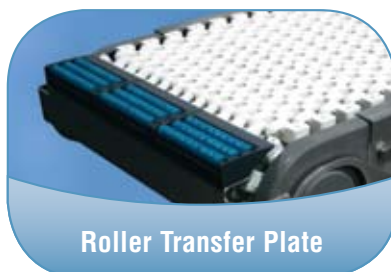
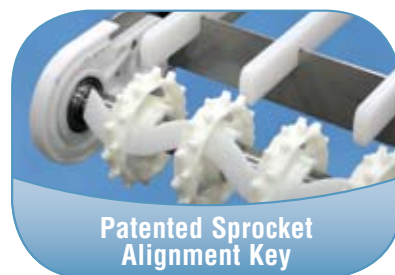
Increase Throughput

- Speeds up to 260 feet per minute
- Available in Straights, Curves and Z-Frames
- 1" Nose Bar Tails
- Powered Transfer



Reduce Product Loss

- 1" Nose Bar Tails for small part transfer
- Powered Transfer for maintaining speeds through transfer
- Roller transfer plate for smooth product transfer in minimal added length





Specifications:

- Modular Flat, Modular Cleated and Curved Modular Flat Belt models
- Loads up to 750 lbs* (453 kg)
- Belt speeds up to 260 ft/min (78.6 m/min)
- Belt widths: 4" (102 mm) to 36" (914 mm)
- Conveyor lengths: 3' (914 mm) to 83' (25,298 mm)
- Cleats available in 1" and 3" heights
- 45°, 90°, 135°, & 180° curves available
- Wearstrip material is UHMW
- TIG welded 304 Stainless Steel Frame
- FDA approved belting and plastic components
- CE models available



* Conveyor load capacity depends on conveyor size, incline, motor position, accumulated loads and other factors.

Features & Benefits:

- Frame is constructed of TIG welded 304 stainless steel and features open design with minimal horizontal surfaces
- Solid UHMW wear strips located in welded cross members for durable belt support
- Mount controls and accessories fast with no drilling required includes adjustable guiding, photo eyes, low voltage wires, controls, and air tubing
- Flexible guiding packages for a variety of applications including fully adjustable single and twin rail, and high side
- The nose bar drive and idler tails (optional) has 1" diameter pulley available for small product transfers
- The Powered Transfer (optional) has 1/2" diameter pulleys for maintaining speed through transfer
- Roller Transfer Plate (optional) for smooth product transfer in minimal added length
- Conveyor is suitable for wipe-down and occasional pressurized liquid spray cleaning up to 100 psi max



**Easy to
Accessorize**

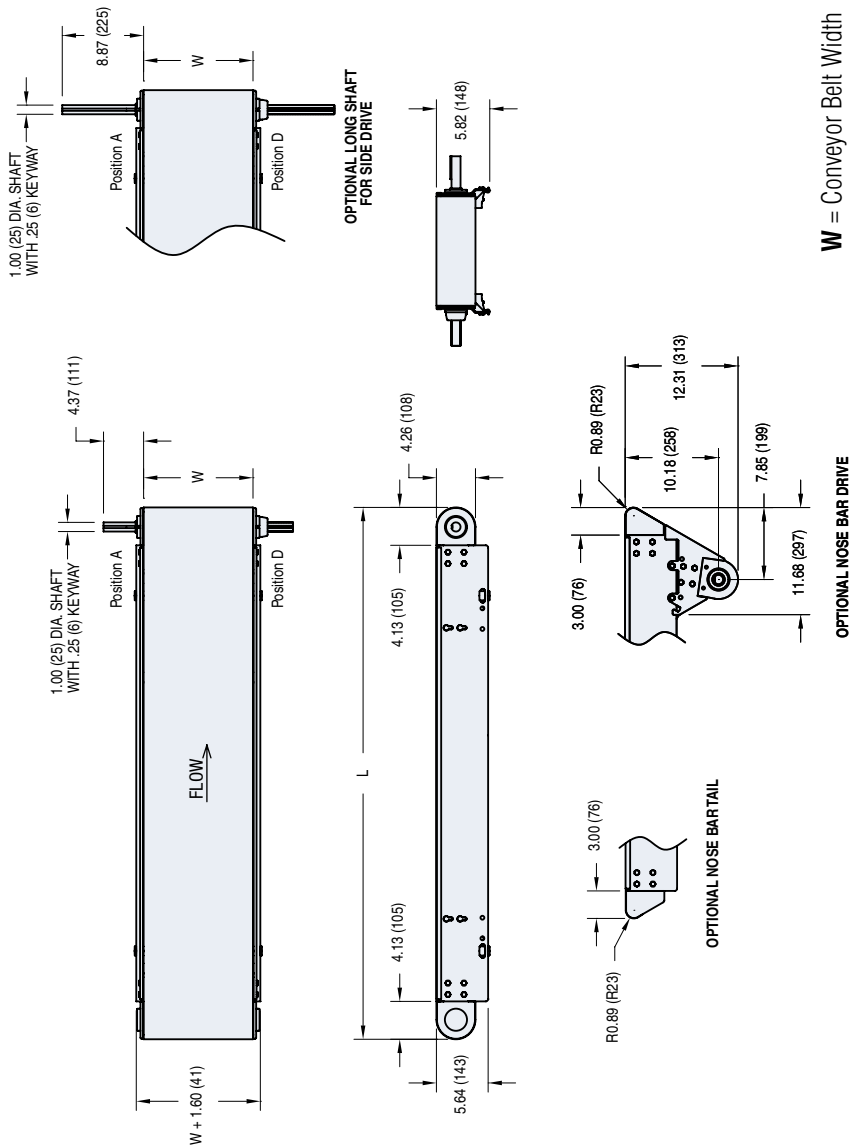


**1" Nose Bar
Tail**



AQUAGARD® 7350 SERIES: STRAIGHT & CURVED MODULAR BELT

DORNER
MOVE FAST. MOVE SMART.



STANDARD OPTIONS

Powered Transfer

For small parts and maintaining speeds through transfer. Slave driven with speeds up to 260 ft/min.



Roller Transfer Plate

For smooth product transitions in minimal added length.



STANDARD MODELS



Modular Flat Belt



Modular Cleated Belt



Curved Modular Flat Belt

For more information, go to www.dorner.com. Call 800.397.8664 or 262.367.7600.

Due to the wide variety of drive set ups and applications, point of installation guarding is the responsibility of the end user.

AquaGard® 7350 SERIES: Z-FRAME & CURVED MODULAR FLAT BELT



Specifications:

- Z-Frame Modular Flat, Modular Cleated and Curved Modular Flat Belt models
- Loads up to 750 lbs (453 kg)
- Belt speeds up to 260 ft/min maximum (78.6 m/min)
- Belt widths: 4" (102 mm) to 24" (610 mm)
- Total lengths up to 83' (25,298 mm)
- Z-Frame Straight and Z-Frame Curved Modular Flat Belt has 5° to 30° fixed angle modules available in 5° increments
- Z-Frame Modular Cleated Belt has 5° to 60° fixed angle modules available in 5° increments
- 45°, 90°, 135°, & 180° curves available
- Wearstrip material is UHMW
- TIG welded 304 Stainless Steel Frame
- FDA approved belting and plastic components
- **CE** models available



* Conveyor load capacity depends on conveyor size, incline, motor position, accumulated loads and other factors.

Features & Benefits:

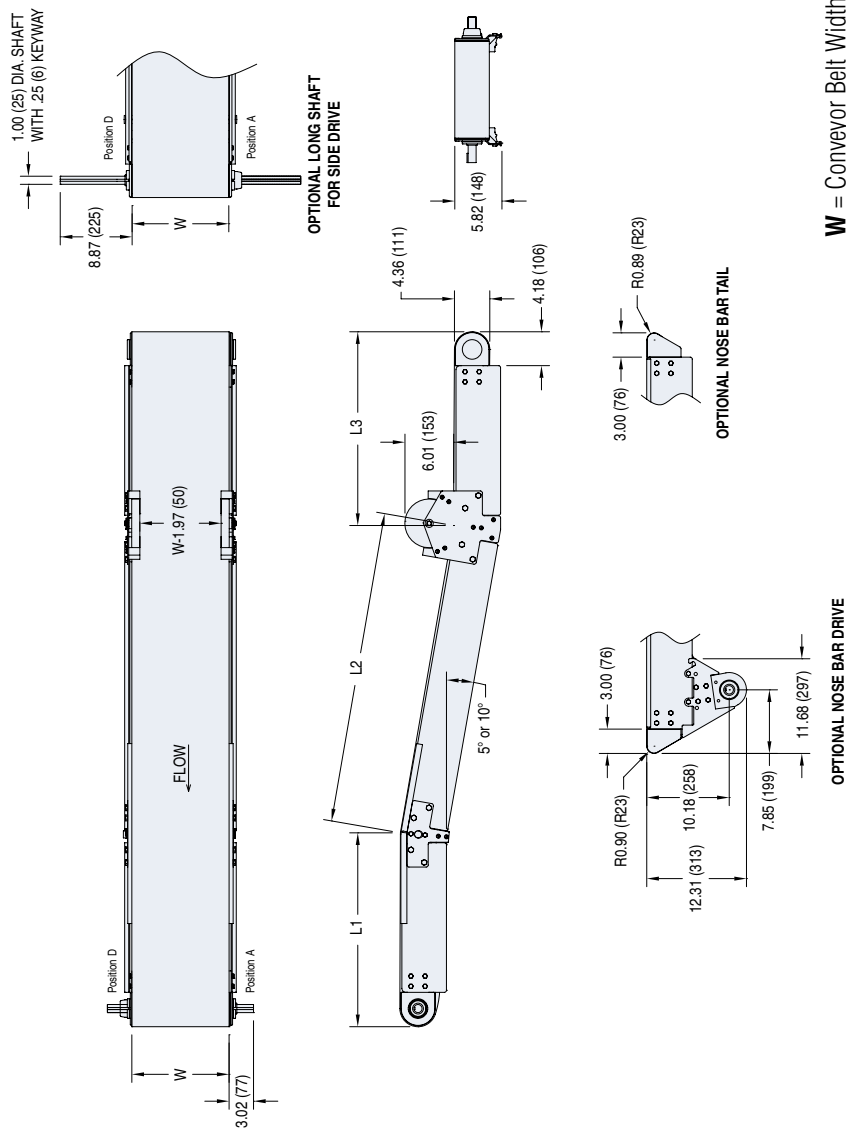
- Frame is constructed of TIG welded 304 stainless steel and features open design with minimal horizontal surfaces
- Solid UHMW wear strips located in welded cross members for durable belt support
- Mount controls and accessories fast with no drilling required includes adjustable guiding, photo eyes, low voltage wires, controls, and air tubing
- Flexible guiding packages for a variety of applications including fully adjustable single and twin rail, and high side
- The nose bar drive and idler tails (optional) has 1" diameter pulley available for small product transfers
- The Powered Transfer (optional) has 1/2" diameter pulleys for maintaining speed through transfer
- Roller Transfer Plate (optional) for smooth product transfer in minimal added length
- Conveyor is suitable for wipe-down and occasional pressurized liquid spray cleaning up to 100 psi max



**Easy to
Accessorize**



**1" Nose Bar
Tail**



W = Conveyor Belt Width Dim = in (mm)

STANDARD OPTIONS

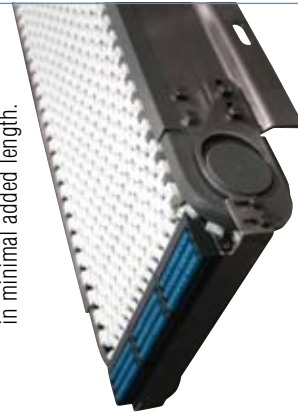
Powered Transfer

For small parts and maintaining speeds through transfer. Slave driven with speeds up to 260 ft/min.



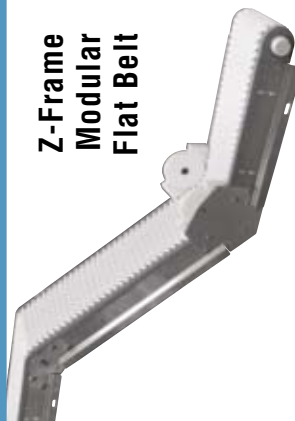
Roller Transfer Plate

For smooth product transitions in minimal added length.



STANDARD MODELS

Z-Frame Modular Flat Belt



Z-Frame Modular Cleated Belt



Z-Frame Curved Modular Flat Belt



For more information, go to www.dorner.com. Call 800.397.8664 or 262.367.7600.

Due to the wide variety of drive set ups and applications, point of installation guarding is the responsibility of the end user.