

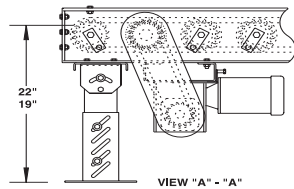
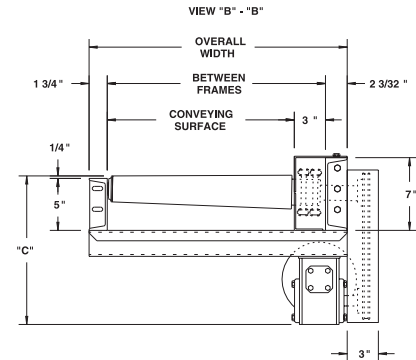
# MODEL 351TCDLRC HEAVY DUTY TAPERED ROLLER CHAIN DRIVEN LIVE ROLLER CURVE



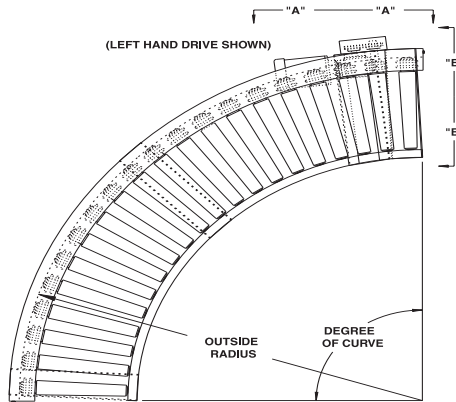
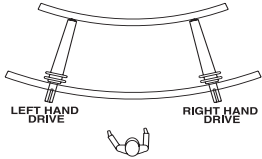
Conveyor shown with side mounted drive and optional supports

351TCDLRC is a true taper heavy duty chain driven live roller curve. Ideal for conveying pallets or other heavy unit loads, this conveyor features "true taper" to maintain product orientation throughout the curve.

**SPECIFY MODEL NUMBER PER EXAMPLE**  
**351TCDLRC-51-90-R**  
 351TCDLRC-(between frames)-(degree)-(left or right)



#### DETERMINING DRIVE LOCATION



| UNIT |         | 90°       |           | 45°       |           |
|------|---------|-----------|-----------|-----------|-----------|
| BF   | ROLLERS | QTY. RLS. | WT (lbs.) | QTY. RLS. | WT (lbs.) |
| 21"  | 3-1/4"  | 20        | 778       | 10        | 423       |
| 27"  | 3-1/2"  | 22        | 966       | 11        | 524       |
| 33"  | 3-3/4"  | 24        | 1192      | 12        | 644       |
| 39"  | 4"      | 26        | 1460      | 13        | 787       |
| 45"  | 4-1/4"  | 26        | 1523      | 13        | 801       |
| 51"  | 4-1/2"  | 28        | 1889      | 14        | 990       |
| 57"  | 4-3/4"  | 30        | 2307      | 15        | 1210      |
| 63"  | 5"      | 32        | 2789      | 16        | 1464      |

## SPECIFICATIONS

**TREAD ROLLERS:** Heavy duty 11 ga. tapered rollers, model 351T with sprockets, for true taper effect. See chart, upper right corner for roller dia.

**CHAIN DRIVE:** Roller to roller with No. 60 circular roller chain.

**END DRIVE:** Reversible drive either side mounted or underside (specify). Main drive roller is supported by precision, heavy duty, lubricated, ball bearing units.

**ROLLER CENTERS:** 6" RC measured at outside radius of curve.

**SPEED:** 35 FPM, constant.

**BED:** 5" at 6.7 lbs. and 7" at 9.8 lbs. structural steel channel frame.

**BEARINGS:** Precision ABEC bearings.

**CHAIN GUARD:** The chain drive is enclosed, top and bottom, along the entire length of the conveyor.

**MOTOR DRIVE:** 3/4 HP, 230/460/3, 60 cycle, ODP right angle gear motor.

**DRIVE LOCATION:** Drive located on outside of curve. Specify right hand drive or left hand drive (drive hand determined with reference point located at outside of curve).

**ELECTRICAL CONTROLS:** Optional.

| HP @ 35FPM | "C"     |
|------------|---------|
| 3/4        | 15"     |
| 1          | 15-1/4" |
| 1-1/2      | 16-1/8" |
| 2          | 17"     |

## OPTIONAL EQUIPMENT

**BED:** Rollers on 4-1/2" centers on outside radius for 21"-39" BF.

**FLOOR SUPPORTS:** Supports available. See Conveyor Accessories.

**SPEED:** Constant speed 1.5-60 FPM; DC variable speed; AC inverter variable speed. Other constant or variable speeds available.

**NOTE: CAPACITY CHANGES WITH SPEED. 100 FPM MAX. WITH ROLLER-TO-ROLLER CHAIN DRIVE.**

**MOTORS:** Available through 3 HP in TEFC, explosion proof, dirty duty, 115/230/1, 575/3, etc.

CHAIN DRIVEN LIVE ROLLERS