

MODEL 711 Drag Conveyors

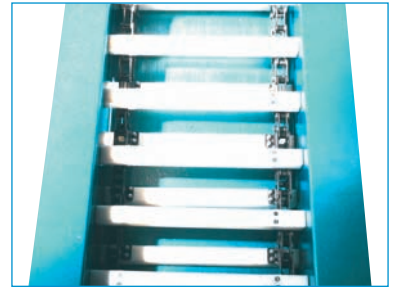
This tough, abrasion-resistant conveyor features replaceable bottom pans and drag flights. These units are designed to drag very small fines, chips, turnings or granulated scrap.



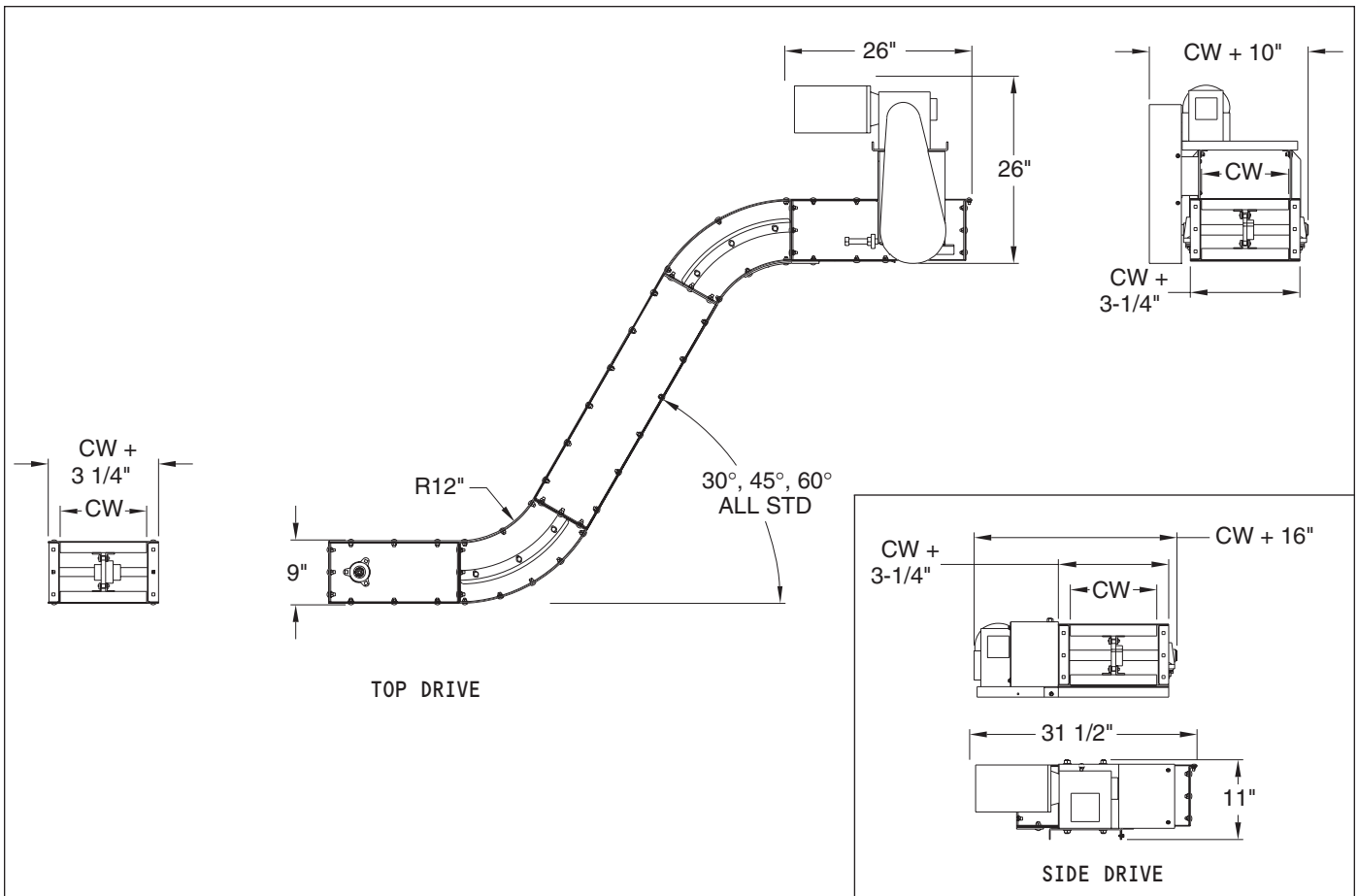
Single Strand



Dual Strand



Chain Width:	6"	8"	10"	12"
Frame Width:	9-1/4"	11-1/4"	13-1/4"	15-1/4"



MODEL 711 Drag Conveyors



Standard Specifications

Widths: 6", 8", 10" and 12"

Curves: 30°, 45°, and 60°

Lengths: Up to 20'

Standard Speed: 20 FPM

Standard Motor: 1/2 HP 230/460/3/60 TEFC

Standard Drive: Top Mount, Right Side

Frame: 8-5/8" Deep x 12 Gauge

Bearings: Grease Sealed

Sprockets: 12 Tooth, 3.854" Pitch Diameter

Belt: 2" Pitch with Replaceable 1-1/2" High UHMW Drag Flights on 12" Centers; Single-Strand Chain Design (Model 711) Dual-Strand Chain Design (Model 716)

Drag Conveyors Comparison Chart

Drag Conveyors — These units are designed to drag very small fines, chips, turnings or granulated scrap

MODEL	DESCRIPTION	FRAME GAUGE	FRAME DEPTH	DRIVER SIZE	DRIVER TYPE*	DRIVER SHAFT DIA.	IDLER SIZE	IDLER TYPE	IDLER SHAFT DIA.	STANDARD CARRIER	STD. DRIVE	OTHER
711	Single strand drag	12	8.5"	12 tooth	3.854" pd	1.4375"	12 tooth	3.854" pd	1.1875"	1-1/2" UHMW cleats	Top	Available with standard or liquid tight bottom pan
716	Dual strand drag											

Unit Weights (Shipping Weights – lbs.)

Model 711

CHAIN WIDTHS	6"	8"	10"	12"
LENGTHS				
4'	252	262	273	283
8'	331	349	368	386
12'	446	473	501	528
16'	525	560	596	631
20'	604	647	691	734
24'	719	771	824	876
28'	798	858	919	979
ADD FOR EACH CURVE	53	58	63	67

Conveyor weights include standard drive and supports. Other options, crating etc. are not included.

Model 716

CHAIN WIDTHS	6"	8"	10"	12"
LENGTHS				
4'	257	268	278	289
8'	336	355	373	392
12'	451	479	506	534
16'	530	566	601	637
20'	609	653	696	740
24'	724	777	829	882
28'	803	864	924	985
ADD FOR EACH CURVE	54	59	64	68

Conveyor weights include standard drive and supports. Other options, crating etc. are not included.

Skid Dimensions

Model 711 — Note: these are general guidelines for freight rate estimates only. Final dimensions may vary.

BELT WIDTHS	8"	12"	18"	24"
Top Mount Skid Width	20"	24"	30"	36"
Side Mount Skid Width	32"	36"	42"	48"

Skid Length – These units are typically shipped assembled. The skid length is the overall length + 5". Maximum skid length is 27'.

