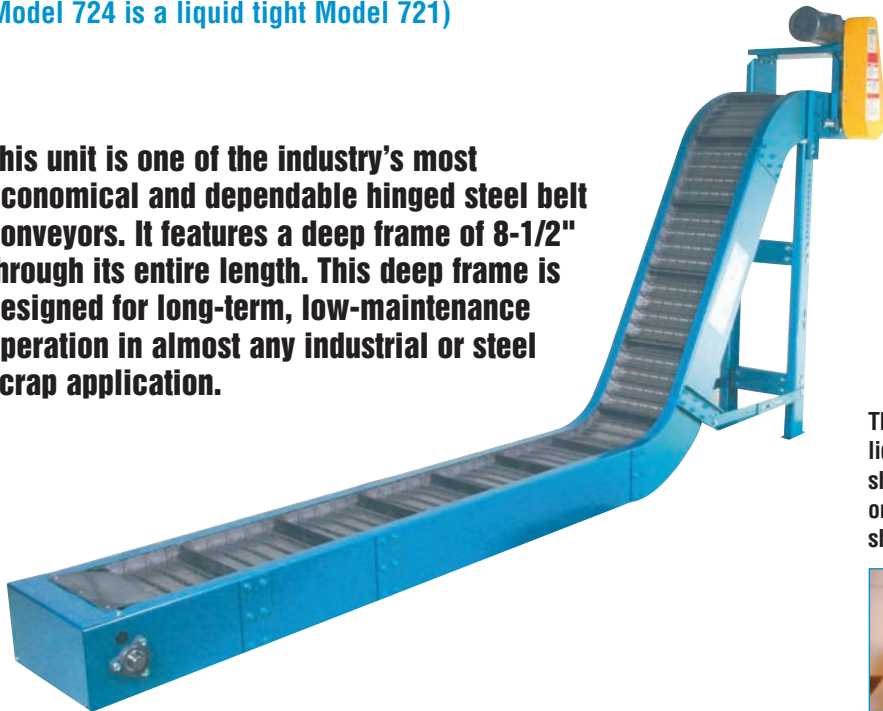


MODEL 721 & 724 Standard Duty Scrap Conveyor



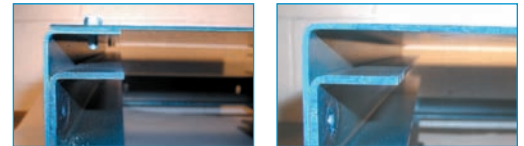
(Model 724 is a liquid tight Model 721)

This unit is one of the industry's most economical and dependable hinged steel belt conveyors. It features a deep frame of 8-1/2" through its entire length. This deep frame is designed for long-term, low-maintenance operation in almost any industrial or steel scrap application.



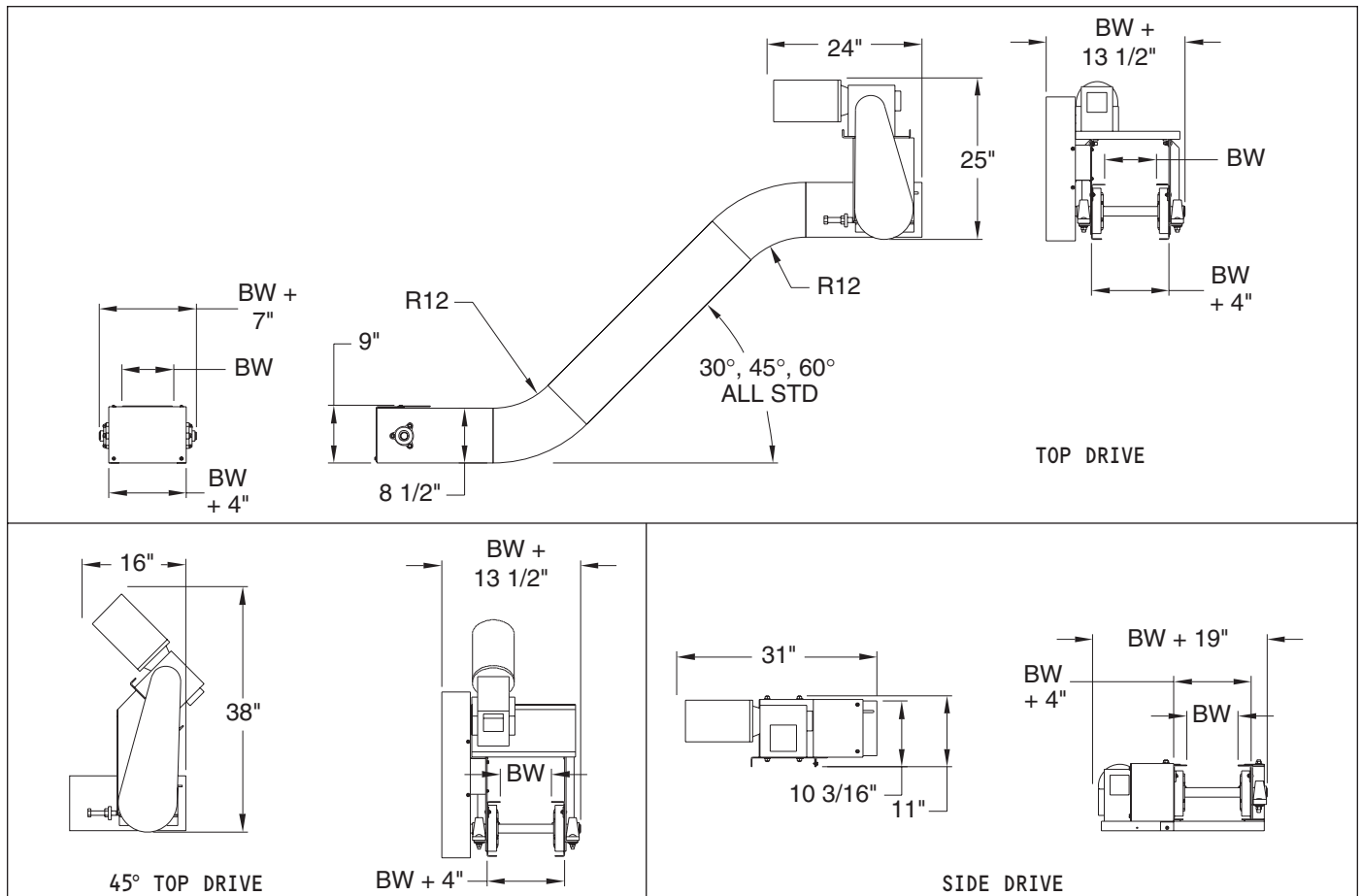
Model 721 Type III with 60 degree curves

The Model 724 is a liquid tight Model 721 – The liquid tight frame is one piece of formed metal as shown on the right photo. A typical frame with a bolt on bottom pan is shown on the left. Note: Photos are shown with the bottom side up.



Uptime Express – 3-5 day widths are shaded in blue.

Belt Width:	6"	8"	12"	18"	24"	30"	36"
Frame Width:	10"	12"	16"	22"	28"	34"	40"



MODEL 721 & 724 Standard Duty Scrap Conveyor



Standard Specifications

Widths: 6", 8", 12", 18", 24", 30" and 36"
(Custom Widths Available)

Lengths: Per Application

Standard Speed: 30 FPM

Standard Motor: 1/2 HP 230/460/3/60 TEFC

Standard Drive: Top Mount, Right Side

Frame: 8-1/2" Deep x Formed 12 Gauge

Drive Shaft: 1-7/16" diameter

Bearings: Grease Sealed

Sprockets: 6 Tooth x 5" Pitch Diameter

Belt: 2-1/2" Pitch Hinged Steel Belt with 1-3/8" high cleats on 12-1/2" Centers, 1.5" high side wings, 1.5" Diameter Rollers (Flanged Rollers are available), Outside Sidebars are required on belts greater than 18", but also optional for smaller widths.

Hinged Steel Belt Comparison Chart

Hinged Steel Belt Conveyors – Chip and Scrap Hinged Steel Belt Conveyors — Hinged Steel Belts are designed to carry hot & oily metal parts or scrap. When determining which hinged steel belt model fits your application, pay special attention to the unit's **frame depth and cleat height**. A deeper frame adds the strength needed for longer runs and heavier loads. Deeper frames also provide the room for taller cleats. A taller cleat will move more product than a shorter one. A taller cleat may also be required for steeper inclines (For example, a 1-1/2" high cleat will carry more load up a 60 degree incline than a 5/8" high cleat.) Other unit's lower profile frames are designed to fit into tight spaces.

MODEL	DESCRIPTION	FRAME GAUGE	FRAME DEPTH	DRIVER SIZE	DRIVER TYPE	DRIVE SHAFT DIA.	IDLER SIZE	IDLER TYPE	IDLER SHAFT DIA.	STANDARD CARRIER	STD. DRIVE	OTHER
715	Light duty – 1-1/2" pitch chip conveyor	14	4.125"	10 tooth	4.854 pd	1.1875"	1.375" OD	Hub	.75"	14ga aprons, 5/8" cleats on 12" centers	Top	Frame tapers from 4.125" @ infeed to 6-5/8" @ discharge
720	Medium duty chip conveyor	12	8.5"	6 tooth	5" pd	1.6875"	6 tooth	5" pd	1.1875"	12ga aprons, 1-3/8" cleats on 12-1/2" centers	Top	720 – Heavy shaft M721
723	Liquid tight M720											723 – Heavy shaft, liquid tight M721
721	Standard duty scrap conveyor	12	8.5"	6 tooth	5" pd	1.4375"	6 tooth	5" pd	1.1875"	12ga aprons, 1-3/8" cleats on 12-1/2" centers	Top	Entire frame is 8-1/2" deep – Flat top cleats are 1-1/8" high
724	Liquid tight M721											
722	Light duty chip conveyor	12	6.625"	5 tooth	4.25" pd	1.1875"	5 tooth	4.25"	1.1875"	12ga aprons, 7/8" cleats on 12-1/2" centers	Top	Entire frame is 6-5/8" deep – Flat top cleats are 5/8" high
726	Liquid tight M722											
725	Low profile infeed chip conveyor	12	5.375"	5 tooth	4.25 pd	1.1875"	1.75" OD	Hub	.75"	12ga aprons, 7/8" cleats on 12-1/2" centers	Top	Frame tapers from 5-3/8" to 6-5/8" – Flat top cleats are 5/8" high
727	Tapered infeed cold header conveyor	12	6.625"	5 tooth	4.25 pd	1.1875"	5 tooth	4.25"	1.1875"	12ga aprons, 5/8" cleats on 12-1/2" centers	Top	Frame tapers from 6-5/8" to 4-1/8" back to 6-5/8"

Unit Weights (Shipping Weights – lbs.)

Model 721

BELT WIDTHS	4"	6"	8"	12"	18"	24"	30"	36"
LENGTHS								
4'	375	398	422	470	545	607	682	756
8'	551	595	640	730	867	971	1108	1242
12'	763	829	896	1029	1229	1376	1576	1771
16'	939	1026	1114	1289	1551	1740	2002	2257
20'	1115	1223	1332	1549	1873	2104	2428	2743
24'	1327	1457	1588	1848	2235	2509	2896	3272
28'	1503	1654	1806	2108	2557	2873	3322	3758
ADD FOR EACH CURVE	54	62	68	80	98	110	128	146

Conveyor weights include standard drive and supports. Other options, crating etc. are not included.

Model 724

BELT WIDTHS	4"	6"	8"	12"	18"	24"	30"	36"
LENGTHS								
4'	374	401	427	481	564	635	718	805
8'	553	604	654	755	908	1030	1184	1341
12'	768	844	919	1068	1292	1466	1692	1920
16'	947	1047	1146	1342	1636	1861	2158	2456
20'	1126	1250	1373	1616	1980	2256	2624	2992
24'	1341	1490	1638	1929	2364	2692	3132	3571
28'	1520	1693	1865	2203	2708	3087	3598	4107
ADD FOR EACH CURVE	51	58	64	77	97	111	131	150

Conveyor weights include standard drive and supports. Other options, crating etc. are not included.

Skid Dimensions

Model 721 — Note: these are general guidelines for freight rate estimates only. Final dimensions may vary.

BELT WIDTHS	4"	6"	8"	12"	18"	24"	30"	36"
Top Mount Skid Width	16"	18"	20"	24"	30"	36"	42"	48"
Side Mount Skid Width	28"	30"	32"	36"	42"	48"	54"	60"

Skid Length – These units are typically shipped assembled. The skid length is the overall length + 5". Maximum skid length is 27".

Model 724 — Note: these are general guidelines for freight rate estimates only. Final dimensions may vary.

BELT WIDTHS	4"	6"	8"	12"	18"	24"	30"	36"
Top Mount Skid Width	16"	18"	20"	24"	30"	36"	42"	48"
Side Mount Skid Width	28"	30"	32"	36"	42"	48"	54"	60"

Skid Length – These units are typically shipped assembled. The skid length is the overall length + 5". Maximum skid length is 27".