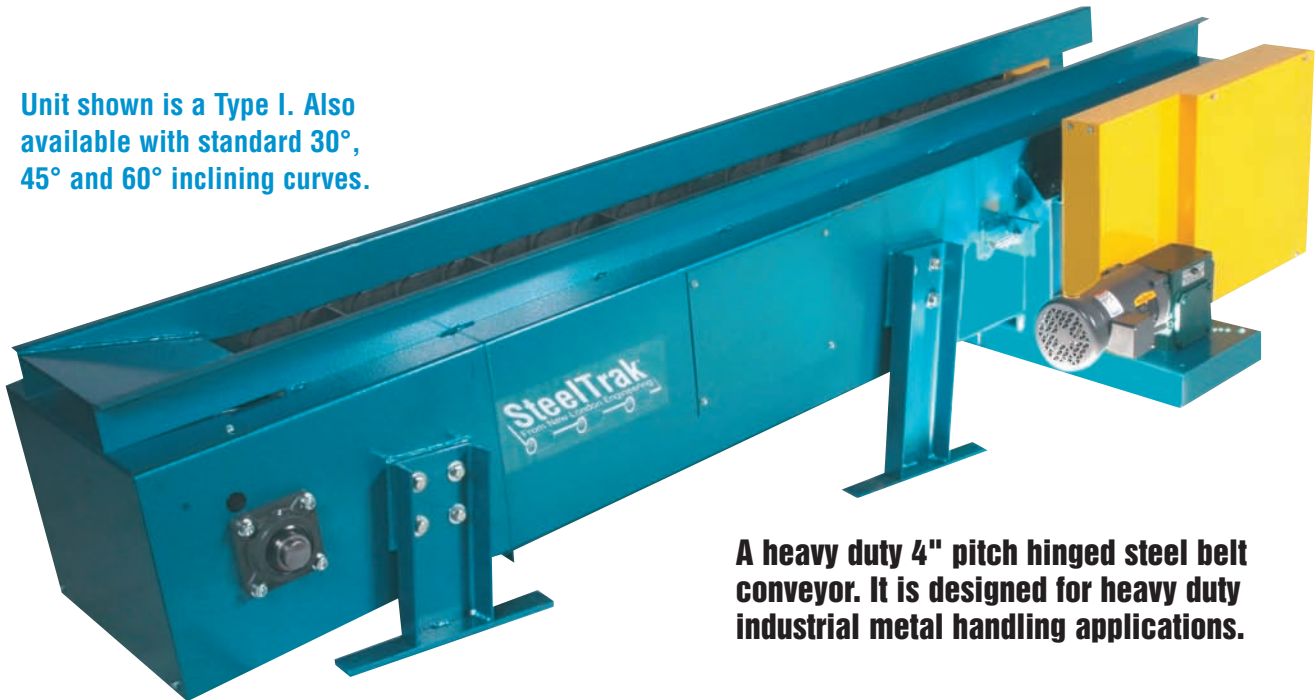


MODEL 750 & 751 4" Pitch Hinged Steel Belt



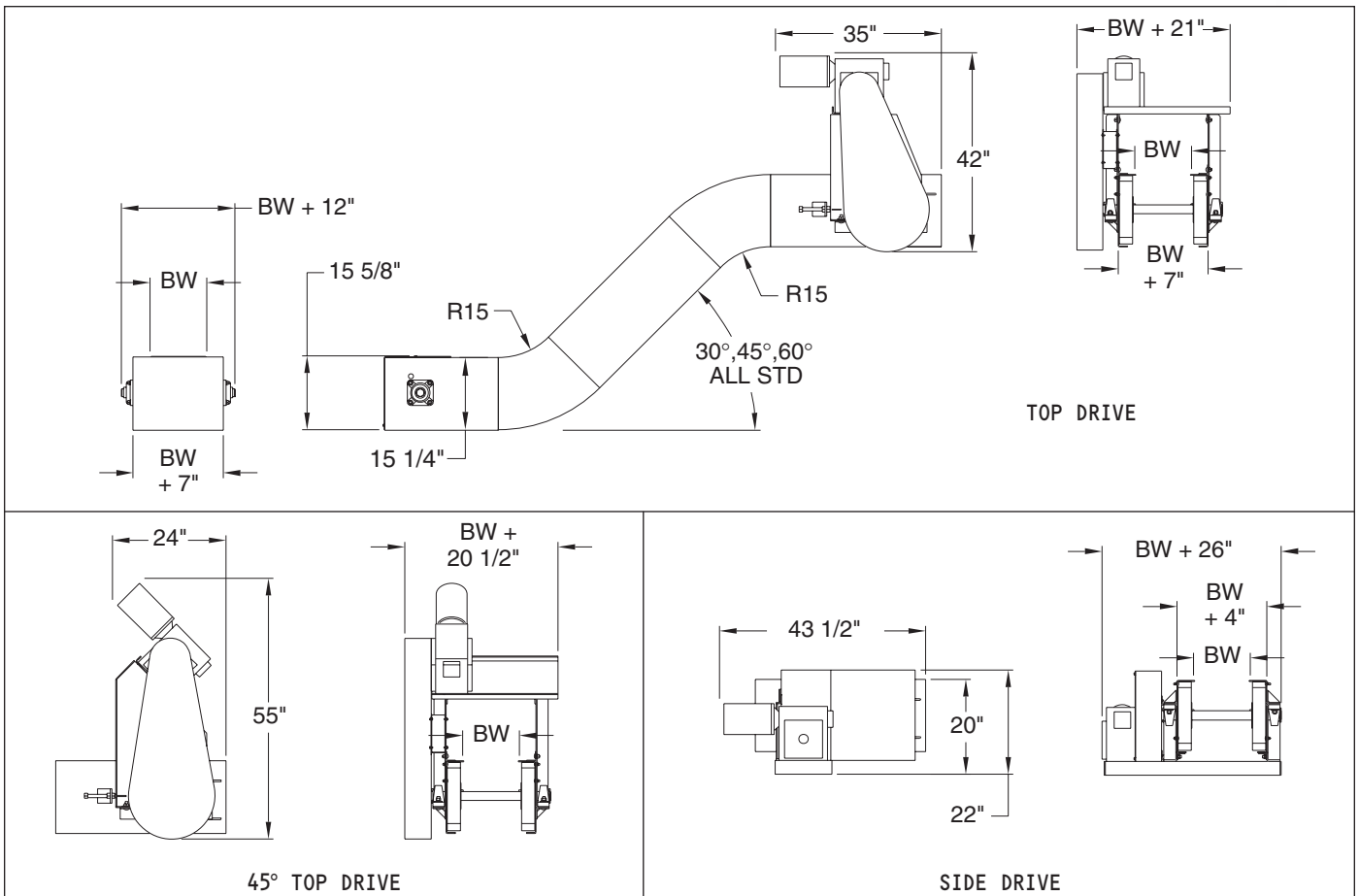
(Model 750 is a heavy drive and infeed shaft M751)

Unit shown is a Type I. Also available with standard 30°, 45° and 60° inclining curves.



A heavy duty 4" pitch hinged steel belt conveyor. It is designed for heavy duty industrial metal handling applications.

Belt Width:	12"	18"	24"	30"	36"	48"	60"
Frame Width:	19"	25"	31"	37"	42"	55"	67"



MODEL 750 & 751 4" Pitch Hinged Steel Belt



Standard Specifications

Widths: 12", 18", 24", 30", 36", 48", and 60"
(Custom Widths Available)

Lengths: Depends on Application

Standard Speed: 30 FPM

Standard Motor: 1/2 HP 230/460/3/60 TEFC

Standard Drive: Top Mount, Right Side

Frame: 15-1/4" Deep x Formed 10 Gauge

Drive Shaft Dia.: (M751 = 1-15/16") (M750 = 2-15/16")

Infeed Shaft Dia.: (M751 = 1-11/16") (M750 = 1-15/16")

Bearings: Grease Sealed

Sprockets: 6 Tooth x 8" Pitch Diameter

Belt: 4" pitch hinged steel belt, one piece apron, with 2-3/8" high cleats on 24" centers, 3" high side wings, 1-3/4" diameter hardened flanged rollers, outside sidebars, 1/2" diameter axle with impact tube.

Hinged Steel Belt Comparison Chart

Hinged Steel Belt Conveyors – Heavy Duty Scrap Hinged Steel Belts — Hinged Steel Belts are designed to carry hot & oily metal parts or scrap.

MODEL	DESCRIPTION	FRAME GAUGE	FRAME DEPTH	DRIVER SIZE	DRIVER TYPE	DRIVE SHAFT DIA.	IDLER SIZE	IDLER TYPE	IDLER SHAFT DIA.	STANDARD CARRIER	STD. DRIVE	OTHER
751 750	4" pitch HSB Hvy drive shaft M751	10 10	15.25" 15.25"	6 tooth 6 tooth	8" pd 8" pd	1.9375" 2.9375"	6 tooth 6 tooth	8" pd 8" pd	1.6875" 1.9375"	7ga aprons, 2-3/8" cleats on 24" centers	Top	M750 Takeup at Infeed M751 Takeup at Drive
760	6" pitch hinged steel belt	Channel	23.25"	6 tooth	12" pd	3.4375"	6 tooth	12" pd	2.9375"	1/4" aprons, 4" cleats on 48" centers	Top	Heavy duty hinged steel belt applications

Unit Weights (Shipping Weights – lbs.)

Model 750

BELT WIDTHS	12"	18"	24"	30"	36"	48"	60"
LENGTHS							
5'	855	952	1050	1147	1245	1458	1671
10'	1294	1460	1627	1793	1960	2341	2723
20'	2247	2553	2861	3168	3476	4200	4925
30'	3200	3646	4095	4543	4992	6059	7127
40'	4153	4739	5329	5918	6508	7918	9329
50'	5106	5832	6563	7293	8024	9777	11531
60'	6059	6925	7797	8668	9540	11636	13733
ADD FOR EACH CURVE	163	191	219	247	275	342	409

Conveyor weights include standard drive and supports.
Other options, crating etc. are not included.

Model 751

BELT WIDTHS	12"	18"	24"	30"	36"	48"	60"
LENGTHS							
5'	845	932	1020	1107	1195	1398	1601
10'	1284	1440	1597	1753	1910	2281	2653
20'	2237	2533	2831	3128	3426	4140	4855
30'	3190	3626	4065	4503	4942	5999	7057
40'	4143	4719	5299	5878	6458	7858	9259
50'	5096	5812	6533	7253	7974	9717	11461
60'	6049	6905	7767	8628	9490	11576	13663
ADD FOR EACH CURVE	163	191	219	247	275	342	409

Conveyor weights include standard drive and supports.
Other options, crating etc. are not included.

Skid Dimensions

CONTACT NLE FOR SKID DIMENSIONS



1700 Division Street • New London, WI 54961
800-437-1994 • 920-982-4030 • fax: 920-982-6800 • www.nleco.com