

MODEL 2000-S Straight Running Horizontal Plastic Belt Conveyors

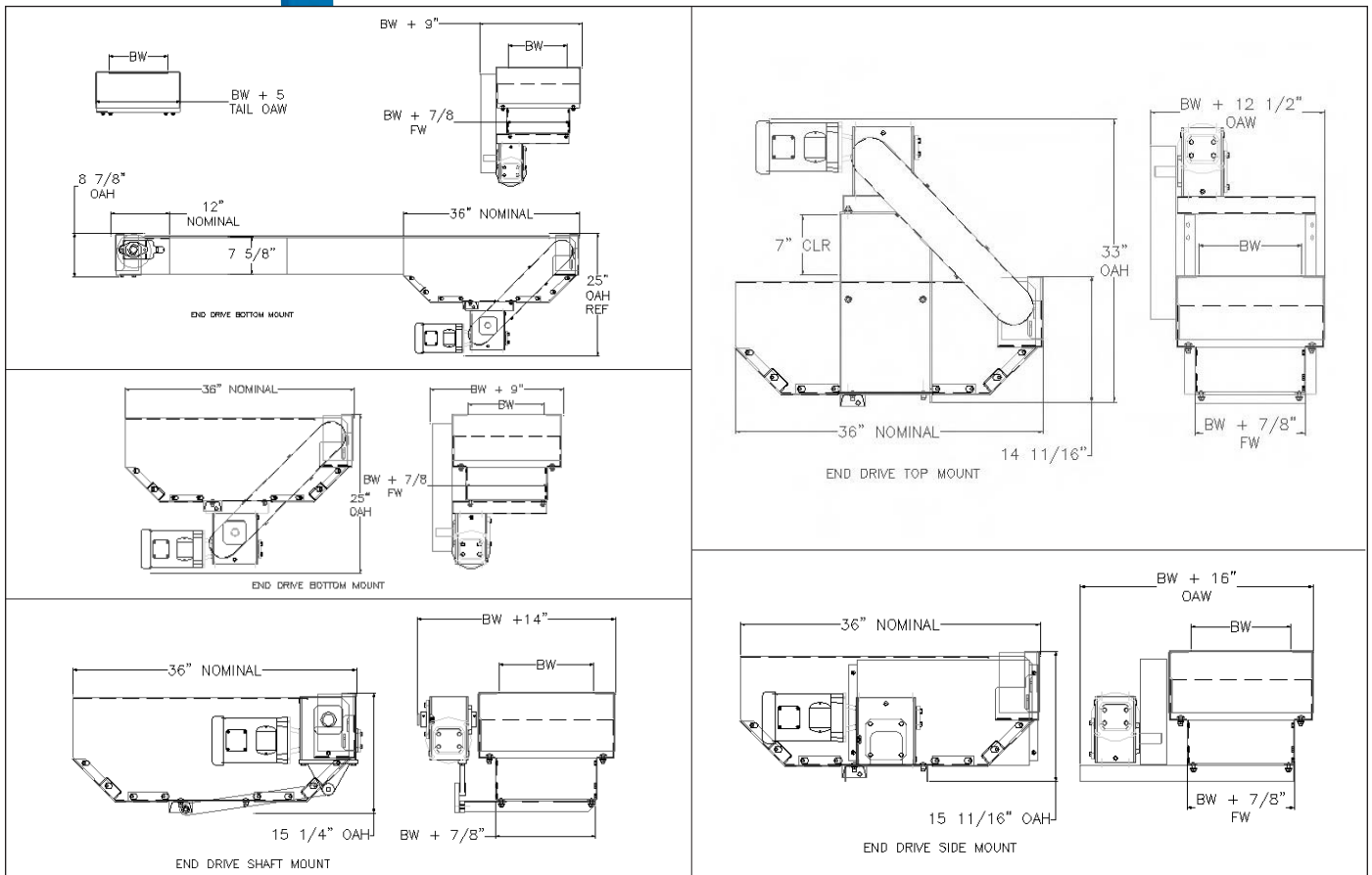
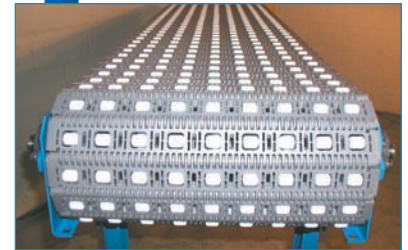
(These pages show the Model 2000-S with belts for straight running accumulation applications)



The Model 2000-S (S=Straight Running) is designed for straight running applications. These pages show the various styles of belts designed for accumulations of products ranging from boxes of candy or laundry detergent to accumulations of irregular shaped products like newspapers or magazines.



This is an end view photo of the 400 Roller Top Accumulation Belt.



For a larger version of a drawing or to print a copy see our website at WWW.NLECO.COM and click on DRAWINGS

Model 2000-S Specifications

Frame: 10 Gauge x 7-5/8" Deep

Frame Width: $BW + 7/8$ "

Frame Spreaders: 10 Gauge Formed Channel

Shafts: 1-1/2" Square Shafts

Return Rollers: 2-1/2" Diameter x 11/16" Hex

Wear Strips: Available in Both Straight and Chevron Style Arrangements


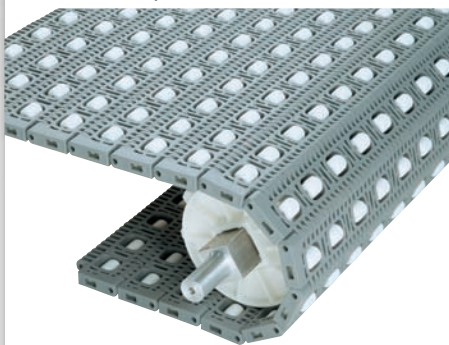
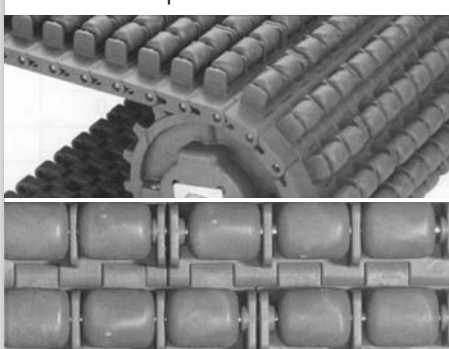
Other: ACT System (Application Change Technology) see page 135

MODEL 2000-S Straight Running Horizontal Plastic Belt Conveyors

Accumulation Belt Options

Model 2000-S Standard Belts for Use in Low Back Pressure Accumulation Applications

Note: Because a flush grid belt has less surface contact, friction is reduced so flush grid belts can be used in slight accumulation applications. If back pressure is not a major concern, consider accumulating on a less expensive flush grid belt. (The standard flush grid belts are the series 900, 1400 and 400 shown with the Model 2000-S economical belt choices).

INTRALOX BELT SERIES	PRIMARY APPLICATIONS	TYPICAL APPLICATIONS AND PRODUCTS
<p>900 Roller Top</p> 	<p>This thin, lightweight belt is equipped with narrow light duty rollers which make it ideal for accumulating medium and light weight products. The 1.07" belt pitch facilitates tight conveyor-to-conveyor transfers and produces low chordal action for smoother operation at higher speeds.</p>	<p>Due to its wide roller spacing, this belt works best with products that have flat, rigid bottom surfaces.</p> <p>Ideal for accumulating light to medium weight boxes filled with gum, candy, tissue paper and unfilled cans or plastic bottles.</p>
<p>400 Roller Top</p> 	<p>This thick and extremely strong belt is built with wide, heavy-duty rollers, which makes it ideal for accumulating large and heavy products.</p> <p>This 2" pitch belt has superior pull strength and added beam strength, which makes it ideal for long, wide conveyor runs.</p>	<p>Due to its wide roller spacing, this belt works best with products that have flat, rigid bottom surfaces. Ideal for accumulating heavy cases or boxes containing items such as filled cans, bottles, plastic containers as well as things like laundry detergent, paper products and automotive products.</p>
<p>1400 Roller Top</p> 	<p>This fairly thick and robust belt is made with wide, heavy-duty rollers that are spaced very close together. This narrow spacing increases the amount of product to roller contact making this belt ideal for accumulating irregular shaped and uneven surfaced products as well as small products with fairly small footprints.</p>	<p>Ideal for accumulating bundled products like newspapers and magazines, bags of snacks and candy and all sorts of shrink-wrapped products.</p>



Roller Top Accumulation Belts – Belt Specifications (*) (**) See Definition Page on page 136

INTRALOX BELT SERIES	PRICE COMPARED TO M2000 BELTS**	PRICE COMPARED TO BELTS IN THIS TABLE** (900-400-1400)**	BELT MATERIAL	BELT PITCH	BELT THICKNESS	ROLLER SPACING ACROSS WIDTH OF BELT	ROLLER SPACING DOWN LENGTH OF BELT	ROLLER DIAMETER	ROLLER WIDTH
900 Roller Top	\$\$\$\$	\$\$\$	PP*	1.07**	3/8"	2"	1.07"	12/16"	4/16"
400 Roller Top	\$\$\$\$	\$	PP*	2**	5/8"	2"	2"	11/16"	13/16"
1400 Roller Top	\$\$\$\$	\$\$\$\$	A*	1**	4/8"	1"	1"	11/16"	13/16"

**See page 136