

MODEL 351 Standard Duty V-Guided Inclining Conveyor

This lightweight shallow frame parts conveyor provides the flexibility to be used in both horizontal and inclined applications. This unit includes a cleated belt and siderails making it the right choice for narrow, shorter run, inclined V-guided applications.



Photo of a V-Guided Belt and Frame



Photo includes an optional flared infeed hopper



Photo showing both the V-guided frame and pulley

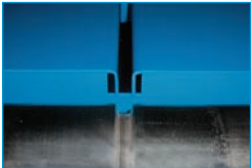
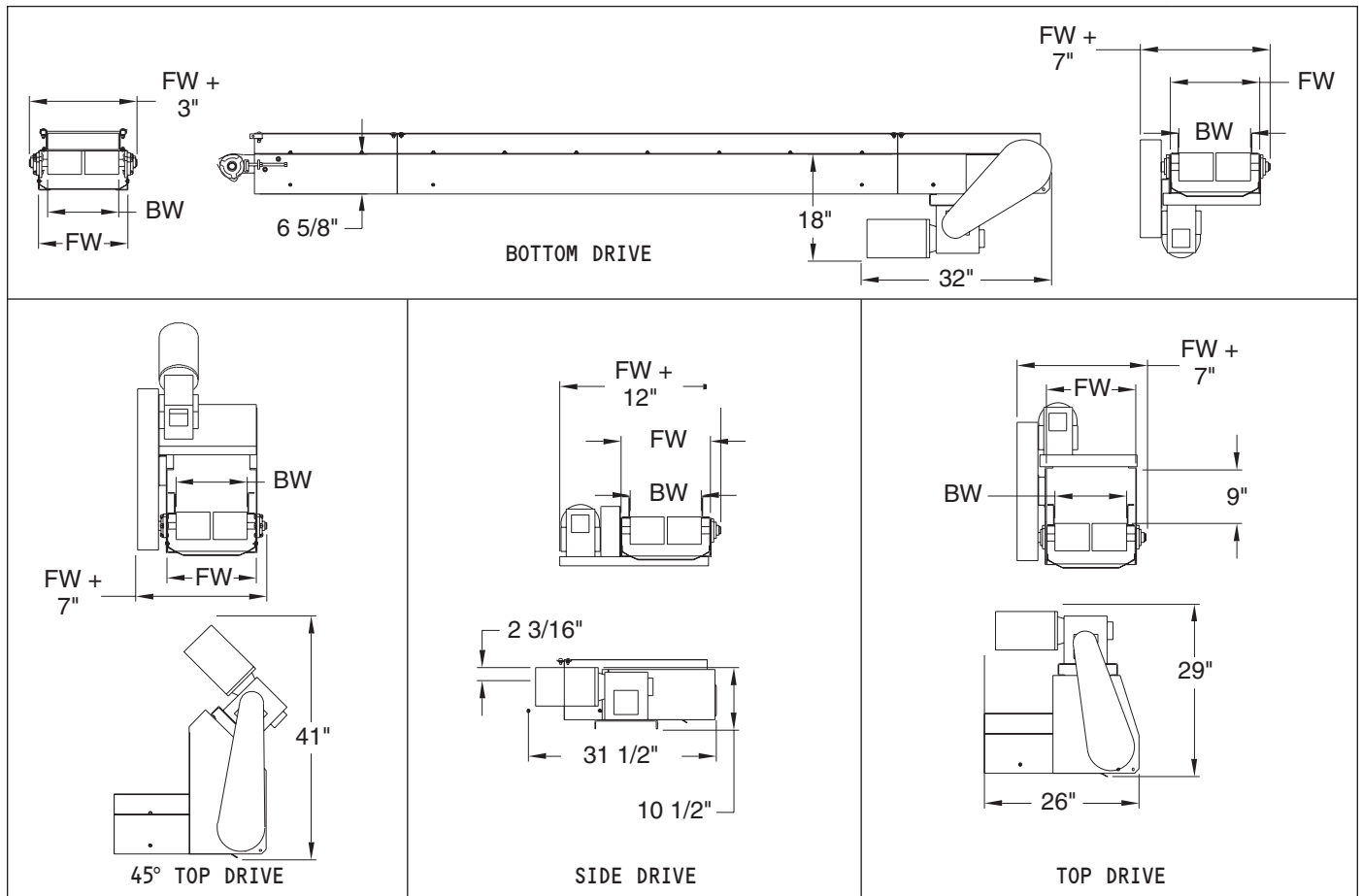


Photo of an "A" section V-Guided Belt



A V-guided system keeps the belt centered for use in side loading and wide applications. They are also necessary when the application is as short as it is wide. Typically V-guides are recommended if the conveyor length is less than 2.5 times the belt width.

Belt Width:	4"	8"	12"	18"	24"	30"
Frame Width:	7"	11"	15"	21-1/2"	28"	34"



MODEL 351 Standard Duty V-Guided Inclining Conveyor

Standard Specifications

Widths: 4" – 24"

Lengths: Up to 20' (6" Increments)
Standard Length is 4', Two Piece Bolt Together

Standard Speed: 60 FPM

Standard Motor: 1/3 HP 230/460/3/60 TEFC

Standard Drive: Top Mount, Right Side

Standard Belt: Black PVC 120 with 1-1/2" High Cleats on 12" Centers, Clipper Lacing

Drive Pulley: 4" Dia Flat Face Rubber Lagged x 1-3/16" A Section "V" Guided

Infeed Pulley: 4" Dia Crown Face Take Up x 1-3/16" A Section "V" Guided

Infeed Frame: 6-5/8" Deep x 12 Gauge

Others: Base unit includes 3-1/2" High Side Rails and a Bottom Pan. Infeed Hoppers are Optional.

Inclined Conveyors – Horizontal Inclined Units Comparison Chart

Inclined Conveyors – Horizontal Inclined Units — These units use cleated belts to carry loose, unpacked items like plastic parts, nuts & bolts and stampings up inclines

MODEL	DESCRIPTION	FRAME GAUGE	FRAME DEPTH	DRIVE PULLEY SIZE	DRIVE PULLEY TYPE*	DRIVE PULLEY SHAFT DIA.	INFEED PULLEY SIZE	INFEED PULLEY TYPE*	INFEED PULLEY SHAFT DIA.	STANDARD BELT	STD. DRIVE*	OTHER
150	Standard duty low profile inclining conveyor	12	1.75" + cleat height	2.875"	CF knurled pulley	.75"	1.3125"	FF pulley	.5"	2 ply black PVC 70	Bottom	Note: Frame depth changes with cleat height
500	Standard duty inclining conveyor	12	6.625"	4.625"	CFRL pulley	1.1875"	4"	CF pulley	1.1875"	2 ply black PVC 120 with 1-1/2" cleats on 12" centers	Top	Unit includes 1-1/2" or 3/12" rails and a bottom pan
505	Medium duty inclining conveyor	10	13"	8.625"	CFRL pulley	1.4375"	8"	CF pulley	1.4375"	2 ply black PVC 120 with 3" cleats on 12" centers	Top	Unit includes 6" high siderails
506	Heavy duty inclining conveyor	10	13"	8.625"	CFRL pulley	1.6875"	8"	CF pulley	1.4375"	2 ply black PVC 120 with 3" cleats on 12" centers	Top	Heavy drive shaft M505
351	Standard duty V-guided inclining conveyor	12	6.625"	4.625"	FFRL "A" section	1.1875"	4"	FF "A" section	1.1875"	2 ply black PVC 120 with 1-1/2" cleats on 12" centers "A" section	Top	V-guided M500

*BM = Bottom Mount; CF = Crown Faced; CDBM = Center Drive Bottom Mount; CH = Channel; FF = Flat Faced; RL = Rubber Lagged; RA = Right Angle; Std = Standard

Unit Weights (Shipping Weights – lbs.)

BELT WIDTHS	4"	8"	12"	18"	24"	30"
LENGTHS						
4'	249	272	305	338	369	400
8'	302	327	379	431	482	533
12'	390	418	490	562	634	706
16'	443	473	564	655	747	839
20'	531	564	675	786	899	1012
24'	584	619	749	879	1012	1145
28'	672	710	860	1010	1164	1318

Conveyor weights include standard drive, supports and 3-1/2" high siderails.

Skid Dimensions

Model 351 — Note: these are general guidelines for freight rate estimates only. Final dimensions may vary.

BELT WIDTHS	4"	8"	12"	18"	24"	30"
Bottom, Top & Center Mount Skid Width	15"	19"	23"	29"	35"	41"
Shaft and Side Mount Skid Width	20"	24"	28"	34"	40"	46"

Skid Length – These units are typically shipped assembled. The skid length is the overall length + 12". Maximum skid length is 27'.