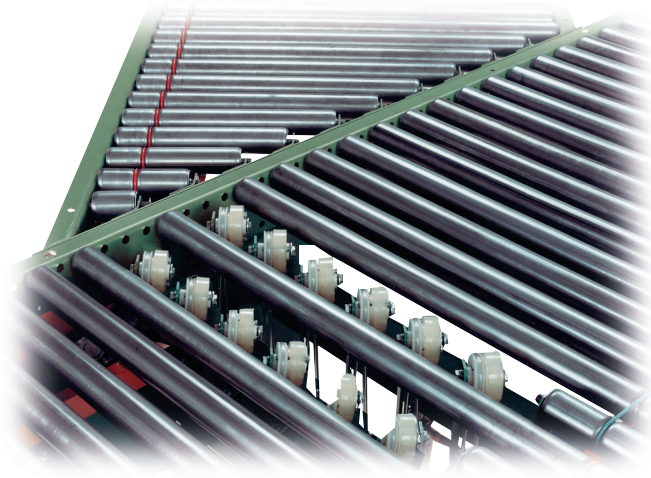
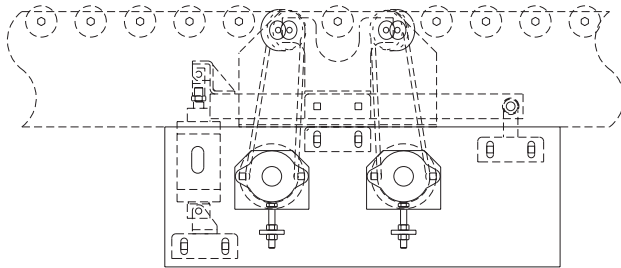
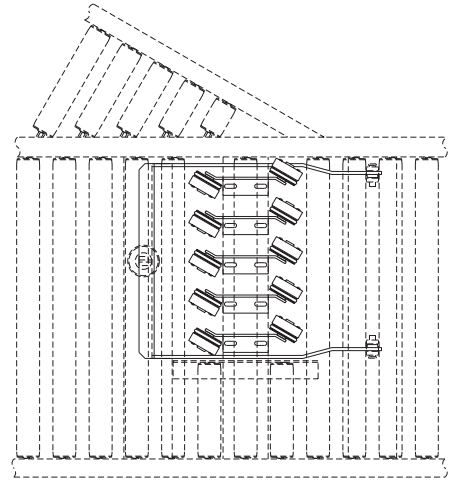


# MODEL SD60 SKEWED WHEEL DIVERTER



Shown mounted in optional conveyor



## SPECIFICATIONS

**BELTS:** 1/4" dia. round polyurethane.

**DRIVE WHEELS:** 2-1/2" O.D. x 3/4" face polyurethane, quantity as required, driven by 1/4" dia. polyurethane belts.

**DRIVE SHAFT:** 1-3/16" dia.

**AIR CYLINDER:** Double action.

**AIR CONTROLS:** Single solenoid valve. (60-80) PSI required

**FRAME ASSEMBLY:** Designed to mount into 196LR, 796CALR and 196LS line shaft driven conveyor.

**DIVERSION ANGLE:** 30°, 45° and 90°. Guard rails on take-away spur conveyor may be required at various angles.

**RATE:** Up to 60 sorts per minute.

**BEARINGS:** Heavy duty, lubricated, ball bearing units with cast iron housings.

**SPEED:** 60-180 FPM, constant. Other speeds available. Consult factory.

**MOTOR DRIVE:** 1/2 HP, 230/460/3, 60 cycle, ODP right angle gear motor.

**CAPACITY:** 50 lbs. per ft.; maximum unit load not to exceed 150 lbs.

## OPTIONAL EQUIPMENT

**SPEED:** Unit speed may be increased from 120 to 250 FPM, constant speed (specify).

**MOTORS:** Available in TEFC, explosion proof, dirty duty, 115/230/1, 575/3, etc.

**SLAVE DRIVEN:** Driven by drive shaft on 196LS line shaft conveyor or by return direction of belt on belt driven live roller conveyor. Consult factory.

**ELECTRICAL CONTROLS:** Designed per application. Consult factory.



■ 4 week shipment