

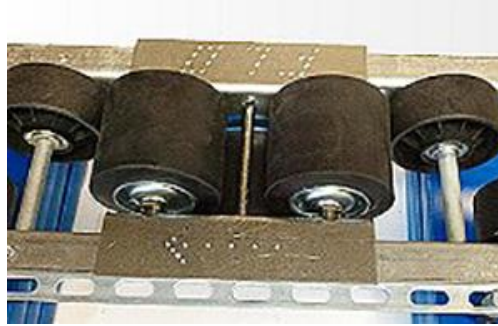


Speed Controllers

Designed for a Variety of Capacities

Mallard's speed controllers are designed to work with a variety of weights and environments. From the smallest container weighing 25# to pallets weighing 3000#, Mallard speed controllers ensure your products safely travel down the lane.

Speed Controller Indirect Mount



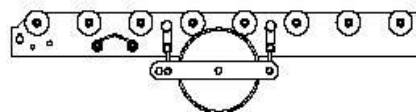
The "indirect" speed controller is designed for lanes using skate wheel or larger polycarbonate wheel tracks. This method allows for a typical load weight variance in the lane of approximately 1,500#.

Speed Controller Under Mount

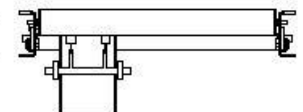


Pallet flow racking speed controllers can also be mounted "indirectly" under full width roller conveyor. Adjustable springs allow for tension to be reduced or increased, in order to better control the rate of flow down lane. Speed controllers are tested to 80,000 cycles.

- Model E15, 25#-200# capacity
- Model E35, 175#-2000# capacity
- Model E40, 500#-3000# capacity
- Freezer Packages to -40 degrees



SIDE VIEW
BRAKE ROLLERS



END VIEW