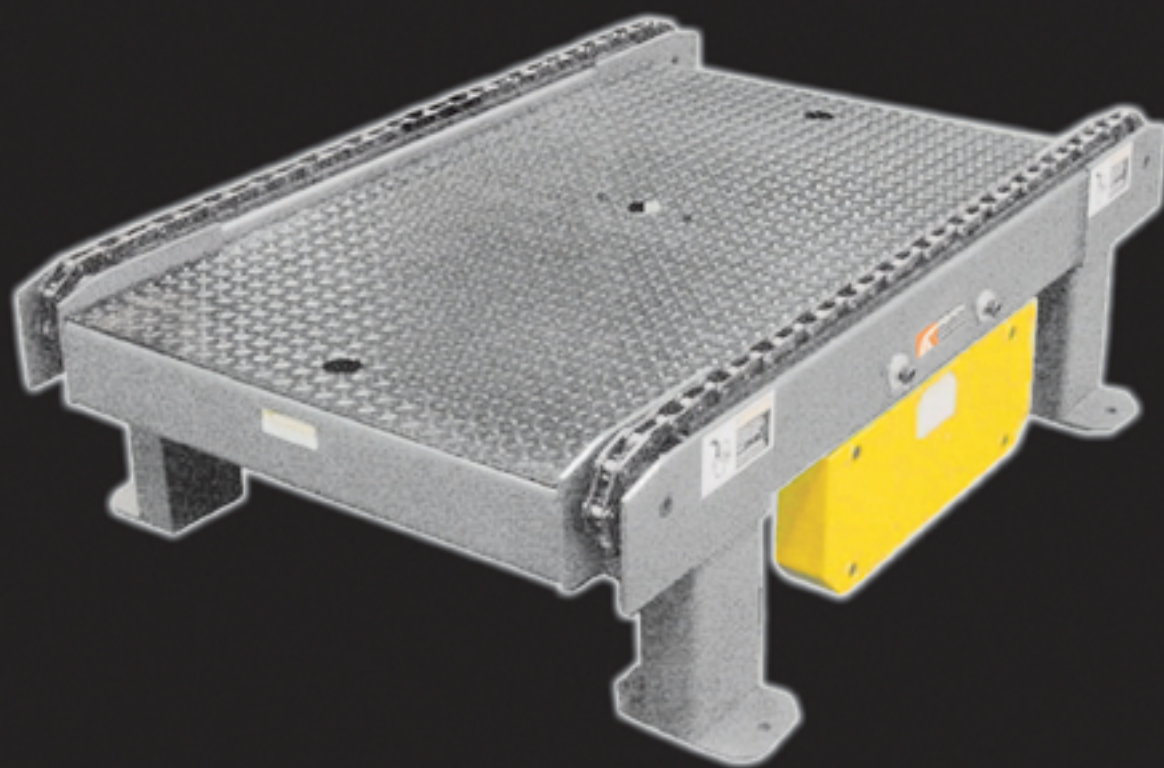


Connect & Convey



Modular Heavy Duty Product Line



From

Roach Conveyors

Building on the strength of many years of material handling equipment manufacturing, Roach Conveyors is introducing, Nationwide, an advanced "Modular" heavy-duty conveyor product. Created for heavy unit loads in a system environment, the modular "Connect and Convey" design is capable of **12,000lb unit load at 12" elevation**. Various "Drop-in" modules allow for endless system configurations while integral controls speed implementation.

Developed for today's heavy unit loads, the "drop-in" Modules can solve many applications, without the need of "long-lead time" special design considerations.

Based around a heavy-duty 2-strand Chain Drag configuration, "Drop-in" modules like:

- Chain Transfers
- Roller Transfers
- Accumulation zones
- Pop-up rotators
- X-Y positioners
- Lift/ Tilt

can be mixed or matched to complete the system.

Additional modular "unit" accessories like Roller or Chain Drag Turn Tables, Transfer Carts, Lifts, and Slave board and Pallet Dispensers/Stackers - Virtually any application can be met.

Roach Conveyors is one of the United States largest manufactures of material handling equipment with more than 100 local distributors, and is committed to providing their customers with superior quality material handling equipment and solutions for their application.

*2-Strand
Drag Chain*

*Tail
Module*

12" Min. Elevation
12,000 lb. Product Load



Connect & Convey

Modular Heavy Duty Product Line

