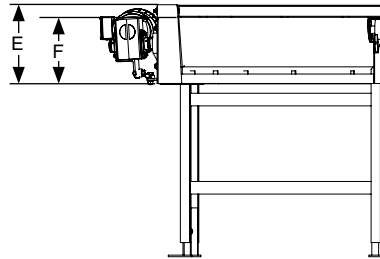
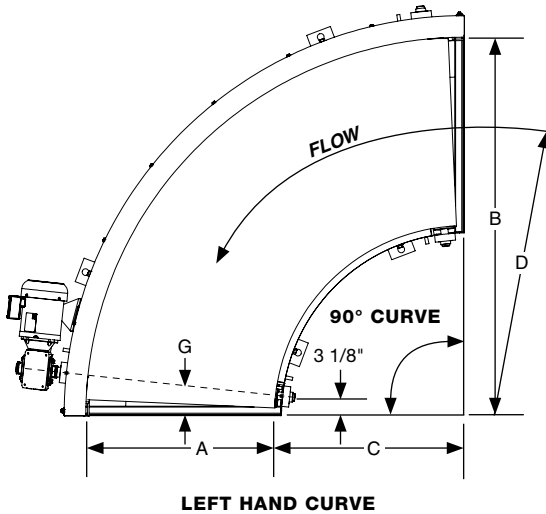


BCCU BELT CONVEYOR CURVE



WHY BCCU?

- Provides the most versatile means of handling a wide variety of products
- 45°, 60°, 90°, 180° and special degree curves in 1° increments
- Achieves higher speeds than other conveyor types
- Many belt options for specific applications
- Precision, low maintenance belt guidance system
- Rigid, welded construction provides smooth conveyance even at higher speeds
- Common applications include assembly, sorting, inspecting and transportation

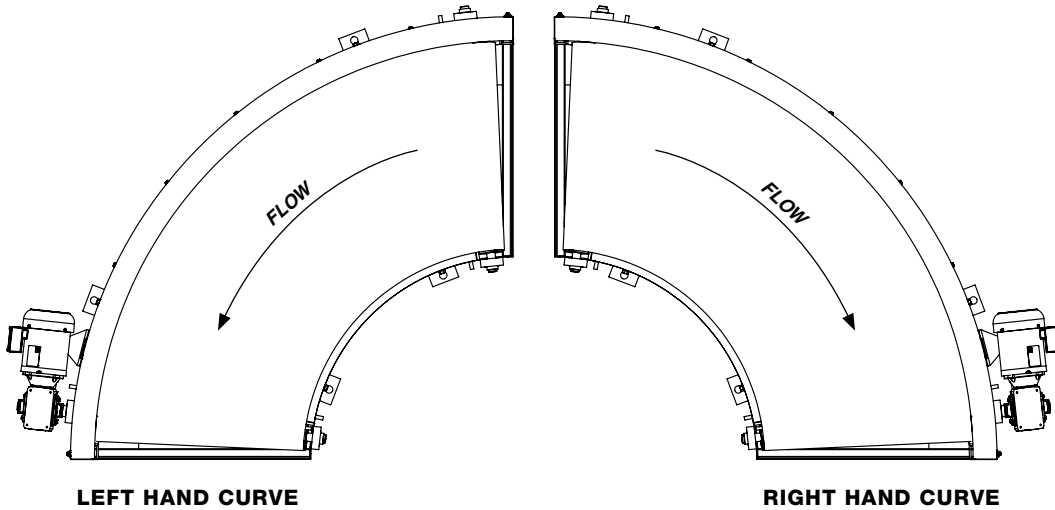


A = Belt Width (BW) (1" Increments)
 B = Outside Radius (OR)
 C = Inside Radius (IR)
 D = Center Line Radius
 E = Frame Height
 F = Bottom of Frame to TOB
 G = Gap

STANDARD CONFIGURATIONS

OUTSIDE RADIUS	BELT WIDTH	INSIDE RADIUS	CENTER LINE RADIUS	FRAME HEIGHT	BOTTOM OF FRAME TO OB	GAP (APPROX.) AT D OR CENTER LINE RADIUS			MAXIMUM DISTRIBUTED LIVE LOAD
						MIN	MAX	NORM	
B (in.)	A (in.)	C (in.)	D (in.)	E (in.)	F (in.)	G (in.)			(lbs.)
36	6	30	33	9 7/16	7 9/16	3 1/8	4 1/8	3 3/8	400
	8	28	32			3	4	3 1/4	
	12	24	30			2 7/8	3 3/4	3 1/8	
48	12	36	42	10 15/16	9 1/16	3 5/8	5 1/8	4	400
	18	30	39			3 1/4	4 3/4	3 5/8	
	20	28	38			3 1/4	4 5/8	3 5/8	
	24	24	36			3	4 3/8	3 3/8	
60	24	36	48	12 3/8	10 9/16	4 1/8	5 7/8	4 9/16	600
	30	30	45			3 7/8	5 7/8	4 3/8	
	36	24	42			3 5/8	5 1/8	4	
72	36	36	54	13 7/8	12	4 1/4	6 5/8	4 7/8	700
	42	30	51			4	6 1/4	4 5/8	
	48	24	48			3 3/4	5 7/8	4 1/4	
87	36	51	69	12 3/4	10 7/8	4 1/4	7 1/4	5	800
	42	45	66			4 1/8	6 7/8	4 7/8	
	48	39	63			3 7/8	6 5/8	4 5/8	
114	42	72	93	12 3/4	10 7/8	4 1/2	7 3/4	6	800
	48	66	90			4 1/8	7 1/4	5 3/4	
	52	62	88			4	7	5 5/8	

DRIVE SPECIFICATIONS



STANDARD SPECIFICATIONS

BELT - Black Trackmate 120 with exposed clipper lacing

GUIDE WHEELS - Precision bearing, nylon wheel

BED FRAME - 10 ga. formed steel slider bed pans welded in 5 1/2" high x 10 ga. formed steel channel frames with welded in end couplers

CONSTRUCTION - Welded frames, spreaders and welded in end couplers

BELT WIDTH - 6" to 52" in 1" increments

CURVE DEGREES - 45°, 60°, 90°, 180° and special degree curves in 1° increments

DRIVE STYLE - Shaft mount end drive

SPEED - Up to 200 FPM

MOTOR - 1/2 HP through 2 HP, 1750 RPM, C-face, 208-230-460V/3PH/60Hz, TEFC

Expanded product parameters available. For more information see Tech Handbook.

REDUCER - Sealed, worm gear, C-face

MOUNTED BEARINGS - Precision, sealed, pre-lubricated, self-aligning, flange mount ball bearing units with cast iron housing

DRIVE PULLEY - Tapered pulley with 1/4" vulcanized lagging

TAIL PULLEY - Tapered pulley

TAKE-UP - Screw type take-up assembly

SUPPORTS - Adjustable H-style, welded 12" to 88" from floor to top of roller. One support at every bed joint and at ends of conveyor. Supports are shipped loose.

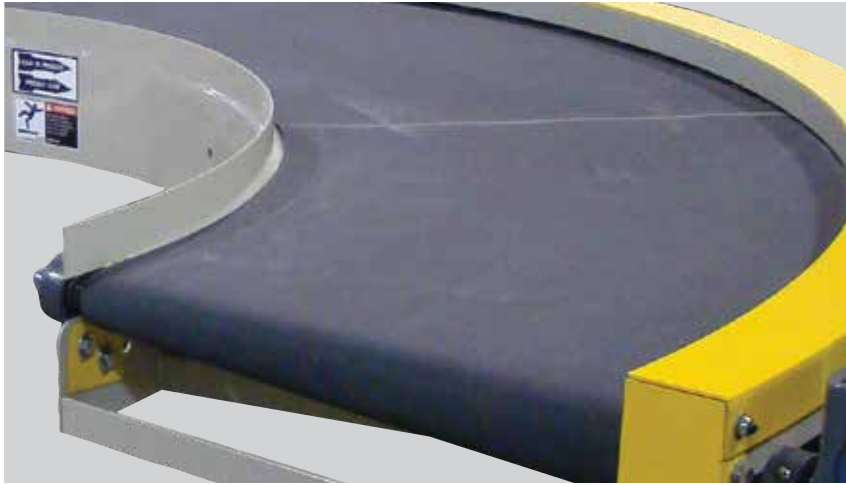
FINISHES - Powder coat finish standard. Wet spray available.

STANDARD BELT SPECIFICATIONS

BELT	BLACK TRACKMATE 120	BLACK TRACKMATE 120 ROUGH TOP	BLACK OMNITHANE 150	WHITE PVC 120
Characteristics	Excellent Tracking	Friction Surface	Cut and Abrasion Resistant	Non-Marking
Cover	Embossed PVC	Rough Top PVC	Smooth Polyurethane	Smooth PVC
Strength	120 PIW	120 PIW	150 PIW	120 PIW
Thickness	.1"	.23"	.16"	.14"
Lacing	Clipper			

Other types available upon request

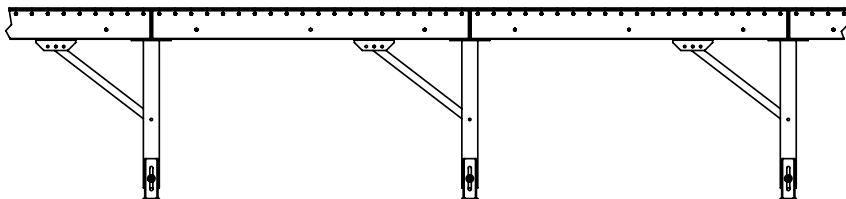
OPTIONAL EQUIPMENT AND DEVICES



FIXED ANGLE SIDE GUIDES
SIDE GUIDES

SIDE GUIDES - Allows product to be guided and kept in place within the conveying surface. Side guides are welded to the conveyor frame.

Fixed Angle Side Guides - 10 ga. rolled, 2" high. Other heights available.

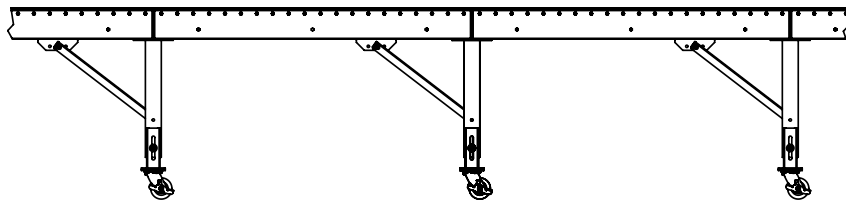


KNEE BRACE SUPPORTS

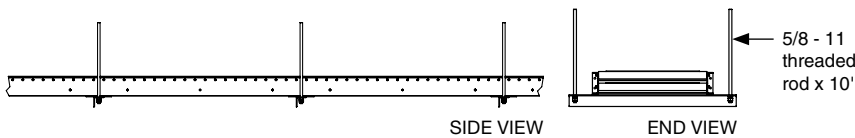
SUPPORTS - Available with caster options for portability. Supports are designed to be bolted to the conveyor frame. Supports are shipped loose.

Knee Brace Supports

Portable H-Stands



PORTABLE H-STANDS
SUPPORTS

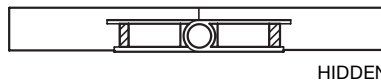


CEILING HANGERS

CEILING HANGERS - Allows conveyor to be suspended from the ceiling. Threaded rod is attached to support steel under the conveyor frame. Ceiling attachments to threaded rod by others.



RECESSED



HIDDEN

BELT LACING

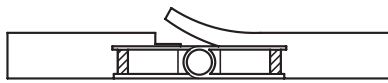
Recessed

Hidden

Flapover

Standard (Exposed)

Other types available



FLAPOVER



STANDARD (EXPOSED)

BELT LACING

STAINLESS STEEL - Conveyors are available in stainless steel materials for washdown applications or harsh environments